

The Austin

BY TODD HOMES LLC

TODD
Homes
llc.com
Affordable Luxury



- One Level Living At It's Finest in this Custom Ranch
- Open Concept, Split Floor Plan
- Beautiful & Durable LVT Flooring in All Shared Living Spaces
- Large, Upscale Kitchen With Granite Countertops, Dining/Food Prep/Serving Island, Soft Close Shaker Cabinetry & Stainless Steel Appliances
- Expansive Great Room Flows Into the Kitchen & Dining Room
- Optional 14ft x 10ft Light Filled Sunroom Adds 140 square feet
- Primary Suite has a Walk-In Closet & Adjoining Spa-Like Bath with a Walk-In Shower, Quartz Topped Vanity, Dual Sinks & Moen Fixtures
- We Offer Many Options So You Can Customize Your Home
- Lower Level with Full Bath Rough-In & Optional Egress

 3
Bedrooms

 2
Bathrooms

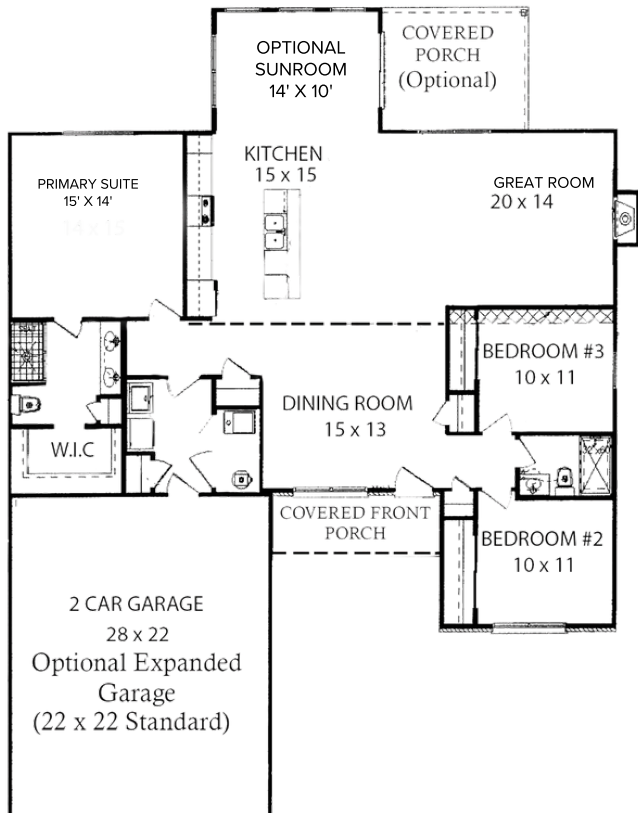
 2
Garage

 1804
Square Feet

The Austin

BY TODD HOMES LLC

TODD
Homes
llc.com
Affordable Luxury



LEARN MORE