



CALIBER HOMES

CHARACTER REDEFINED

521 AERMOTOR

Offered at

\$774,300



THE TRAVIS

PROPERTY FEATURES:



4 Bedroom



3.5 Bathroom



3 Car



2745 Sq Ft



Full Foam Insulation

ABOUT:

"I SHALL NEVER SURRENDER OR RETREAT" -WILLIAM TRAVIS

The Travis floorplan is a popular choice for those who love open-concept living with intentional separation of space. Designed for flexibility and comfort, this plan offers the perfect blend of casual gathering areas and quiet personal retreats — room to grow and entertain.

CONTACT DETAILS:



817-360-0249



sales@caliberhomestx.com



www.caliberhomestx.com

All plans and elevations are subject to change without prior notice. All Caliber Homes floor plans & elevations are copyrighted. Caliber Homes will enforce copyright laws to their fullest extent. All plan numbers are approximations of square footage and may vary with alternate elevations.

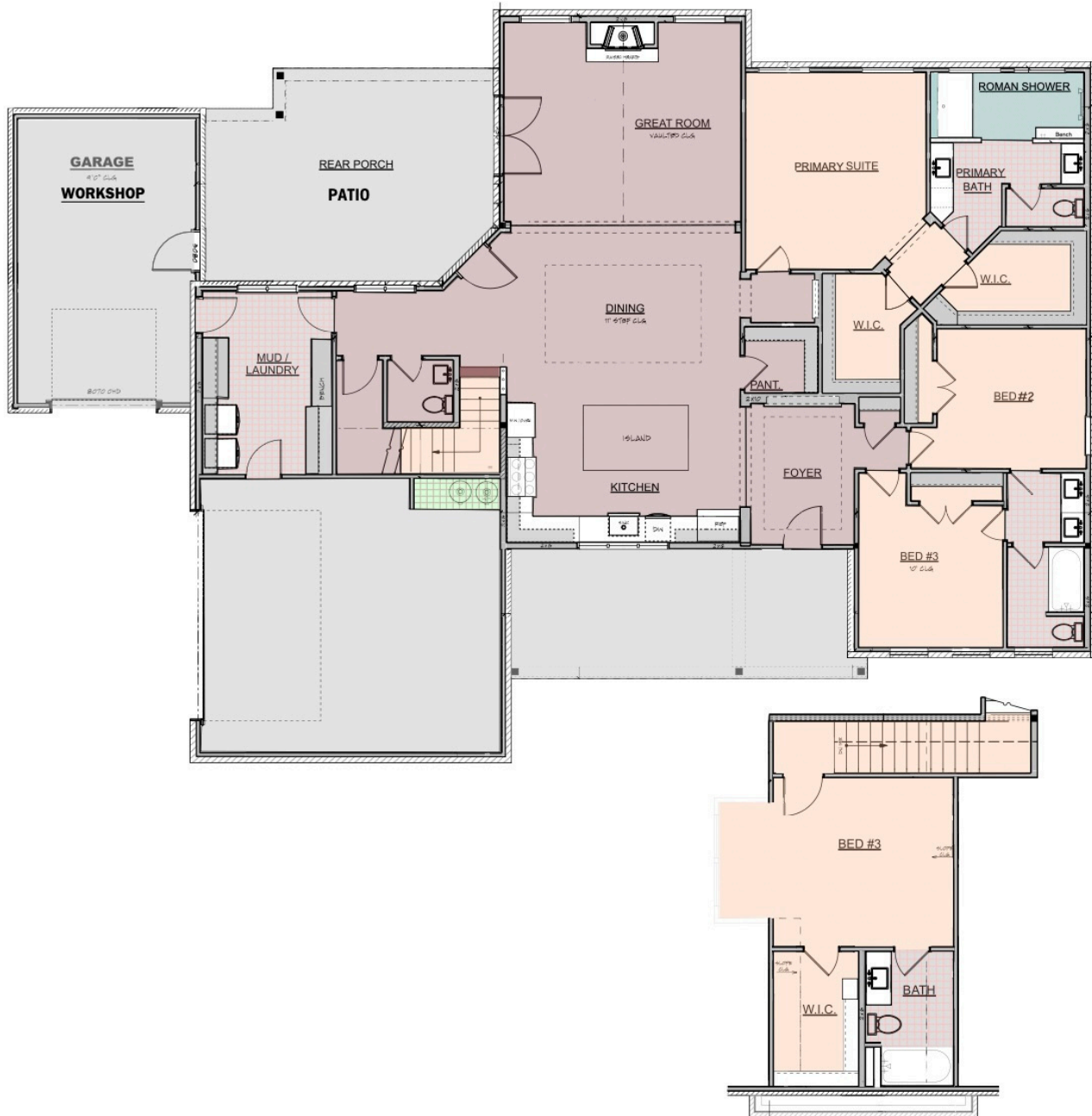
Please note: In an effort to continually improve our floor plans and elevations, Caliber Homes reserves the right to make alterations to the designs without prior notice.



CALIBER HOMES

2745 SQ. FT. THE TRAVIS

CHARACTER REDEFINED



All plans and elevations are subject to change without prior notice. All Caliber Homes floor plans & elevations are copyrighted. Caliber Homes will enforce copyright laws to their fullest extent. All plan numbers are approximations of square footage and may vary with alternate elevations.

Please note: In an effort to continually improve our floor plans and elevations, Caliber Homes reserves the right to make alterations to the designs without prior notice.