



The Cedarwood I



Elevation A

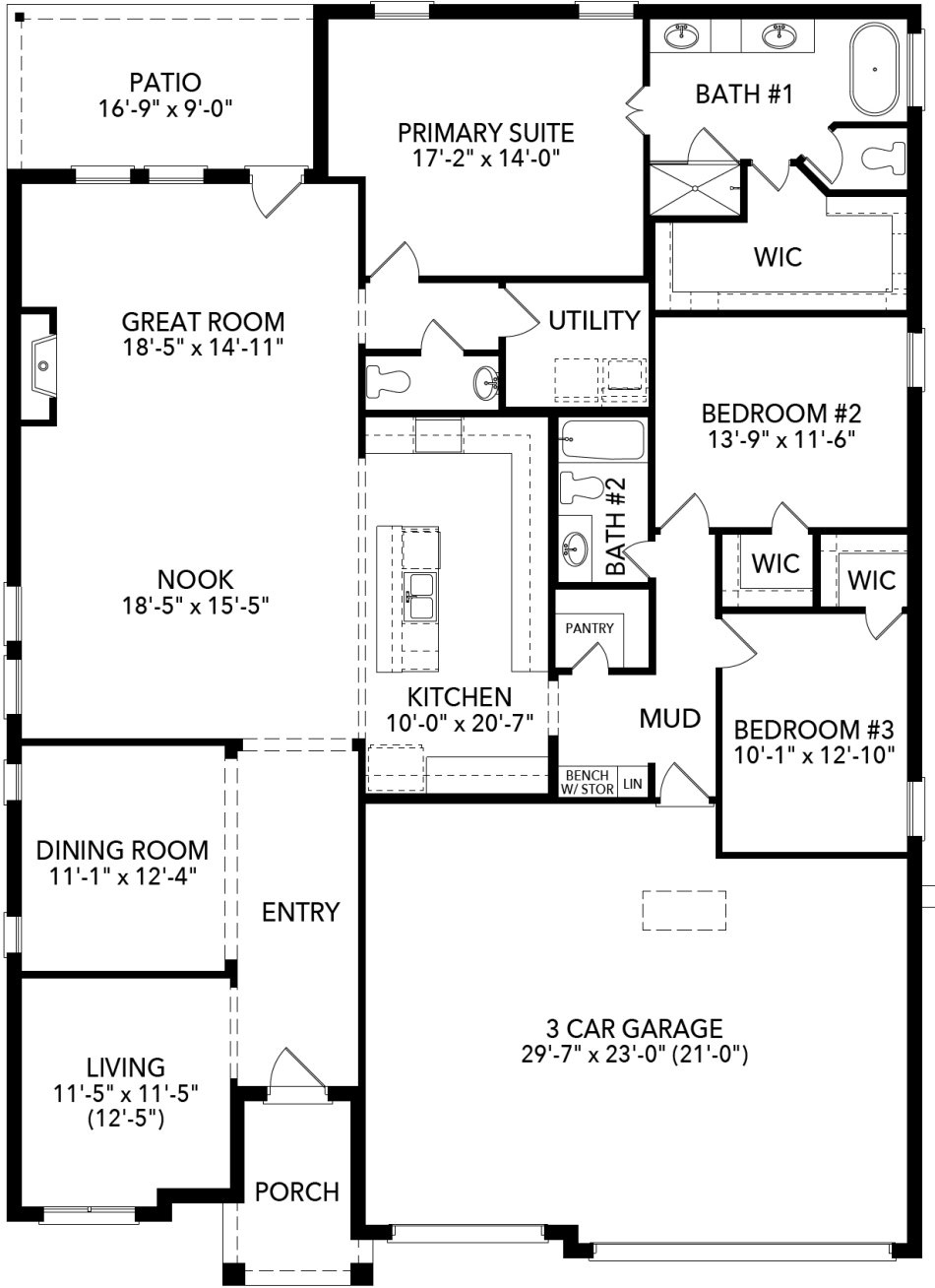
Elevation B



Elevation C

3 Bedrooms | 2.5 Bathrooms | 3-Car Garage | 2466 Sq Ft

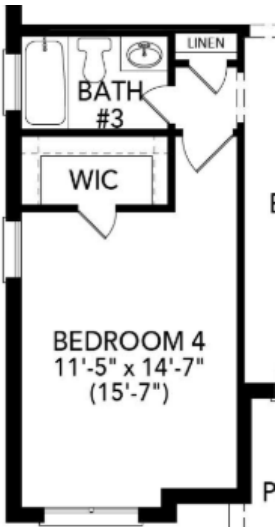
SandlinHomes.com



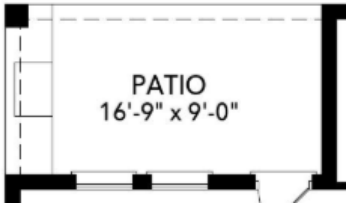
First Floor



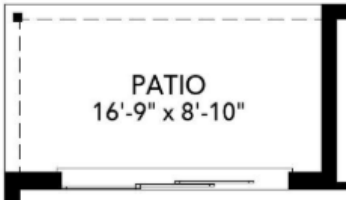
Beamed Ceiling



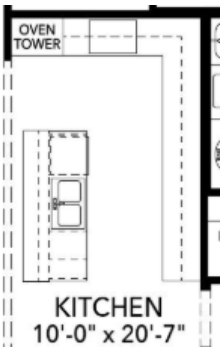
Bed 4 and Bath 3
ILO Living &
Dining



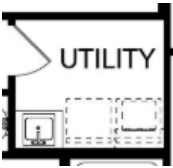
Outdoor Grill



Patio Sliders



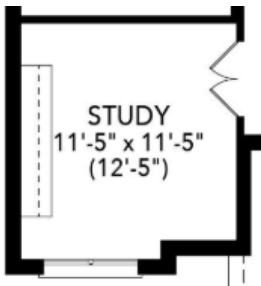
Oven Tower



Utility Sink



Study ILO Living



Study Built-Ins

All discounts and/or incentives are subject to credit approval and use of builder's preferred lender and title company. Floorplans and renderings are artist's conceptions. Dimensions are approximate. Floor plans, room sizes, exteriors, and standard features may vary. Sandlin Homes reserves the right to modify the plan and specifications without notice or obligation. Copyright 2017 Sandlin Homes - All Rights Reserved

