

Fitzgerald



1,464 sq ft



3 bed



2 bath



a

mid-century modern



b

modern



e

craftsman



f

modern

FEATURES YOU'LL LOVE ABOUT THIS HOME

mudroom with bench and closet
creating the perfect drop-zone

walk-in closets in master suite
and in bedroom three

open layout with option to
expand living room

split layout with master suite
opposite of secondary rooms

valuable storage in the kitchen
with a walk-in pantry



IDEAL
homes | neighborhoods®



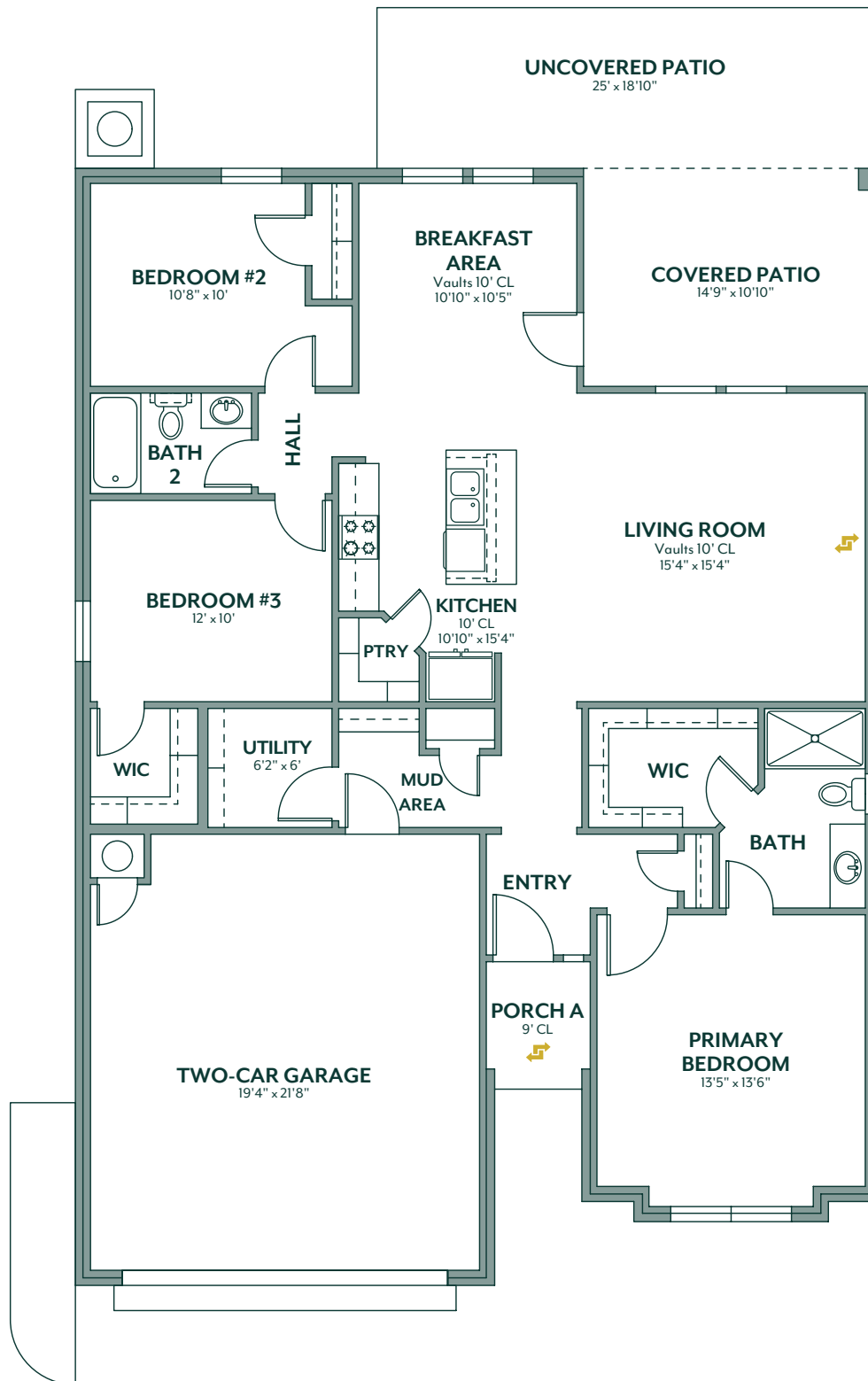
HERE'S HOW WE DEVELOP EVERY IDEAL FLOOR PLAN:

We consider everything ...

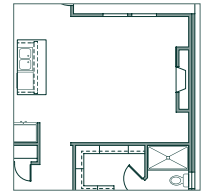
- sight lines & traffic flow
- furniture placement
- usable space
- architectural details
- window placement & size for optimal lighting
- function & low maintenance needs

405.364.1152

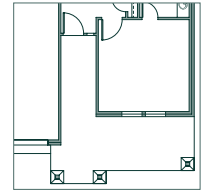
www.idealhomes.com



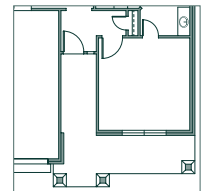
✓ customize this plan



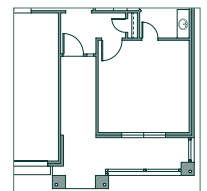
fireplace



porch b



porch e



porch f



Scan the code to view a **photo gallery & included features**
for the Fitzgerald floor plan