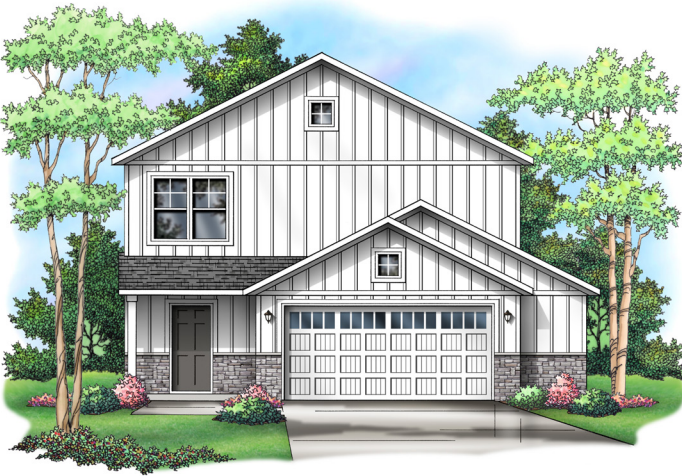


Baxter

LIBERTY SERIES

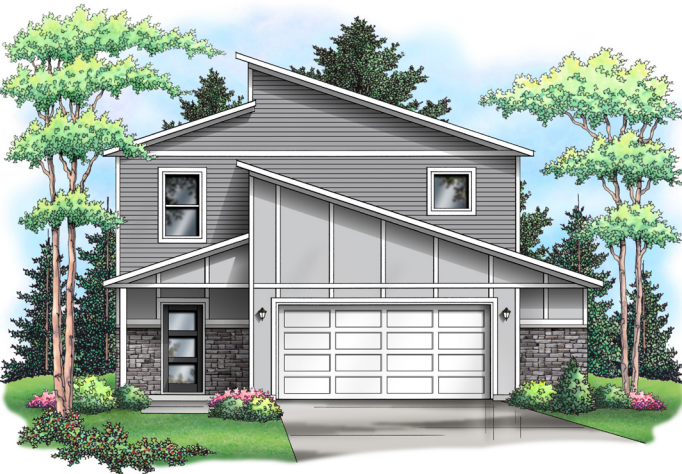
3 BED | 3 BATH | 2.5 STALL GARAGE | 1,776 SQ FT LIVING SPACE



ELEVATION A



ELEVATION B



ELEVATION C

CAPSTONE
— HOMES —

Capstone Homes is a builder whose mission is to build quality homes at an exceptional value, while serving others and impacting the community.

The plan is an artistic rendering only, and should not be interpreted as an exact representation. Some information may differ from actual plans and may be subject to change.

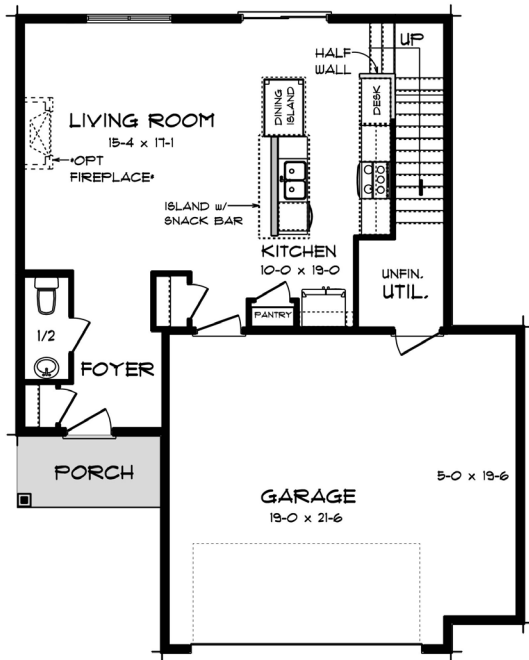
763-427-3090

capstonehomes-mn.com

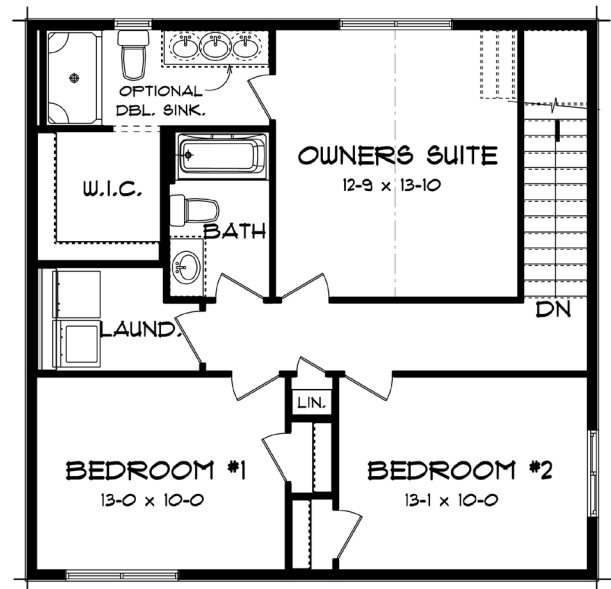
Baxter

FLOOR PLANS

3 BED | 3 BATH | 2.5 STALL GARAGE | 1,776 SQ FT LIVING SPACE



MAIN LEVEL



UPPER LEVEL