

# The Sage Sales Brochure



\*Rendering is an architectural view and may include builder upgrade options.

Handicap accessible floor plans are available by request. Please talk with your agent to find out more.

NOTE: PRICES, SPECIFICATIONS, AND DIMENSIONS ARE APPROXIMATE AND SUBJECT TO CHANGE WITHOUT NOTICE.

DATE:

8/1/2022

SCALE:

NTS

SCALE:

SB-1

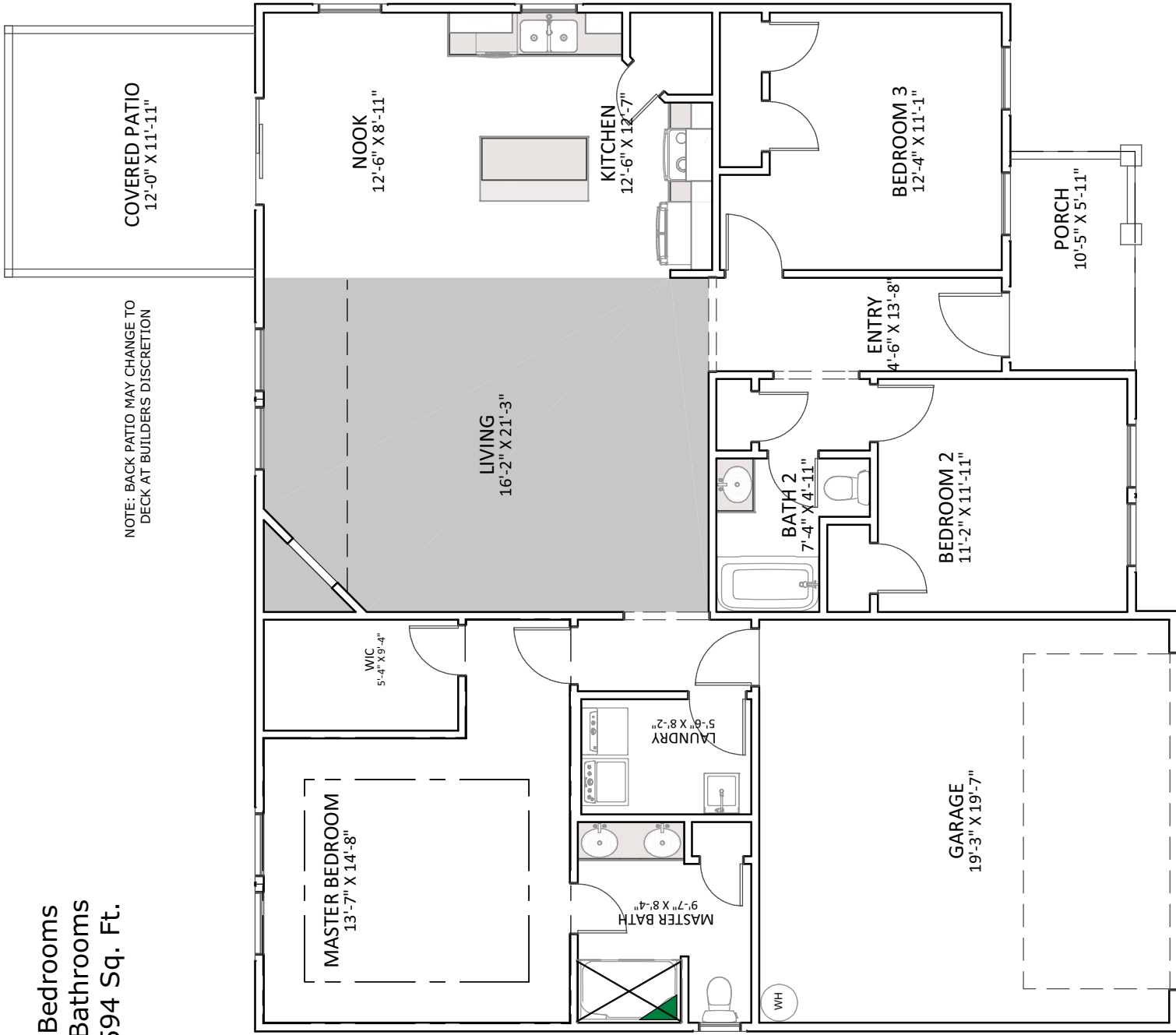
The Sage  
Series 3 - Sales Brochure



Enchanted Homes  
1479 Mt. Lebanon Rd  
Campobello, SC 29322

# The Sage

3 Bedrooms  
2 Bathrooms  
1594 Sq. Ft.



Handicap accessible floor plans are available by request. Please talk with your agent to find out more.

NOTE: PRICES, SPECIFICATIONS, AND DIMENSIONS ARE APPROXIMATE AND SUBJECT TO CHANGE WITHOUT NOTICE.

SB-2

SCALE:

NTS

SCALE:

8/1/2022

DATE:

The Sage

Series 3 - Sales Brochure



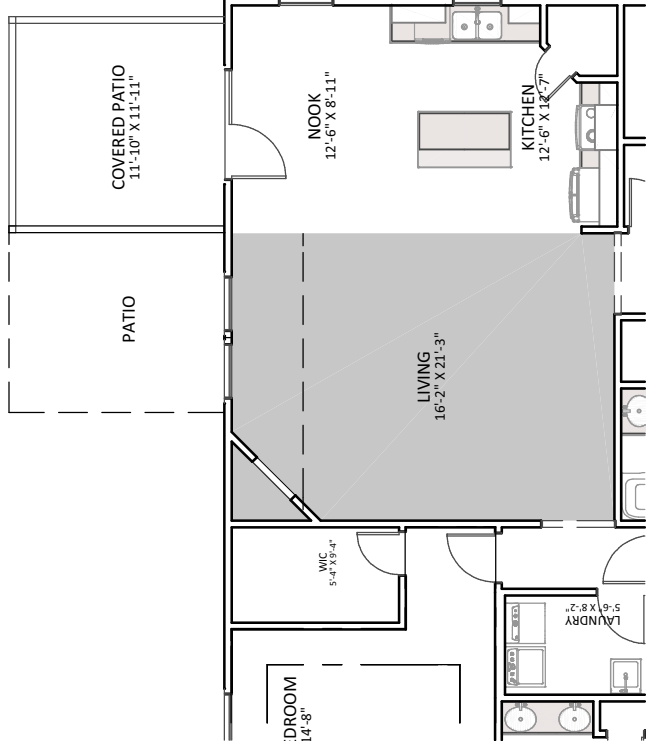
Enchanted  
HOMES

Enchanted Homes  
1479 Mt. Lebanon Rd  
Campobello, SC 29322

# The Sage

With Upgraded Patio

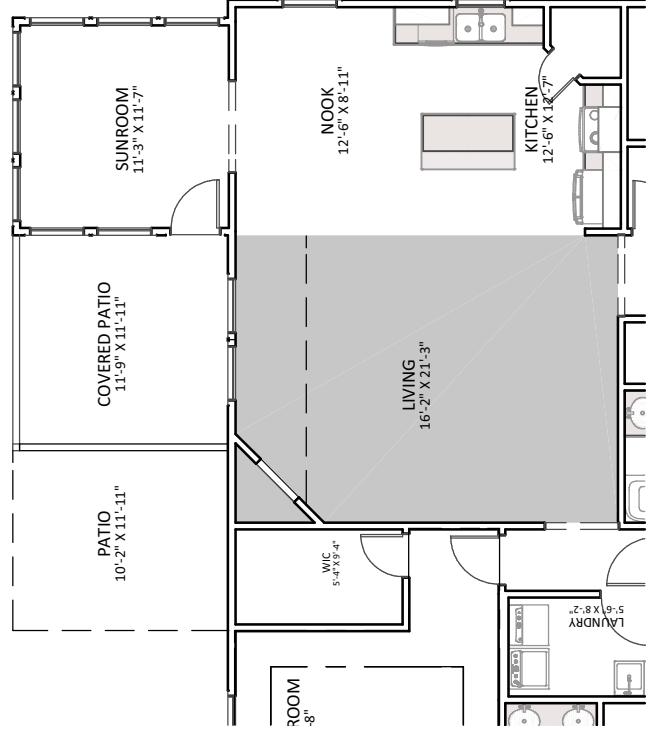
3 Bedrooms - 2 Bathrooms  
1594 Sq. Ft.



# The Sage

With Sunroom & Upgraded Patio

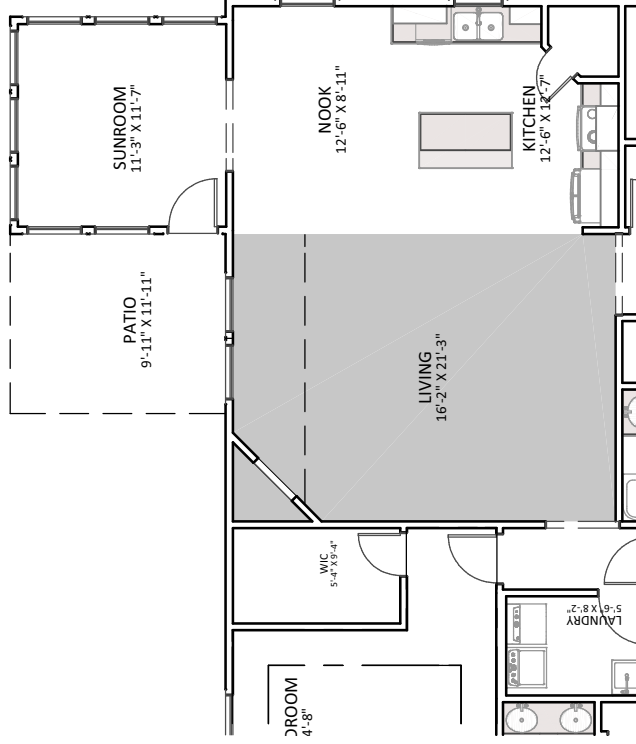
3 Bedrooms - 2 Bathrooms  
1738 Sq. Ft.



# The Sage

With Sunroom

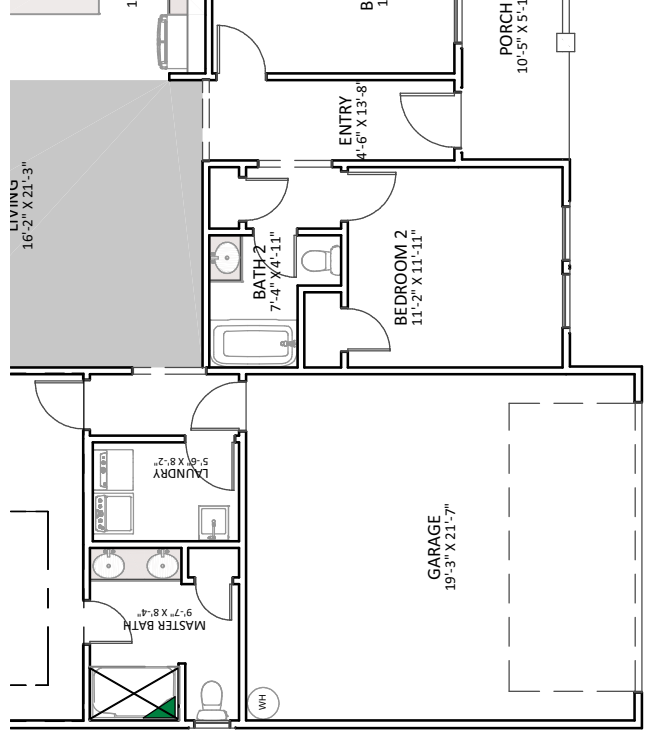
3 Bedrooms - 2 Bathrooms  
1738 Sq. Ft.



# The Sage

Extend Garage

3 Bedrooms - 2 Bathrooms  
1594 Sq. Ft.



Handicap accessible floor plans are available by request. Please talk with your agent to find out more.

NOTE: PRICES, SPECIFICATIONS, AND DIMENSIONS ARE APPROXIMATE AND SUBJECT TO CHANGE WITHOUT NOTICE.

DATE:	8/1/2022
SCALE:	NTS
SCALE:	SB-3

The Sage - Additional Options  
Series 3 - Sales Brochure



Enchanted Homes  
1479 Mt. Lebanon Rd  
Campobello, SC 29322