



Elevation A

The Carlisle

2940 Sq. Ft. | 4 BDRM + Loft 2.5 BA



Elevation B



Elevation C



Elevation D

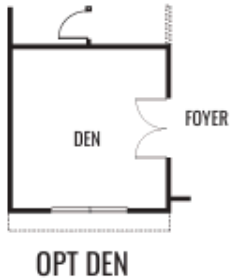
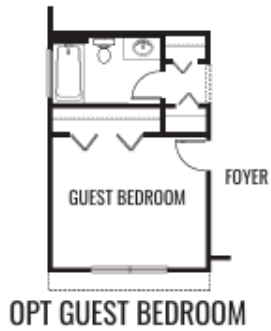
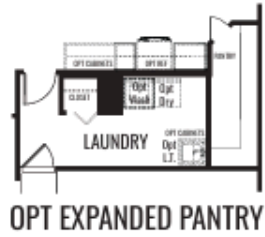
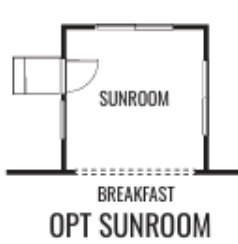


Providence at Farmington Estates

The Carlisle

OPTIONS

FIRST FLOOR OPTIONS



SECOND FLOOR OPTIONS



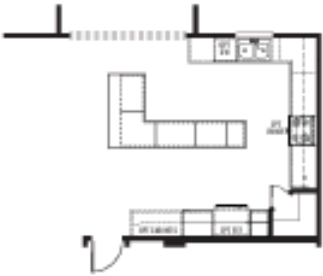
Providence at Farmington Estates

Artist's renderings may vary in precise detail as compared to actual construction. All dimensions are approximate. Providence Real Estate Development, LLC. DBA Providence Homes in an effort to improve its product, reserves the right to make changes without notice. Actual home may be built as shown or reversed as dictated by engineered site plan. © Copyright 2025, Providence Real Estate Development, LLC.

The Carlisle

OPTIONS

KITCHEN ISLAND OPTIONS



OPT. ISLAND 10'6" x 6'
W/ EXTENDED COUNTERTOP
(ONLY W/ SUNROOM OPTION CHOSEN)



OPT. ISLAND 9'
W/ EXTENDED COUNTERTOP



OPT. ISLAND 7'
W/ EXTENDED COUNTERTOP



OPT. DELUXE ISLAND 9'
W/ EXTENDED COUNTERTOP
AND WAINSCOT TRIM



OPT. ISLAND 5'
W/ EXTENDED COUNTERTOP

Providence at Farmington Estates

Artist's renderings may vary in precise detail as compared to actual construction. All dimensions are approximate. Providence Real Estate Development, LLC. DBA Providence Homes in an effort to improve its product, reserves the right to make changes without notice. Actual home may be built as shown or reversed as dictated by engineered site plan. © Copyright 2025, Providence Real Estate Development, LLC.

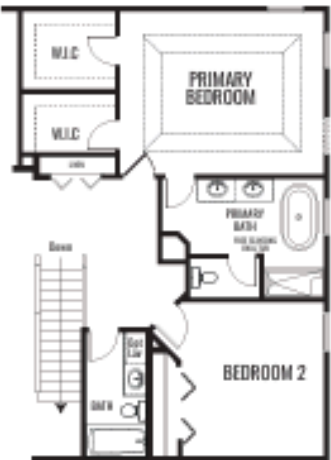
The Carlisle

OPTIONS

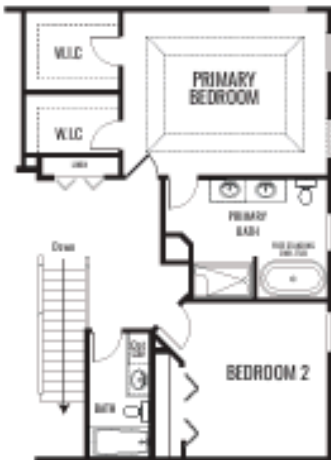
SECOND FLOOR OPTIONS



OPTIONAL SPA BATH



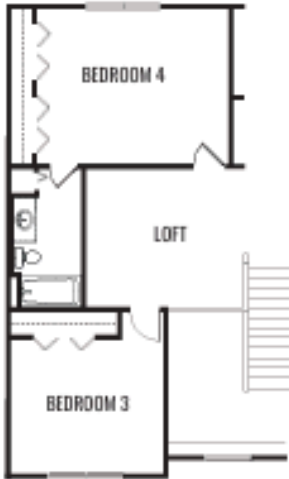
LUXURY PRIMARY BATH
ELEVATION A



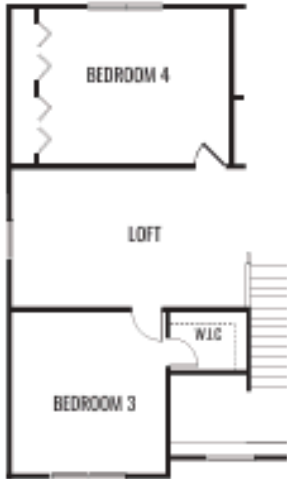
LUXURY PRIMARY BATH
ELEVATION B



OPTIONAL BED 5



OPTIONAL 3rd BATH



OPTIONAL W.I.C. BED 3

Providence at Farmington Estates

Artist's renderings may vary in precise detail as compared to actual construction. All dimensions are approximate. Providence Real Estate Development, LLC. DBA Providence Homes in an effort to improve its product, reserves the right to make changes without notice. Actual home may be built as shown or reversed as dictated by engineered site plan. © Copyright 2025, Providence Real Estate Development, LLC.