



EUROPEAN

THE BIRCH

Introducing this charming two-story townhome - The Birch. With its open concept design and modern amenities, this plan offers comfortable and stylish living spaces. This townhome boasts a well-designed layout that maximizes space and functionality. The open concept kitchen, dining area, and great room create a seamless flow, ideal for both entertaining guests and everyday living. Upstairs features two bedrooms and full bath plus the owner's retreat with a large walk-in closet.

FARMHOUSE



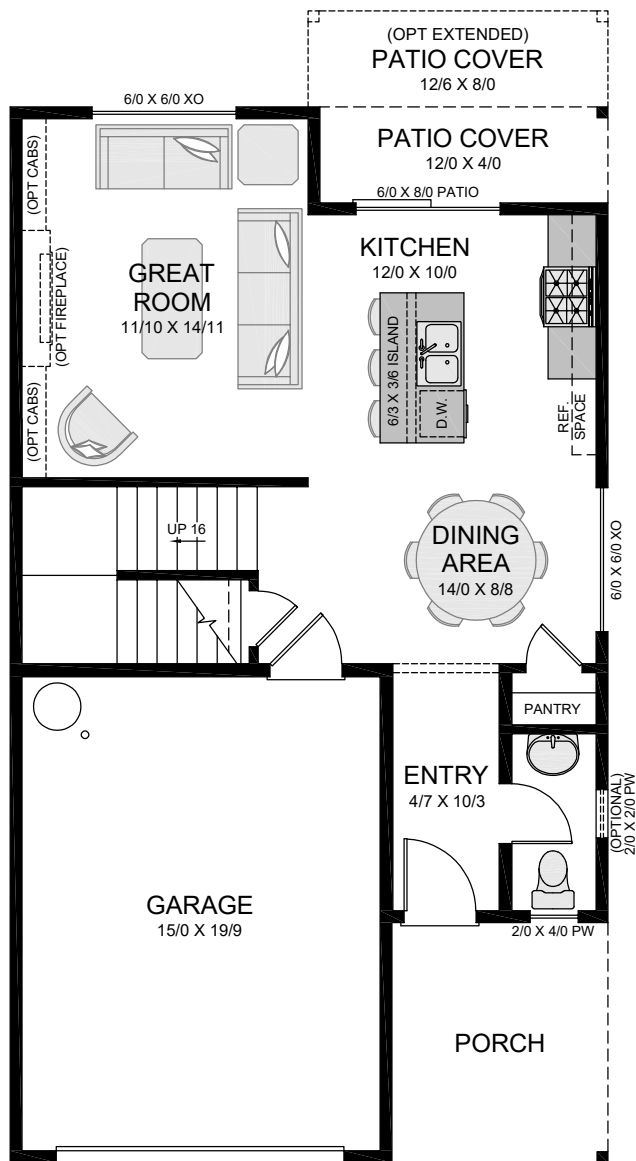
NORTHWEST B



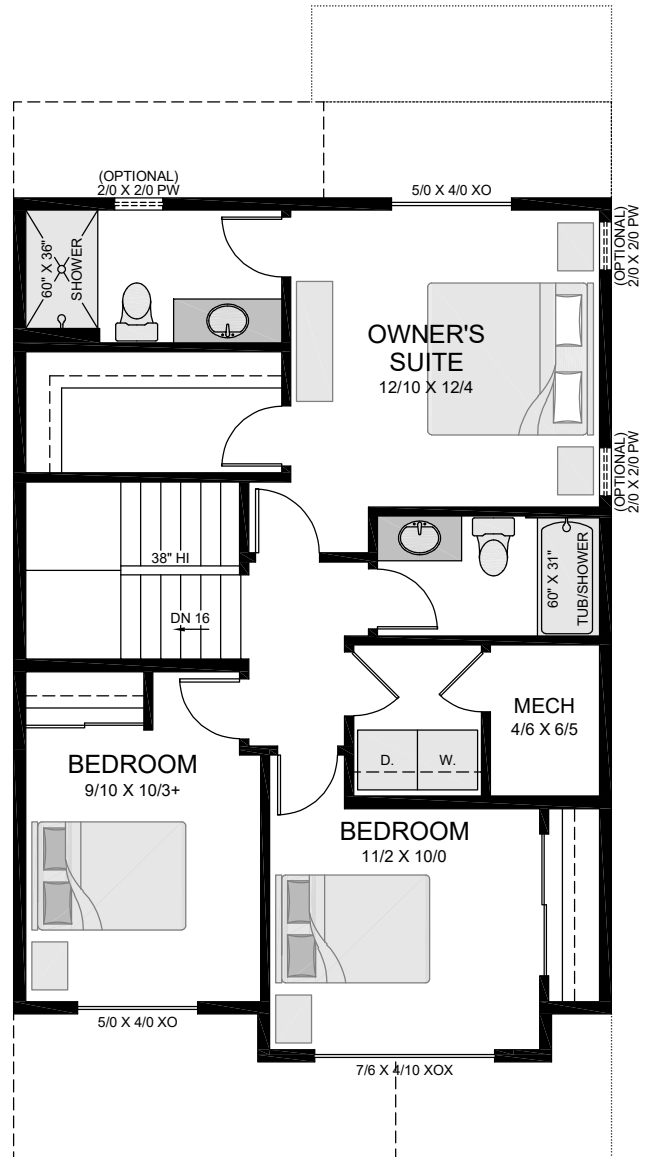
NORTHWEST



THE BIRCH - 1,447 SQ FT



Main Floor



Upper Floor



Elevation renderings are artists' interpretations and may not reflect actual amenities, paint, driveways, landscaping, fencing, etc. Square footage approximate, may change based upon elevation. Prices, promotions, specifications and availability subject to change or prior sale without notice or obligation. Included plan options vary by community and collection. Due to manufacturer and supply constraints, actual building products and materials may vary from photo renderings.



DID YOU KNOW?

All New Tradition Homes are 100% ENERGY STAR® third-party certified for higher energy savings, healthier indoor air and a better built, more comfortable home. Our homes are certified to be up to **15% more energy efficient than a new home** built to meet the Washington State Energy Code.