



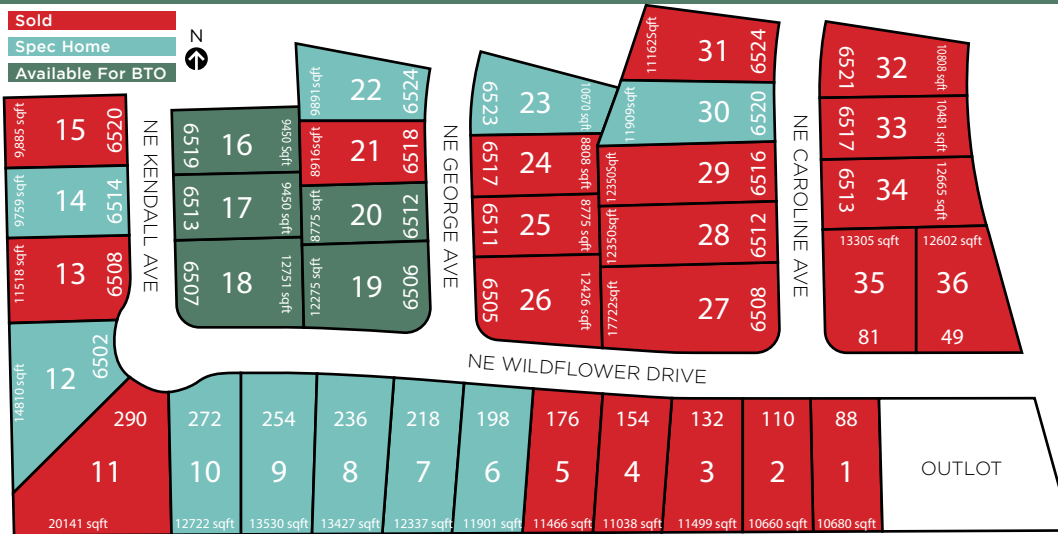
# SUNRISE POINTE

## PLEASANT HILL

## PLAT 6

www.jerryshomes.com

**Sold**  
**Spec Home**  
**Available For BTO**



| LOT # | ADDRESS              | TYPE  | LOT SQFT | PRICE     | STYLE      |
|-------|----------------------|-------|----------|-----------|------------|
| 6     | 198 NE Wildflower Dr | STD/L | 11,901   | \$TBD     | DUKE EXP   |
| 7     | 218 NE Wildflower Dr | STD/L | 12,337   | \$TBD     | COPELAND   |
| 8     | 236 NE Wildflower Dr | STD/L | 13,427   | \$TBD     | CEDAR      |
| 9     | 254 NE Wildflower Dr | STD/L | 13,530   | \$374,990 | CASCADE II |
| 10    | 272 NE Wildflower Dr | STD/L | 12,722   | \$369,990 | CEDAR      |
| 12    | 6502 NE Kendall Ave  | STD/R | 14,810   | \$356,990 | CALDWELL   |
| 14    | 6514 NE Kendall Ave  | STD/R | 9,759    | \$369,990 | CEDAR      |
| 22    | 6524 NE George Ave   | STD/R | 9,891    | \$369,990 | DUKE EXP   |
| 23    | 6523 NE George Ave   | STD/L | 10,670   | \$364,990 | COPELAND   |
| 30    | 6520 NE Caroline Ave | STD/R | 11,909   | \$364,990 | CASCADE    |

| LOT # | ADDRESS             | TYPE   | LOT SQFT | PRICE    |
|-------|---------------------|--------|----------|----------|
| 16    | 6519 NE Kendall Ave | DayL/R | 9,450    | \$74,000 |
| 17    | 6513 NE Kendall Ave | DayL/L | 9,450    | \$74,000 |
| 18    | 6507 NE Kendall Ave | DayL/L | 12,751   | \$71,000 |
| 19    | 6506 NE George Ave  | STD/R  | 12,275   | \$70,000 |
| 20    | 6512 NE George Ave  | STD/R  | 8,775    | \$70,000 |

### School District

Southeast Polk Community

### Nearest Schools

Four Mile Elementary  
Spring Creek 6th Grade Center  
Southeast Polk Junior High School  
Southeast Polk High School

### Nearest Grocery

2 miles to Fareway, 4 miles to Hy-Vee, 5 miles to Target  
5 miles to Walmart

### Nearest Gym

2 miles to Snap Fitness  
3 miles to Anytime Fitness  
3 miles to Orange Planet

### Nearest Shopping Center

7 miles to Outlets of Des Moines, 15 miles to Valley West Mall

### Home Improvement Store

5 miles to Lowe's  
6 miles to Menards

Tucked away in a quiet little neighborhood in Pleasant Hill, Sunrise Pointe is a hidden gem of a community found just east of the HWY 5 bypass. Off the beaten path, yet just minutes from access to the entire metro area. Excellent South East Polk schools with Four Mile Elementary, a community of neighbors who become friends, small town feel with plenty of amenities including parks, library, trails & local restaurants.

Dianna Elder | 641.780.8804 | dianna@teamelder.com

Listing information subject to change without notice.



#SINCE1957

# Our history builds your future.

Daylight lots are an additional \$4,000 above listing price. Walkout lots are an additional \$7,000 above listing price.

