

THE BAYSIDE SERIES

# ASPEN II

Ranch | 3 Bedrooms | 2 Full Baths



TRADITIONAL II



CRAFTSMAN



FARMHOUSE



COLONIAL II



ENGLISH COLONIAL III



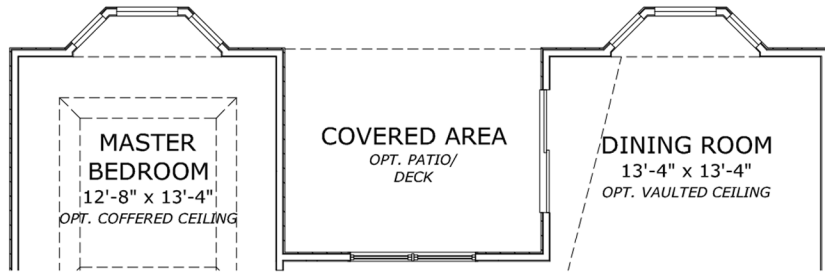
RUSTIC FARMHOUSE



CLASSIC

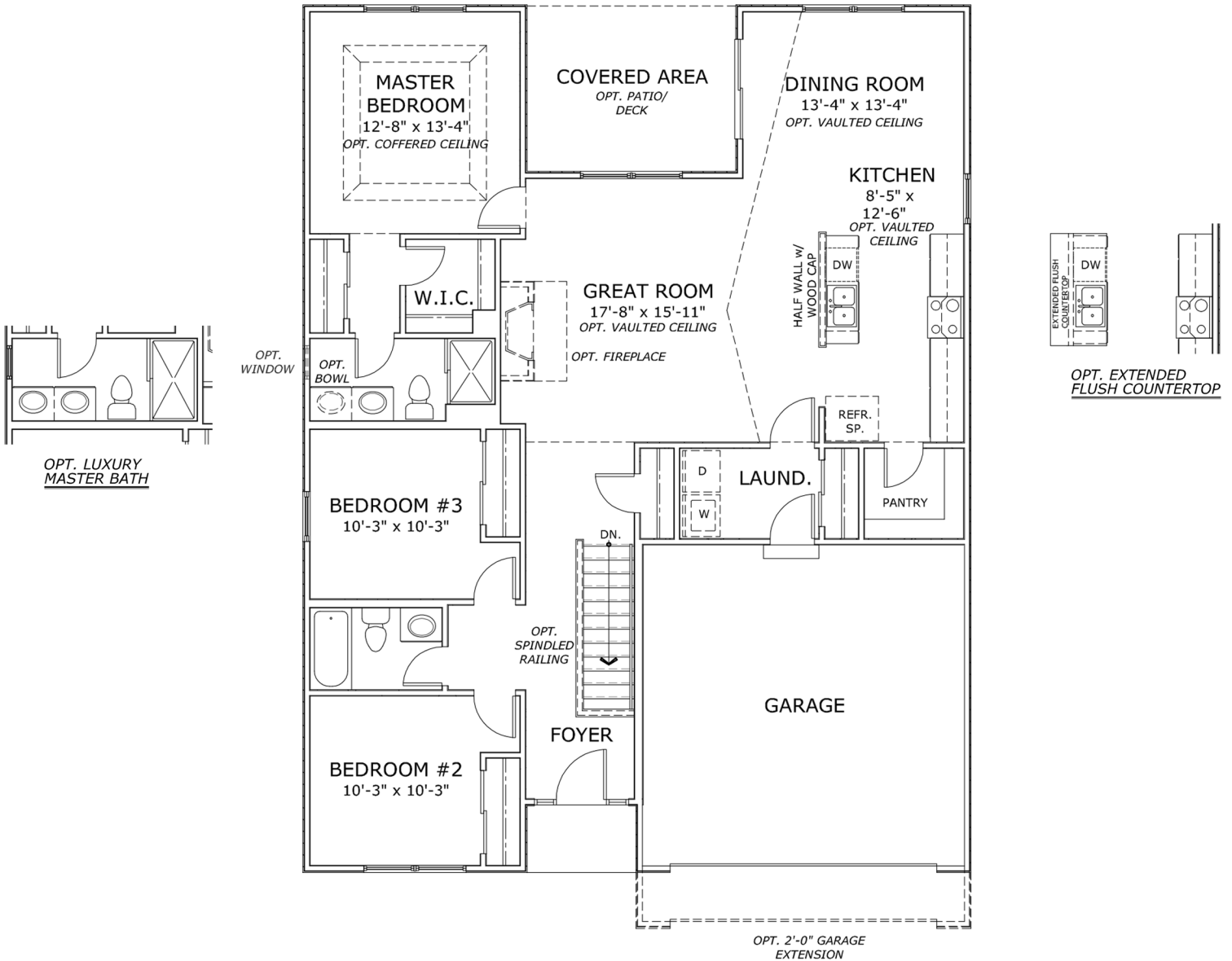


*Missouri's Largest Homebuilder*



OPT. BAY WINDOW @ MASTER BDRM.

OPT. BAY WINDOW @ DINING ROOM



**FIRST FLOOR PLAN**

BUILT BY MCBRIDE & SON HOMES, INC.

\* Due to the evolutionary changes in our design improvements process, there may be variations between these plans and the "as built" floor plans, including layout and room sizes, square footage of the residence itself, and the location and size of doors, windows, openings, door swings, and other building components, including the location of posts and beams. McBride & Son Homes, in its sole and absolute discretion, reserves the right to substitute materials of comparable quality.

©2014, McBride & Son Homes, LLC and McBride & Son Properties, LLC

These plans are the sole and absolute property of McBride & Son Homes, Inc. The use or copying of these plans, without the express written consent of McBride & Son Homes, is prohibited by law. McBride & Son Homes may take immediate legal action against any unauthorized user of these plans.

