

2795 Venice Crossing Drive

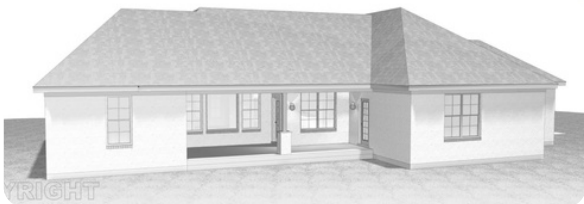
TODD
Homes
llc.com
Affordable Luxury

VENICE CROSSING | ROSS TOWNSHIP, OHIO



SPECIAL FEATURES:

- 3BR, 2.5BA, 2377 Square Foot Luxury Ranch
- 3 Car Garage!
- Every Detail has been Meticulously Designed to Offer Unparalleled Comfort
- Open Great Room with Towering 10ft Coffered Ceiling and Custom Fireplace Walks Out to a Large Covered Patio with Scenic Wooded Views
- The High-end Kitchen, a Culinary Enthusiast's Paradise, Showcasing a Magnificent Island, Perfect for Meal Prep and Casual Dining
- The Primary Suite Serves as a Tranquil Retreat, Featuring a Luxurious Walk-In Shower that Promises a Spa-Like Experience
- Located in the Sought-After Ross School District and Just Minutes from Town, Shopping, Dining and Major Highways
- Experience the Perfect Blend of Luxury and Location

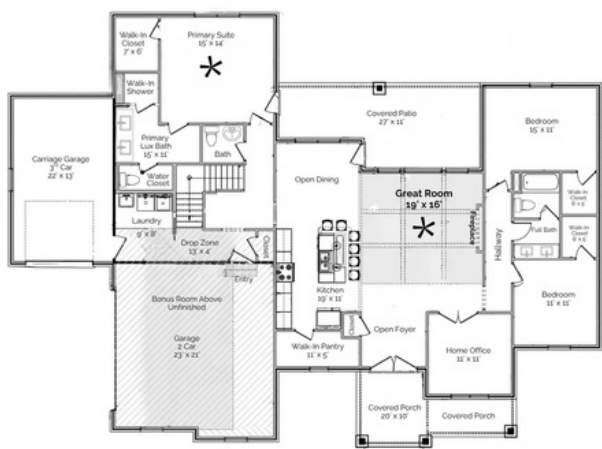


 **4**
Bedrooms

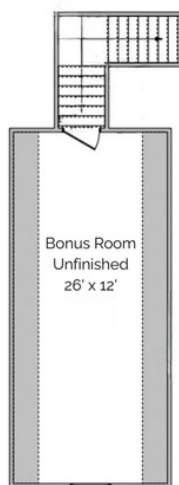
 **3.5**
Bathrooms

 **3**
Garage

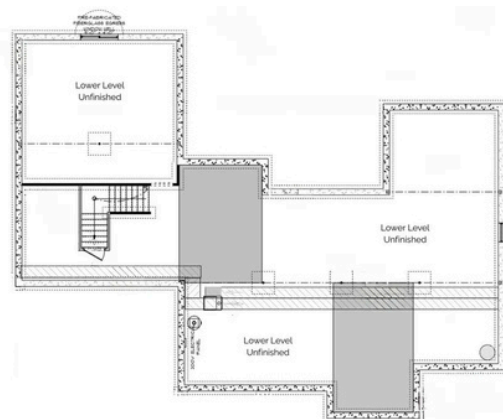
 **2377**
Square Feet



Main Level



Upper



Lower Level



Low HOA! Experience a serene countryside atmosphere, enveloped by verdant woods, tranquil ponds, and meandering creeks. Enjoy the convenience of being just moments away from the delightful downtown Ross, Ohio, along with easy access to shopping, parks, restaurants, and entertainment. Additionally, Venice Crossing is close to the Cincinnati-Northern Kentucky International Airport and I-275, ensuring seamless travel and connectivity.



The Eastwood



Venice Crossing

Copyright 2025 Todd Homes LLC. All rights reserved. Please be aware that, in line with our dedication to ongoing product enhancement, we reserve the right to alter our homes pricing, availability, features, choice of product brands, dimensions, architectural details, and design specifications. This brochure serves solely for illustrative purposes and does not form any part of a legally binding contract. Room sizes approximate.

