

# Monterey



Farmhouse



Craftsman



Heritage

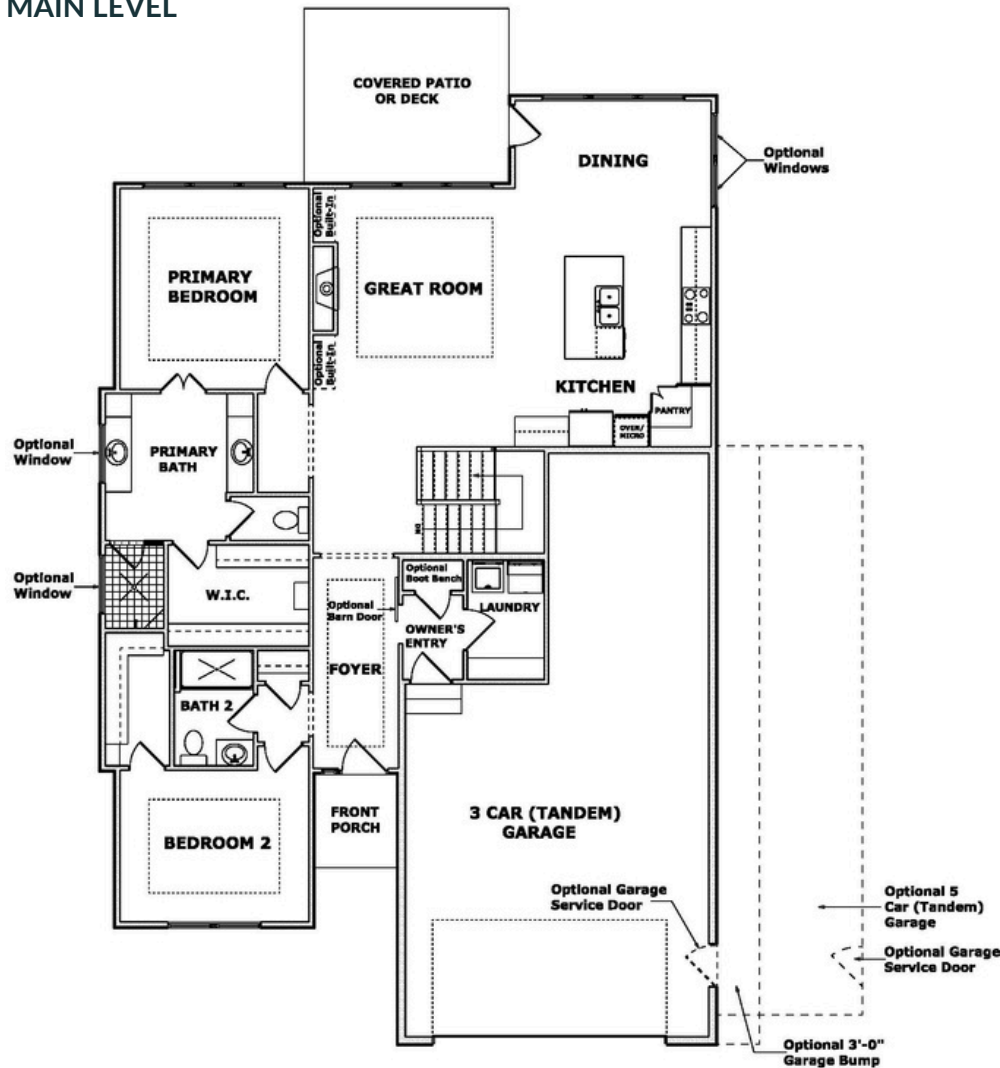


Modern Farmhouse

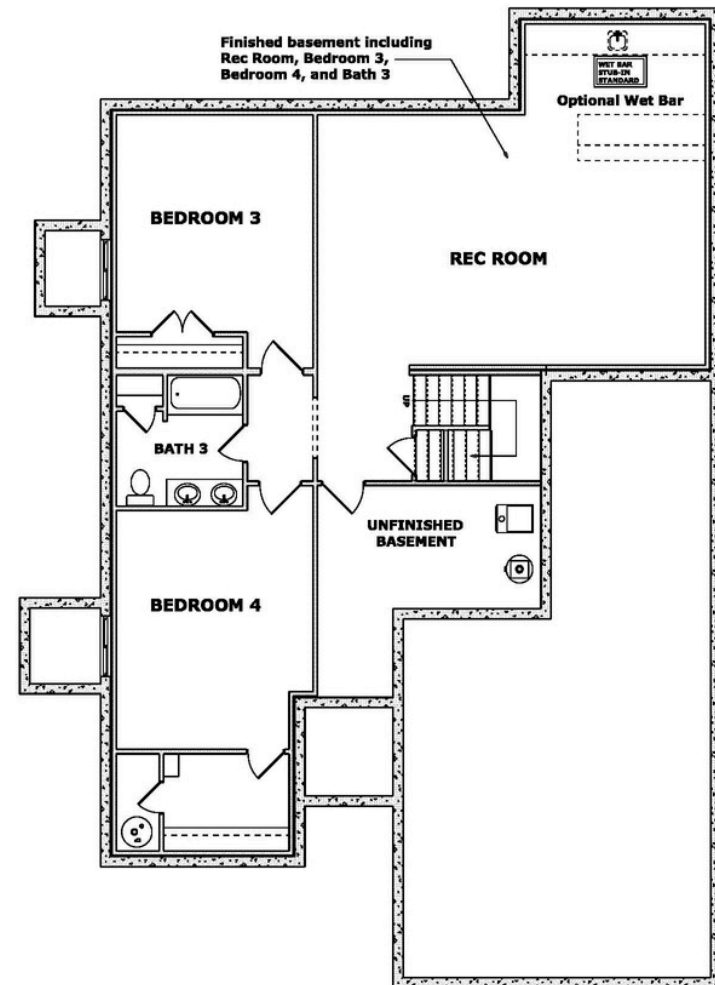


# Monterey

## MAIN LEVEL



## LOWER LEVEL



# Monterey

includes the following:

## STANDARD FEATURES

### INTERIOR FEATURES

- 6' 8" main floor interior doors
- Wide plank premium laminate flooring on main level traffic areas
- High traffic stair carpet
- Laundry room upper cabinet and hanging rod
- Gas fireplace with blower and battery back-up
- TV HDMI chase at fireplace
- Quartz countertops
- Ceiling fans in great room and primary bedroom
- Ceiling fan pre-wire and switch in all bedrooms
- Tray ceiling in foyer, great room, bedroom 2 and primary bedroom
- Straight black iron spindles on staircase
- Approx. 9' basement walls
- Plumbing stub for future wet bar
- Tile floors in all bathrooms
- Tiled primary bath shower with full view glass door
- Wood enameled shelving in all closets & pantry
- 8 lb. carpet pad
- Sherwin-Williams® interior/exterior paint
- CAT 6 outlet at GR Fireplace, primary bedroom, finished LL rec room
- Wood trimmed mirror frames in Primary bathroom and bath 2

### EXTERIOR FEATURES

- 8' tall front entry door with upgraded long door handle
- 3 car garage
- 8' tall garage doors (non-insulated)
- Wi-Fi enabled garage door openers with (1) keypad
- Fully sodded yard with front landscaping
- Irrigation system with shrub zone
- Recessed soffit lighting
- Covered rear patio with fan & light

### KITCHEN

- Built-in GE® stainless steel appliances:
  - Gas cooktop, built-in oven and microwave, upgraded dishwasher with SS interior
- Custom site-finished wood cabinetry with soft close drawers/doors
- Choice of enameled or stained cabinetry
- Tile backsplash
- Trash/recycle pull-out with bins
- Stainless Steel undermount sink
- Oversized island
- USB outlet

### ENERGY EFFICIENCY

- 95% high efficiency gas furnace
- 14 SEER air conditioner
- Programmable thermostat
- Pella® vinyl Low-E thermal windows
- Passive radon mitigation system
- LED light bulbs throughout
- Whole house humidifier

### WARRANTY

*Your new home will be enrolled in the 2-10 Home Buyers Warranty, a nationwide program. This includes:*

- 1 Year workmanship
- 2 Year systems
- 10 Year structural



BE INSPIRED. BUILD INSPIRED. LIVE INSPIRED.

**\*\*Standard Features are subject to change without notice and could vary by floor plan, lot, and community.**