

# DESIGN

## LAKESIDE - 5434



A



B



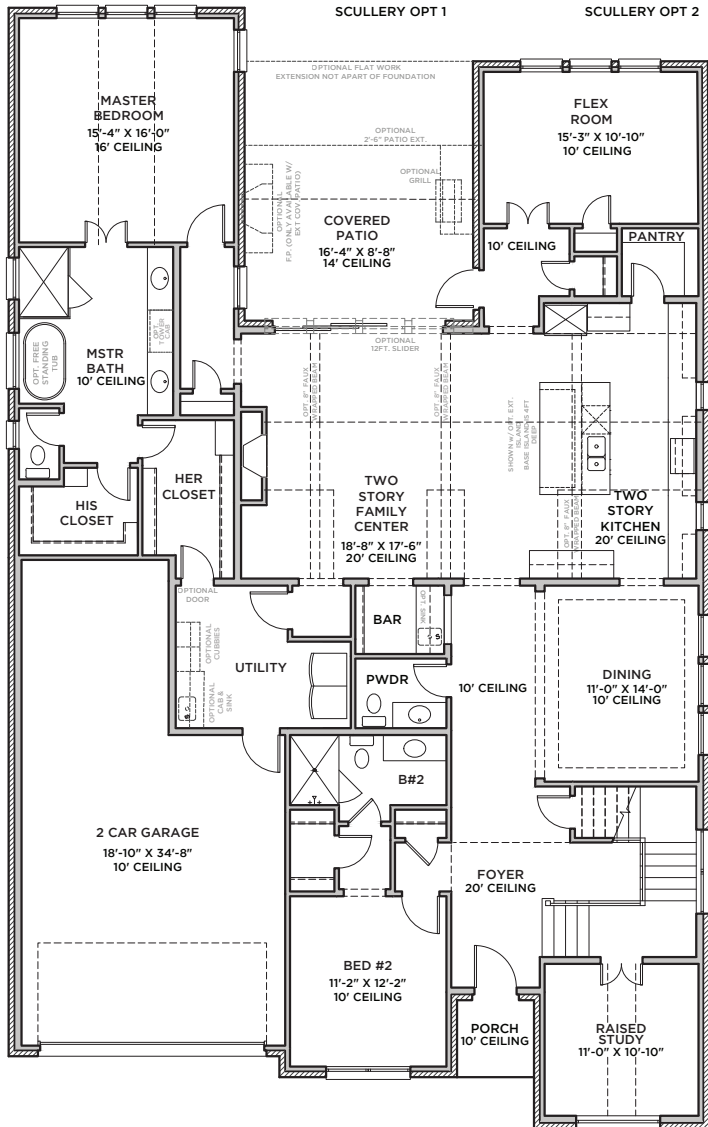
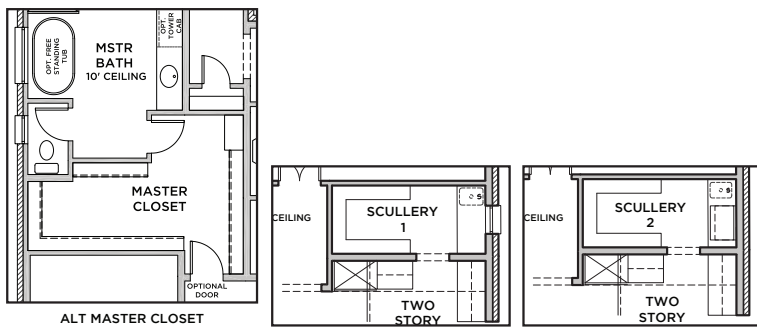
C



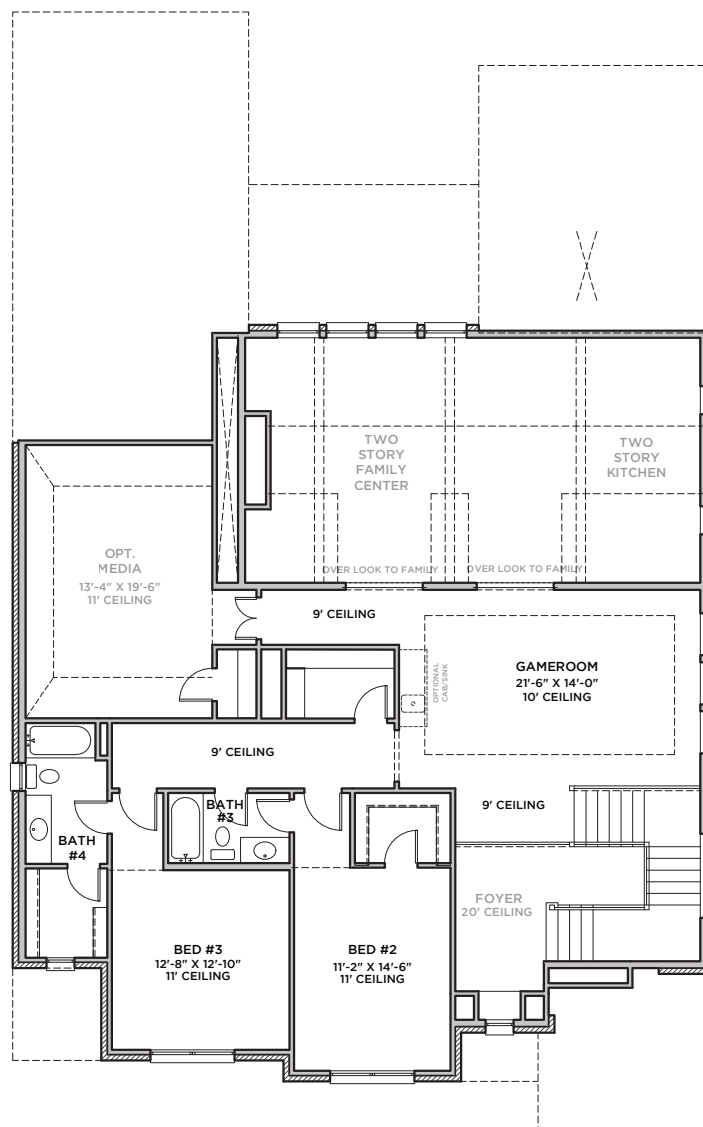
D



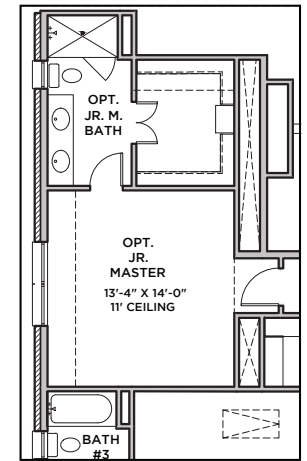
All Product including Architectural Designs, ©2000-2026, Shaddock Homes, LTD., All rights reserved. There may be existing or future design changes made in the floorplans, building products, methods, square footage or designs used in our homes that are not reflected in our information, sales center or in our models. The materials, designs, square footages, features, and amenities shown are based upon current development plans, which are subject to change without notice. No guarantee is made that the designs, square footages, materials, features, and amenities depicted by artist's renderings or otherwise described will be built, or if built, will be of the same type, size or nature as depicted or described. All stone elevations, metal roofs, cast stone door and window headers and solid sawn cedar posts are optional, but available via change order. Front doors will match the specification sheet or chosen door upgrade. Prices and terms subject to change without notice. REVISION DATE: 8.14.2025



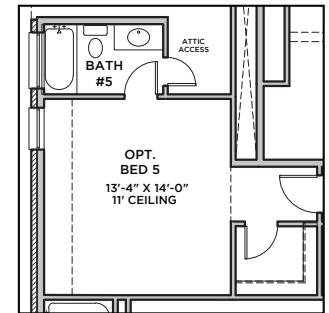
FIRST FLOOR



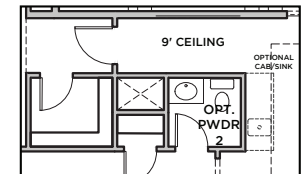
SECOND FLOOR



OPT. JR. MASTER



OPT. BED 5 & BATH 5



OPT. POWDER

LAKESIDE  
5434 (8,14,25)

	S.FT
First Floor	2790
Second Floor	1168
<b>Total Living Area</b>	<b>3958</b>
2 Car Garage	592
Covered Entry	19
Covered Patio	164
Total Area	4733

Options	S.FT
Bed 5/Bath 5	277
JR Master Suite	378
Media Up	316