

Dawson



1,295 sq ft



3 bed



2 bath



a

modern



b

craftsman



e

craftsman



f

mountain cottage



g

modern tudor

FEATURES YOU'LL LOVE ABOUT THIS HOME

perfectly designed family entrance through the garage with extra storage

spacious living room with open layout and the option to add a cozy fireplace

four elevations to choose from and get the look that fits your style



IDEAL
homes | neighborhoods®



HERE'S HOW WE DEVELOP EVERY IDEAL FLOOR PLAN:

We consider everything ...

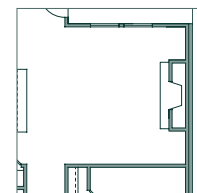
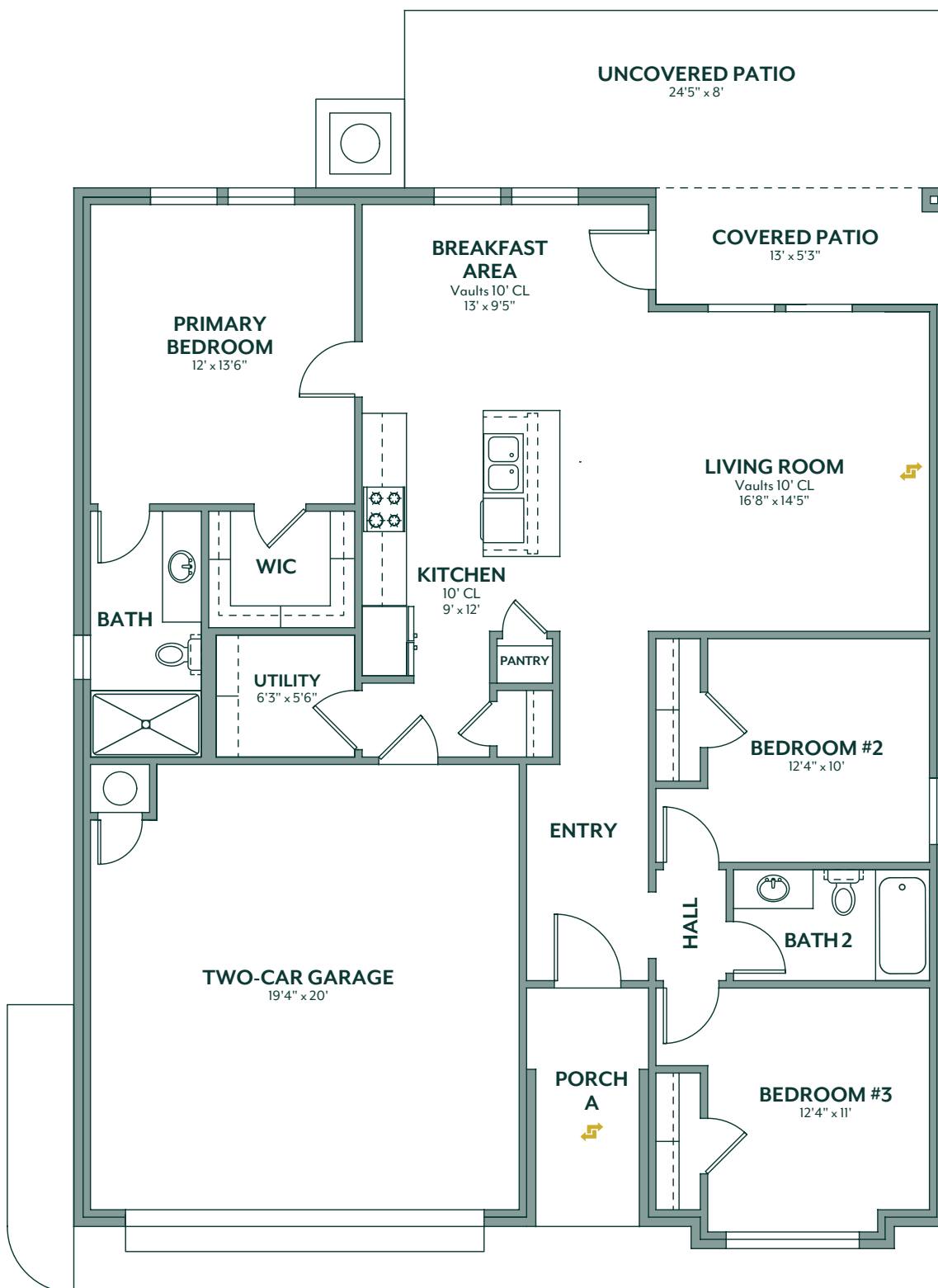
- sight lines & traffic flow
- furniture placement
- usable space
- architectural details
- window placement & size for optimal lighting
- function & low maintenance needs

405.364.1152

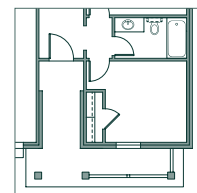
www.idealhomes.com



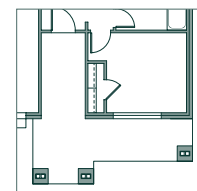
✓ customize this plan



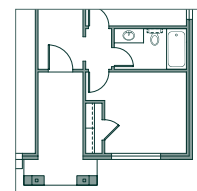
fireplace



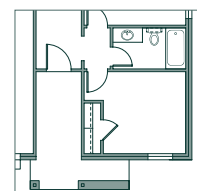
porch b



porch e



porch f



porch g



Scan the code to view a **photo gallery & included features**
for the Dawson floor plan