



SIENA AT SAN MARCO

Pittsburg, CA

SEENO HOMES
— SINCE 1938 —

Site Map

Siena at San Marco



Legend

● **Alera**

± 2,371 Sq. Ft. | 2 Story
4 Beds | 3 Baths
2 Car Garage

● **Cielo**

± 2,877 Sq. Ft. | 2 Story
5 Beds | 3.5 Baths
2 Car Garage

● **Enzo**

± 3,262 Sq. Ft. | 2 Story
5 Beds | 3 Baths
2 Car Garage

● **Giano**

± 3,516 Sq. Ft. | 3 Story
4 Beds | 3.5 Baths
3 Car Garage

Seeno Homes is an Equal Housing Opportunity builder. Features, specifications, plans, elevations, locations, materials, prices, terms and conditions and other information are subject to change without notice or obligations. All offers are subject to final contract terms. Standard and optional specifications vary per plan type. All square footage is approximate. Not all features are available in all plans. All renderings, maps, displays and handouts are for illustration purposes only and may not accurately depict the actual condition of the item being represented. See our Sales Representative for details. Seecon Realty, Inc. CaDRE#01971735



Included Features

Siena at San Marco

INTERIOR DESIGN

- 9' Ceiling Heights
- 8' Door Heights
- Two-Tone Paint Throughout
- Rounded Sheetrock Corners
- 5 1/4" Decorative Baseboards
- Wood Window Sills on Operating Windows
- Satin Nickel Door Hardware
- Stained Wood Cabinets Throughout with Square Recessed Door
- Stained Wood Handrails with Wrought Iron Balusters
- Undermount Bathroom Sinks at Primary and Secondary Baths

SLEEK & SOPHISTICATED KITCHENS

- Large Kitchen Island with Ample Space for Entertaining
- Granite Slab Countertops at Kitchen with 1 1/2" Edge & 6" Backsplash
- Stainless Steel Undermount Kitchen Sink and Pull Down Faucet
- Stainless Steel Kitchen Appliance Package with 5 Burner Gas Range, Microwave & Dishwasher
- 2 USB Ports in Kitchen

LUXURIOUS PRIMARY SUITES

- Spacious Bedrooms with Generous Walk-In Closet
- Ceiling Fan Pre-Wire
- Dual Bath Vanities with Engineered Marble Countertops
- Semi-Frameless Glass Shower Enclosure
- Engineered Marble Shower Surround

MODERN & ENERGY EFFICIENT AMENITIES

- **Solar Panels Included in Purchase Price of Home**
- Pre-Wired for Ceiling Fan at Primary Bedroom, Family Room and Loft (Per Plan)
- Garage Prepped for Electric Vehicle Charging Station
- Heat Pump Water Heater
- LED Lighting Throughout
- Vacancy Sensing Lighting at Bathrooms
- Automatic Humidity Sensing Bathroom Fans
- Electric Dryer Hookup
- Wi-Fi Capable Electric Garage Door Opener (Smartphone Controlled with App)
- Multi-Zoned Air Conditioning System at Two Story Plans
- Dual Glazed Vinyl Framed Windows and Sliding Glass Doors
- Energy Efficient Cool Roof System
- Water Efficient Front Yard Landscaping
- Bike Racks In Garage

Seeno Homes is an Equal Housing Opportunity builder. Features, specifications, plans, elevations, locations, materials, prices, terms and conditions and other information are subject to change without notice or obligations. All offers are subject to final contract terms. Standard and optional specifications vary per plan type. All square footage is approximate. Not all features are available in all plans. All renderings, maps, displays and handouts are for illustration purposes only and may not accurately depict the actual condition of the item being represented. See our Sales Representative for details. Seecon Realty, Inc. CalDRE#01971735



Alera

Siena at San Marco

2,371

Sq. Ft.

4

Beds

3

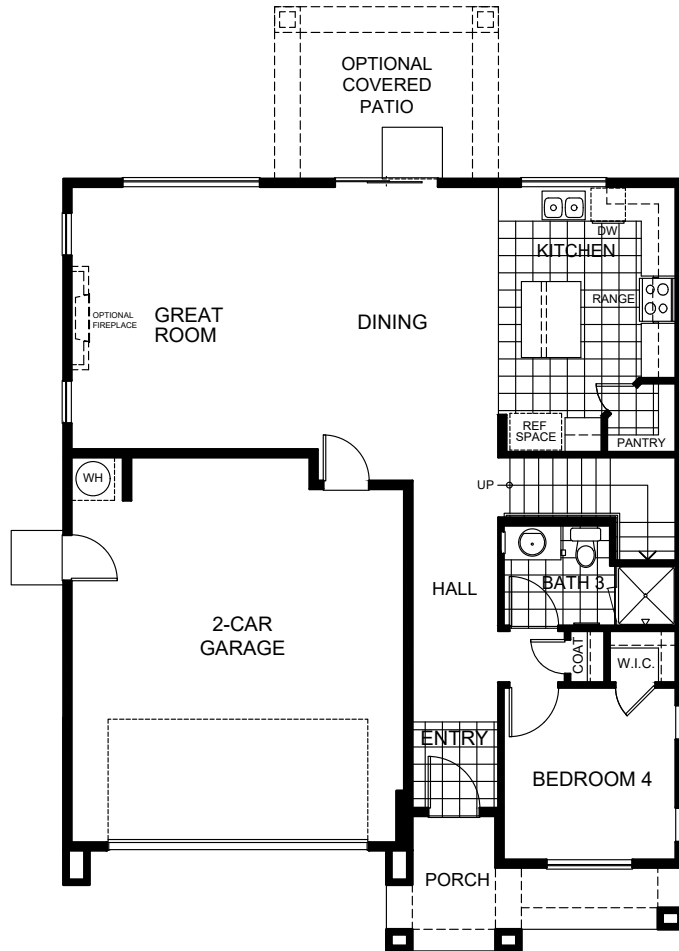
Baths

2

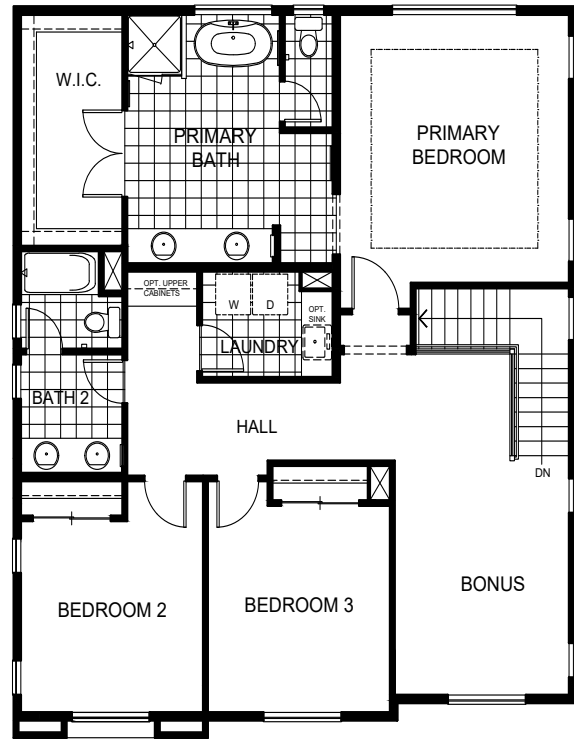
Car Garage

2

Story



First Floor



Second Floor



Elevation A - Traditional



Elevation B - Farmhouse



Elevation C - Contemporary

Seeno Homes is an Equal Housing Opportunity builder. Features, specifications, plans, elevations, locations, materials, prices, terms and conditions and other information are subject to change without notice or obligations. All offers are subject to final contract terms. Standard and optional specifications vary per plan type. All square footage is approximate. Not all features are available in all plans. All renderings, maps, displays and handouts are for illustration purposes only and may not accurately depict the actual condition of the item being represented. See our Sales Representative for details. Seecon Realty, Inc. CalDRE#01971735



Cielo

Siena at San Marco

2,877

Sq. Ft.

5

Beds

3.5

Baths

2

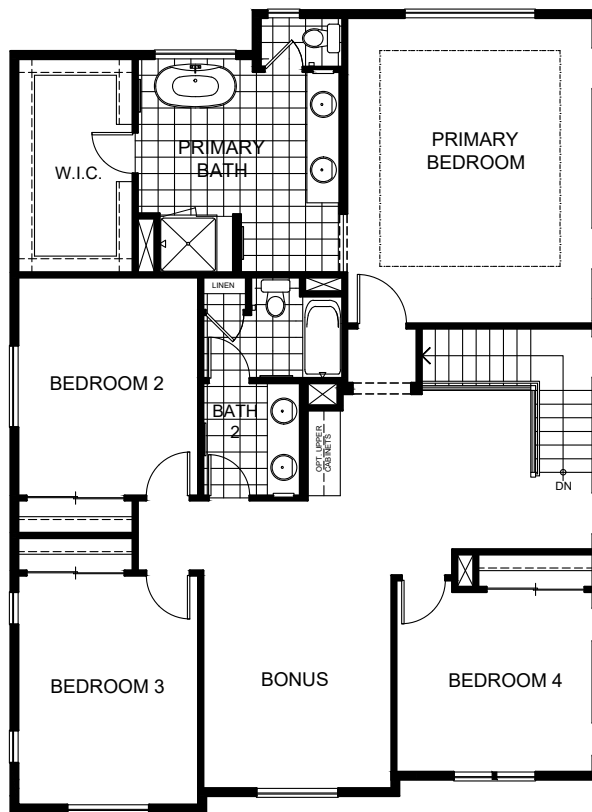
Car Garage

2

Story



First Floor



Second Floor



Elevation A - Traditional



Elevation B - Farmhouse



Elevation C - Contemporary

Seeno Homes is an Equal Housing Opportunity builder. Features, specifications, plans, elevations, locations, materials, prices, terms and conditions and other information are subject to change without notice or obligations. All offers are subject to final contract terms. Standard and optional specifications vary per plan type. All square footage is approximate. Not all features are available in all plans. All renderings, maps, displays and handouts are for illustration purposes only and may not accurately depict the actual condition of the item being represented. See our Sales Representative for details. Seecon Realty, Inc. CalDRE#01971735



Enzo

Siena at San Marco

3,262

Sq. Ft.

5

Beds

3

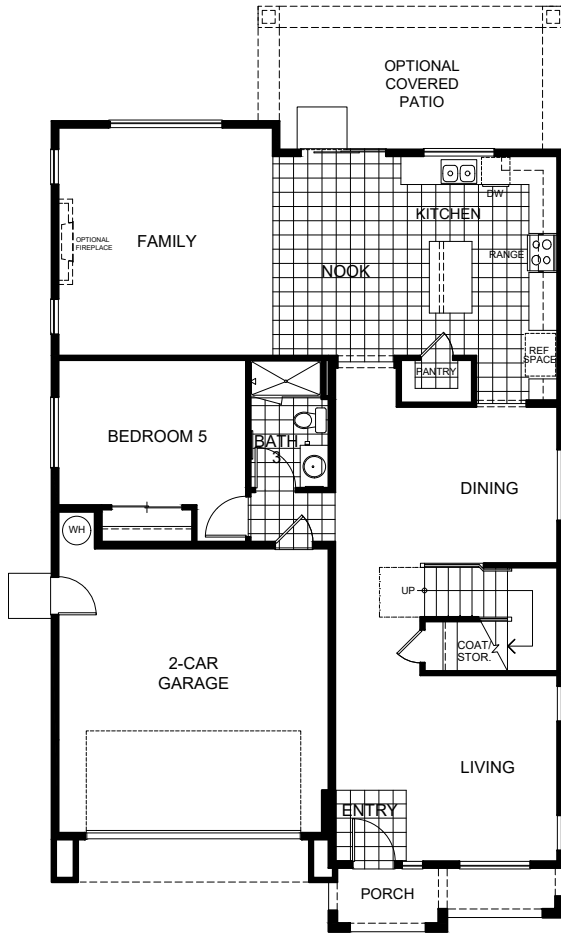
Baths

2

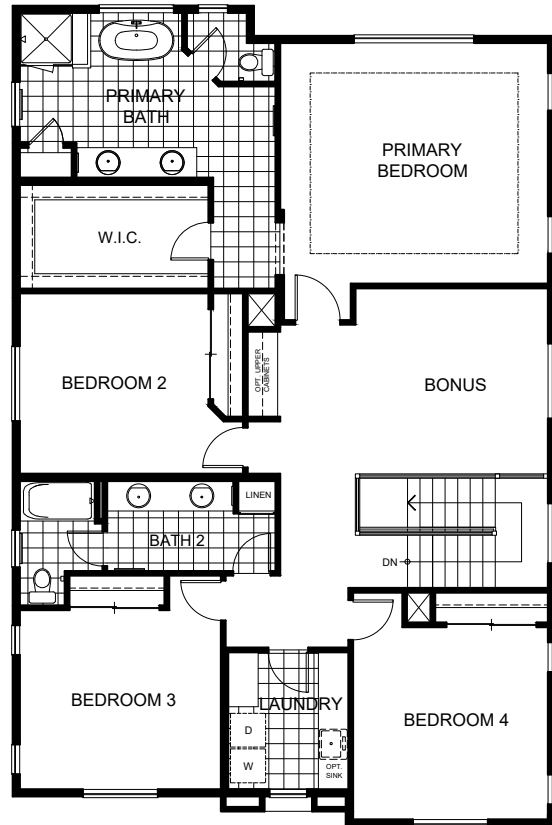
Car Garage

2

Story



First Floor



Second Floor



Elevation A - Traditional



Elevation B - Farmhouse



Elevation C - Contemporary

Seeno Homes is an Equal Housing Opportunity builder. Features, specifications, plans, elevations, locations, materials, prices, terms and conditions and other information are subject to change without notice or obligations. All offers are subject to final contract terms. Standard and optional specifications vary per plan type. All square footage is approximate. Not all features are available in all plans. All renderings, maps, displays and handouts are for illustration purposes only and may not accurately depict the actual condition of the item being represented. See our Sales Representative for details. Seecon Realty, Inc. CalDRE#01971735



Giano

Siena at San Marco

3,516

Sq. Ft.

4

Beds

3.5

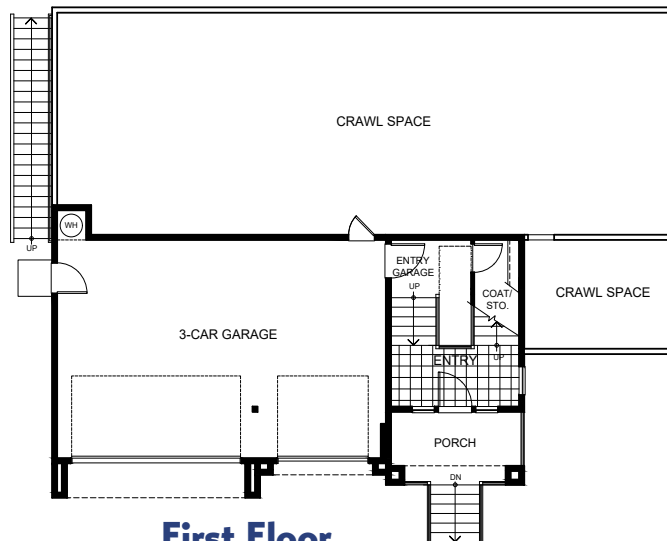
Baths

3

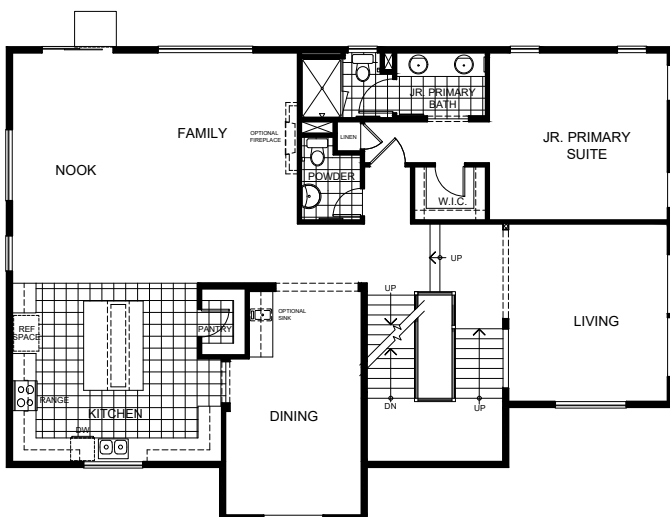
Car Garage

3

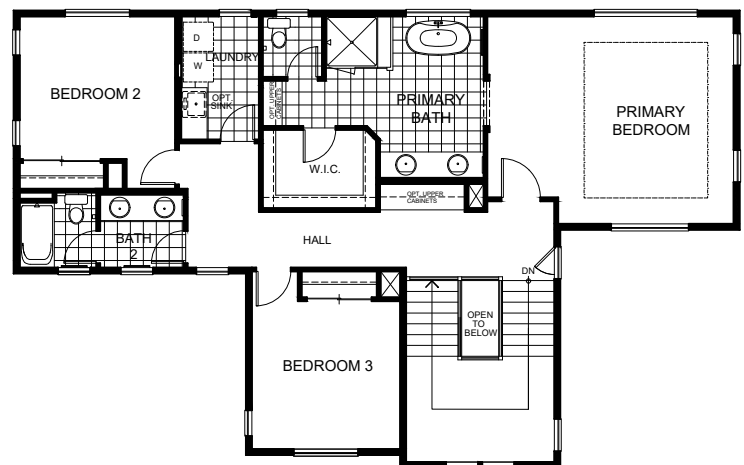
Story



First Floor



Second Floor



Third Floor



Elevation A - Traditional



Elevation B - Farmhouse



Elevation C - Contemporary

Seeno Homes is an Equal Housing Opportunity builder. Features, specifications, plans, elevations, locations, materials, prices, terms and conditions and other information are subject to change without notice or obligations. All offers are subject to final contract terms. Standard and optional specifications vary per plan type. All square footage is approximate. Not all features are available in all plans. All renderings, maps, displays and handouts are for illustration purposes only and may not accurately depict the actual condition of the item being represented. See our Sales Representative for details. Seecon Realty, Inc. CaLDRE#01971735



Siena at San Marco

Sales Office:

3304 Vista Meadows Drive
Pittsburg, CA 94565
(925) 261-0711 | SeenoHomes.com
Siena@seeconrealty.com

