



PROVIDENCE
HOMES



Elevation A



Elevation B



Elevation C

The Monterey

1616 Sq. Ft. | 2 BDRM + Loft 1.5 BA

FIRST FLOOR



SECOND FLOOR



Savannah Cove - Paired Villas

Artist's renderings may vary in precise detail as compared to actual construction. All dimensions are approximate. Providence Real Estate Development, LLC. DBA Providence Homes in an effort to improve its product, reserves the right to make changes without notice. Actual home may be built as shown or reversed as dictated by engineered site plan. © Copyright 2025, Providence Real Estate Development, LLC.



PROVIDENCE
HOMES



Elevation A



Elevation B



Elevation C

The Monterey - End Condition

1616 Sq. Ft. | 2 BDRM + Loft 1.5 BA

FIRST FLOOR



SECOND FLOOR

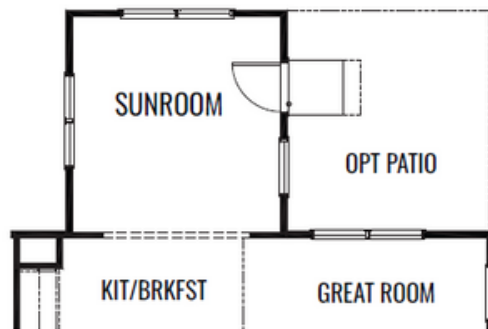


Savannah Cove - Paired Villas

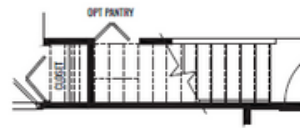
Artist's renderings may vary in precise detail as compared to actual construction. All dimensions are approximate. Providence Real Estate Development, LLC. DBA Providence Homes in an effort to improve its product, reserves the right to make changes without notice. Actual home may be built as shown or reversed as dictated by engineered site plan. © Copyright 2025, Providence Real Estate Development, LLC.

The Monterey

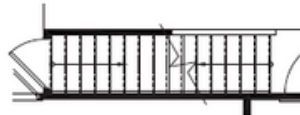
OPTIONS



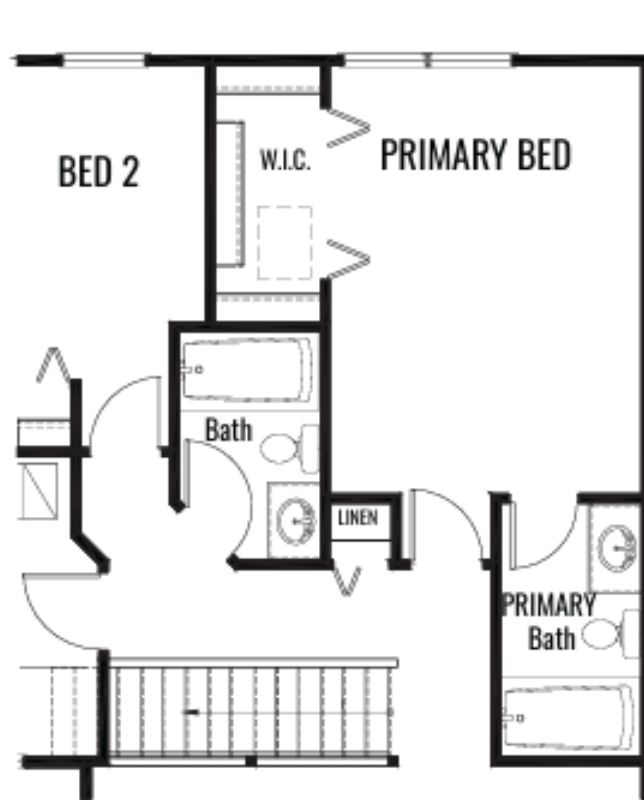
OPT SUNROOM



OPT CLOSET



OPT BASEMENT



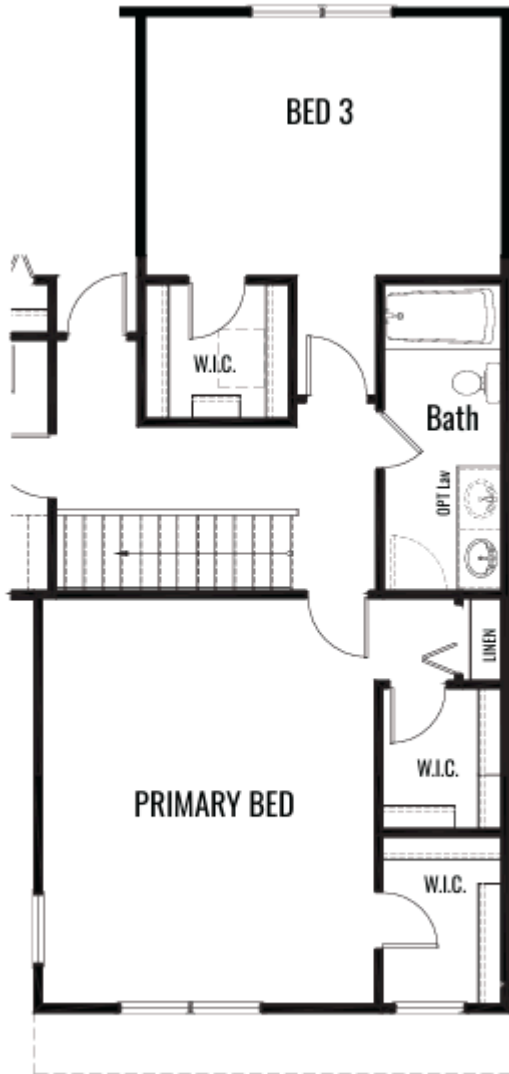
OPT PRIVATE BATH

Savannah Cove - Paired Villas

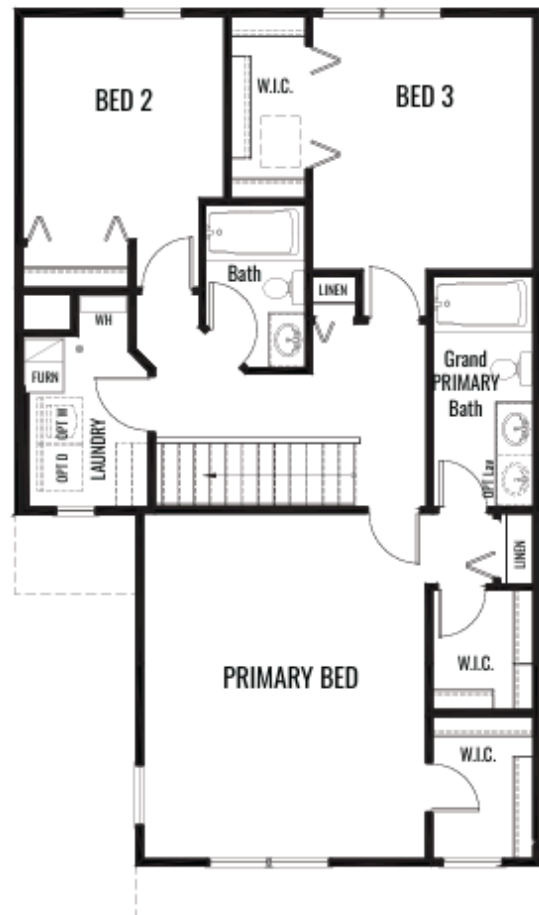
Artist's renderings may vary in precise detail as compared to actual construction. All dimensions are approximate. Providence Real Estate Development, LLC. DBA Providence Homes in an effort to improve its product, reserves the right to make changes without notice. Actual home may be built as shown or reversed as dictated by engineered site plan. © Copyright 2025, Providence Real Estate Development, LLC.

The Monterey

OPTIONS



OPT GRAND PRIMARY BEDROOM



OPT GRAND PRIVATE BATH

Savannah Cove - Paired Villas

Artist's renderings may vary in precise detail as compared to actual construction. All dimensions are approximate. Providence Real Estate Development, LLC. DBA Providence Homes in an effort to improve its product, reserves the right to make changes without notice. Actual home may be built as shown or reversed as dictated by engineered site plan. © Copyright 2025, Providence Real Estate Development, LLC.