



THE ESTATES AT NEWPORT

West Sacramento, CA

SEENO HOMES
— SINCE 1938 —

Site Map

The Estates at Newport



Seeno Homes is an Equal Housing Opportunity builder. Features, specifications, plans, elevations, locations, materials, prices, terms and conditions and other information are subject to change without notice or obligations. All offers are subject to final contract terms. Standard and optional specifications vary per plan type. All square footage is approximate. Not all features are available in all plans. All renderings, maps, displays and handouts are for illustration purposes only and may not accurately depict the actual condition of the item being represented. See our Sales Representative for details. Seecon Realty, Inc. CaDRE#01971735



Included Features

The Estates at Newport

DECORATIVE FEATURES

- 9' Ceiling Heights
- 8' Door Heights
- Satin Nickel Door Hardware Throughout
- Stained Wood Cabinets Throughout with Shaker Door Style
- Stained Wood Handrails with Painted Square Balusters
- Dublin Precast Fireplace Surround
- Two-Tone Paint Throughout
- Rounded Sheetrock Corners
- 5 1/4" Decorative Baseboards Throughout
- Undermount Bathroom Sinks at Primary and Secondary Baths

SLEEK & SOPHISTICATED KITCHENS

- Large Kitchen Island with Ample Space for Entertaining
- Granite Slab Countertops at Kitchen with 1 1/2" Edge & 6" Backsplash
- Stainless Steel Undermount Kitchen Sink with Chrome Pull Down Faucet
- White Kitchen Appliance Package with 4 Burner Gas Range
- 2 USB Ports in Kitchen

LUXURIOUS PRIMARY SUITES

- Spacious Bedrooms with Generous Walk-In Closets
- Ceiling Fan Pre-Wire
- Dual Bath Vanities with Solid Surface Countertops
- Semi-Frameless Glass Shower Enclosure
- Solid Surface Shower Surrounds

MODERN & ENERGY EFFICIENT AMENITIES

- **Solar Panels Included in Purchase Price of Home**
- Pre-Wired for Ceiling Fan at Primary Bedroom, Family Room and Loft (Per Plan)
- Garage Prepped for Electric Vehicle Charging Station
- Heat Pump Water Heater
- LED Lighting Throughout
- Vacancy Sensing Lighting at Bathrooms
- Automatic Humidity Sensing Bathroom Fans
- Dryer Stubbed for Gas and Electric Hookups
- Wi-Fi Capable Electric Garage Door Opener (Smartphone Controlled with App)
- Multi-Zoned Air Conditioning System at Two Story Plans
- Dual Glazed Vinyl Framed Windows and Sliding Glass Doors
- Energy Efficient Cool Roof System
- Water Efficient Front Yard Landscaping

Seeno Homes is an Equal Housing Opportunity builder. Features, specifications, plans, elevations, locations, materials, prices, terms and conditions and other information are subject to change without notice or obligations. All offers are subject to final contract terms. Standard and optional specifications vary per plan type. All square footage is approximate. Not all features are available in all plans. All renderings, maps, displays and handouts are for illustration purposes only and may not accurately depict the actual condition of the item being represented. See our Sales Representative for details. Seecon Realty, Inc. CaIDRE#01971735



Argo

The Estates at Newport

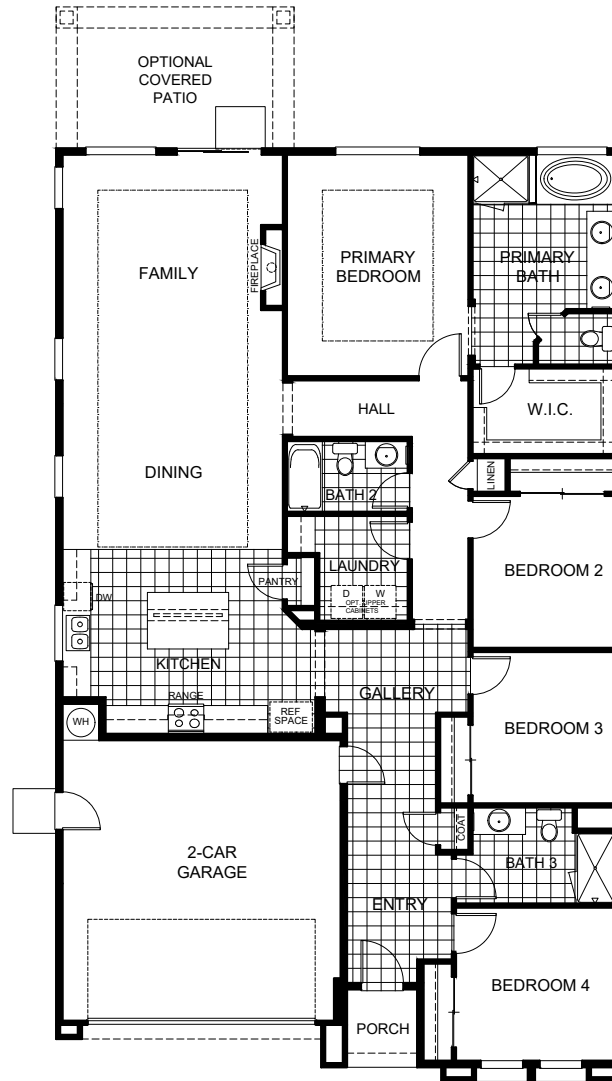
2,105
Sq. Ft.

4
Beds

3
Baths

2
Car Garage

1
Story



Elevation A



Elevation B



Elevation C - **Modeled**

Seeno Homes is an Equal Housing Opportunity builder. Features, specifications, plans, elevations, locations, materials, prices, terms and conditions and other information are subject to change without notice or obligations. All offers are subject to final contract terms. Standard and optional specifications vary per plan type. All square footage is approximate. Not all features are available in all plans. All renderings, maps, displays and handouts are for illustration purposes only and may not accurately depict the actual condition of the item being represented. See our Sales Representative for details. Seecon Realty, Inc. CaLDRE#01971735



Baltic

The Estates at Newport

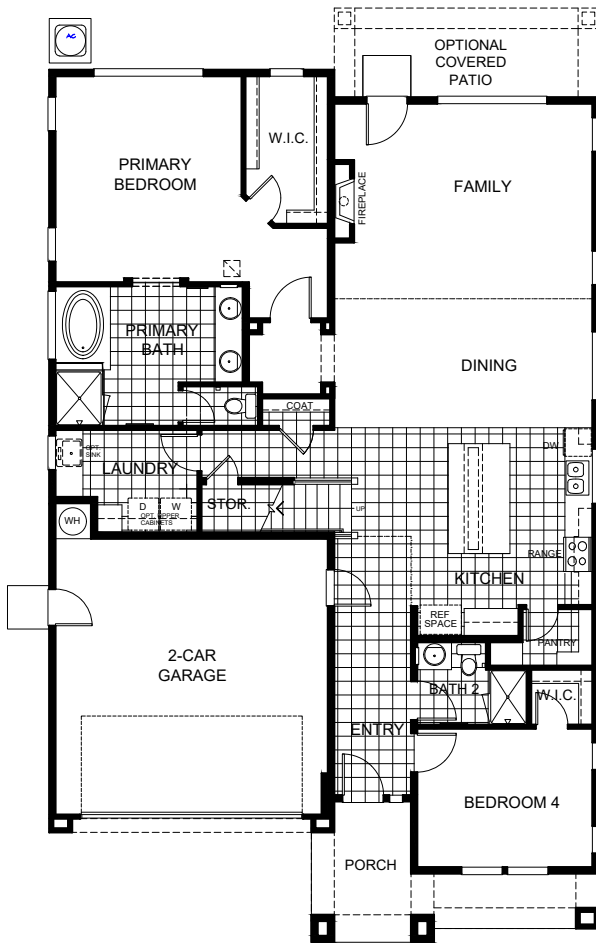
2,770
Sq. Ft.

4
Beds

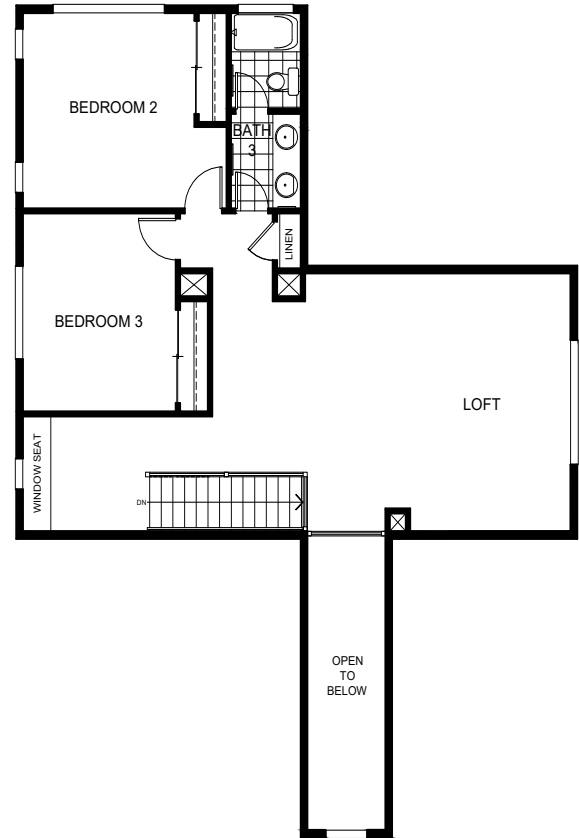
3
Baths

2
Car Garage

2
Story



First Floor



Second Floor



Elevation A - Modeled



Elevation B



Elevation C

Seeno Homes is an Equal Housing Opportunity builder. Features, specifications, plans, elevations, locations, materials, prices, terms and conditions and other information are subject to change without notice or obligations. All offers are subject to final contract terms. Standard and optional specifications vary per plan type. All square footage is approximate. Not all features are available in all plans. All renderings, maps, displays and handouts are for illustration purposes only and may not accurately depict the actual condition of the item being represented. See our Sales Representative for details. Seecon Realty, Inc. CalDRE#01971735



Caspian

The Estates at Newport

2,869
Sq. Ft.

4-5
Beds

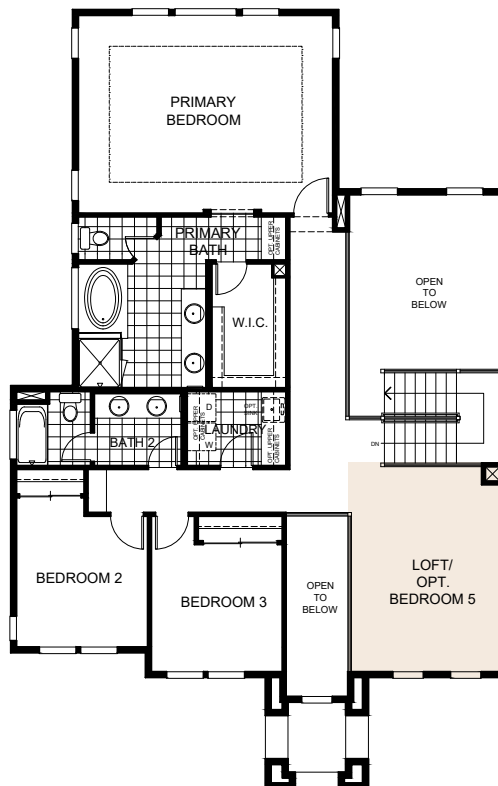
3
Baths

2
Car Garage

2
Story



First Floor



Second Floor



**Optional Bed 5
in lieu of Loft**



Elevation A



Elevation B - **Modeled**



Elevation C

Seeno Homes is an Equal Housing Opportunity builder. Features, specifications, plans, elevations, locations, materials, prices, terms and conditions and other information are subject to change without notice or obligations. All offers are subject to final contract terms. Standard and optional specifications vary per plan type. All square footage is approximate. Not all features are available in all plans. All renderings, maps, displays and handouts are for illustration purposes only and may not accurately depict the actual condition of the item being represented. See our Sales Representative for details. Seecon Realty, Inc. CaLDRE#01971735



Dawson

The Estates at Newport

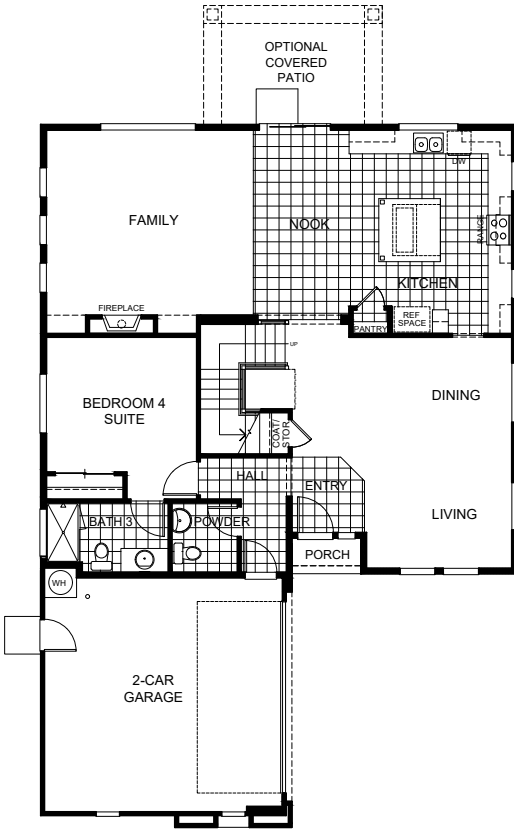
3,123
Sq. Ft.

4-5
Beds

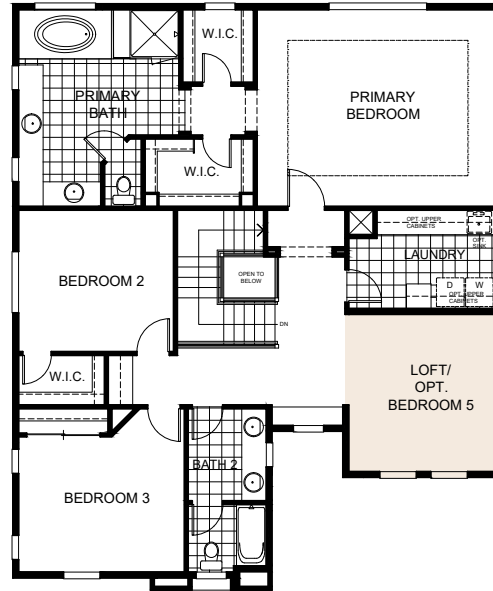
3.5
Baths

2
Car Garage

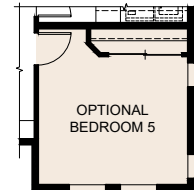
2
Story



First Floor



Second Floor



**Optional Bed 5
in lieu of Loft**



Elevation A



Elevation B



Elevation C - **Modeled**

Seeno Homes is an Equal Housing Opportunity builder. Features, specifications, plans, elevations, locations, materials, prices, terms and conditions and other information are subject to change without notice or obligations. All offers are subject to final contract terms. Standard and optional specifications vary per plan type. All square footage is approximate. Not all features are available in all plans. All renderings, maps, displays and handouts are for illustration purposes only and may not accurately depict the actual condition of the item being represented. See our Sales Representative for details. Seecon Realty, Inc. CalDRE#01971735



Emory

The Estates at Newport

2,380
Sq. Ft.

5
Beds

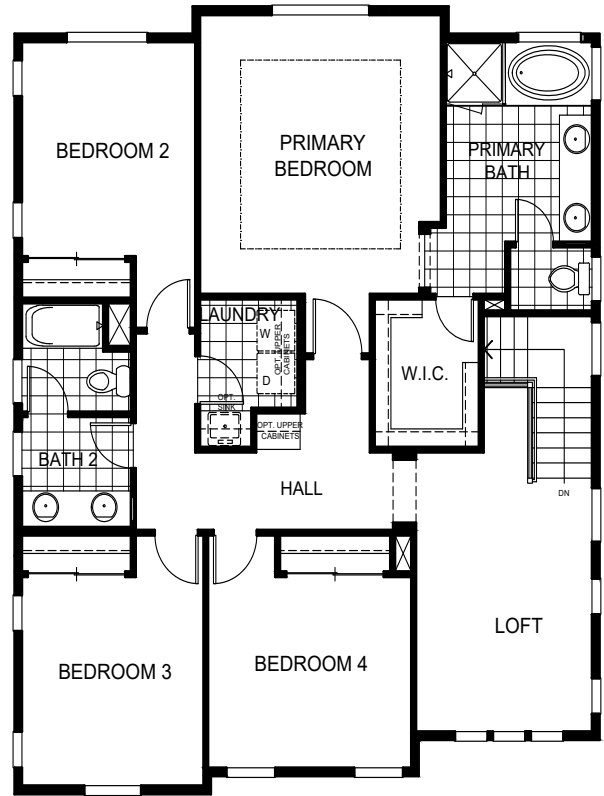
3
Baths

2
Car Garage

2
Story



First Floor



Second Floor



Elevation A

Seeno Homes is an Equal Housing Opportunity builder. Features, specifications, plans, elevations, locations, materials, prices, terms and conditions and other information are subject to change without notice or obligations. All offers are subject to final contract terms. Standard and optional specifications vary per plan type. All square footage is approximate. Not all features are available in all plans. All renderings, maps, displays and handouts are for illustration purposes only and may not accurately depict the actual condition of the item being represented. See our Sales Representative for details. Seecon Realty, Inc. CaLDRE#01971735



The Estates at Newport

Sales Office:

2836 Elderberry Street
West Sacramento, CA 95691

(925) 440-3055 | SeenoHomes.com
NewportEstates@seeconrealty.com

