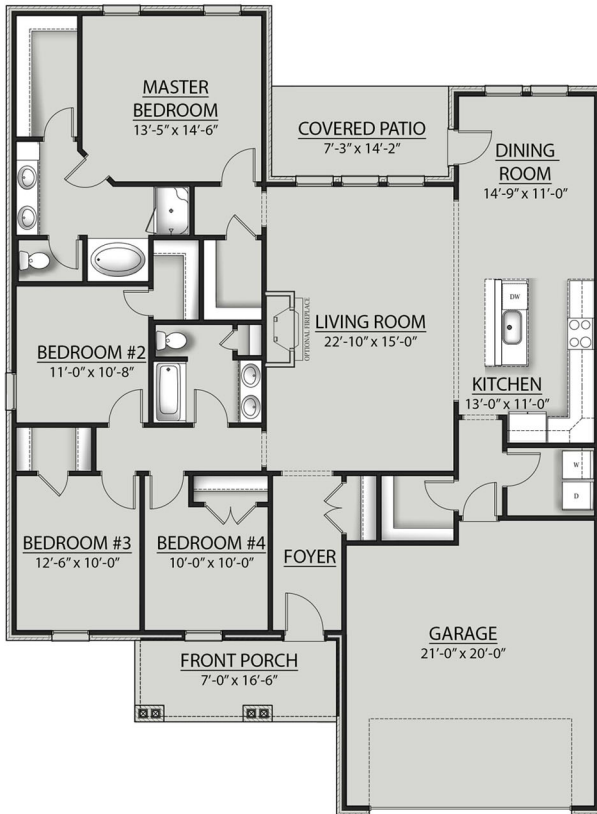


THE RODESSA G IV PLAN



Living Area

1986 Square Feet

Total Area

2680 Square Feet

Features

- Open Floor Plan
- 4 Bedrooms, 2 Bathrooms
- Two Car Garage
- Brick & Siding Exterior
- Covered Patio
- Recessed Can Lighting in Kitchen
- Walk-In Pantry
- Walk-In Master Closet
- Double Master Vanity
- Master Garden Tub
- Separate Master Shower



Floor plans and elevations are subject to change without notice. Elevations and renderings are artistic conceptions and may not accurately depict home styles. Characteristics, including but not limited to windows, doors, plan configurations and orientations are subject to change per home site. Information contained in this flyer is subject to errors, omissions, changes, withdrawals and prior sales without notice.