

Kensington



1,989 sq ft



4 bed

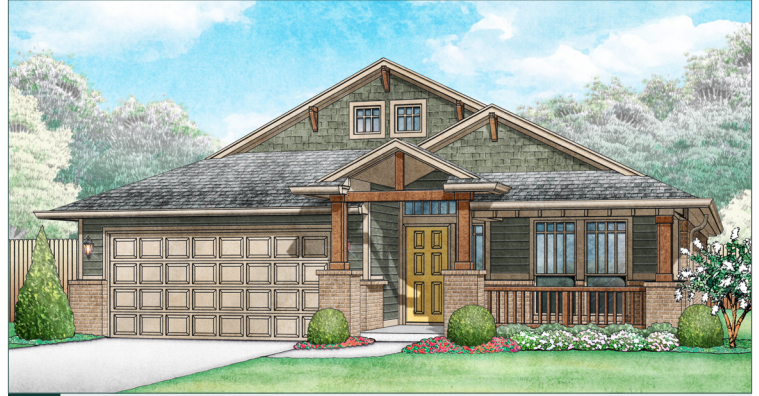


2 bath



a

farmhouse



b

craftsman



e

modern



f

modern

FEATURES YOU'LL LOVE ABOUT THIS HOME

quiet study split from the living space and bedrooms

spacious master bath with dual vanity

upscale treatment with vaulted ceilings

private but shared secondary bath with a Jack & Jill set up

an entertainer's kitchen with a bar top between the kitchen and breakfast area



IDEAL
homes | neighborhoods®



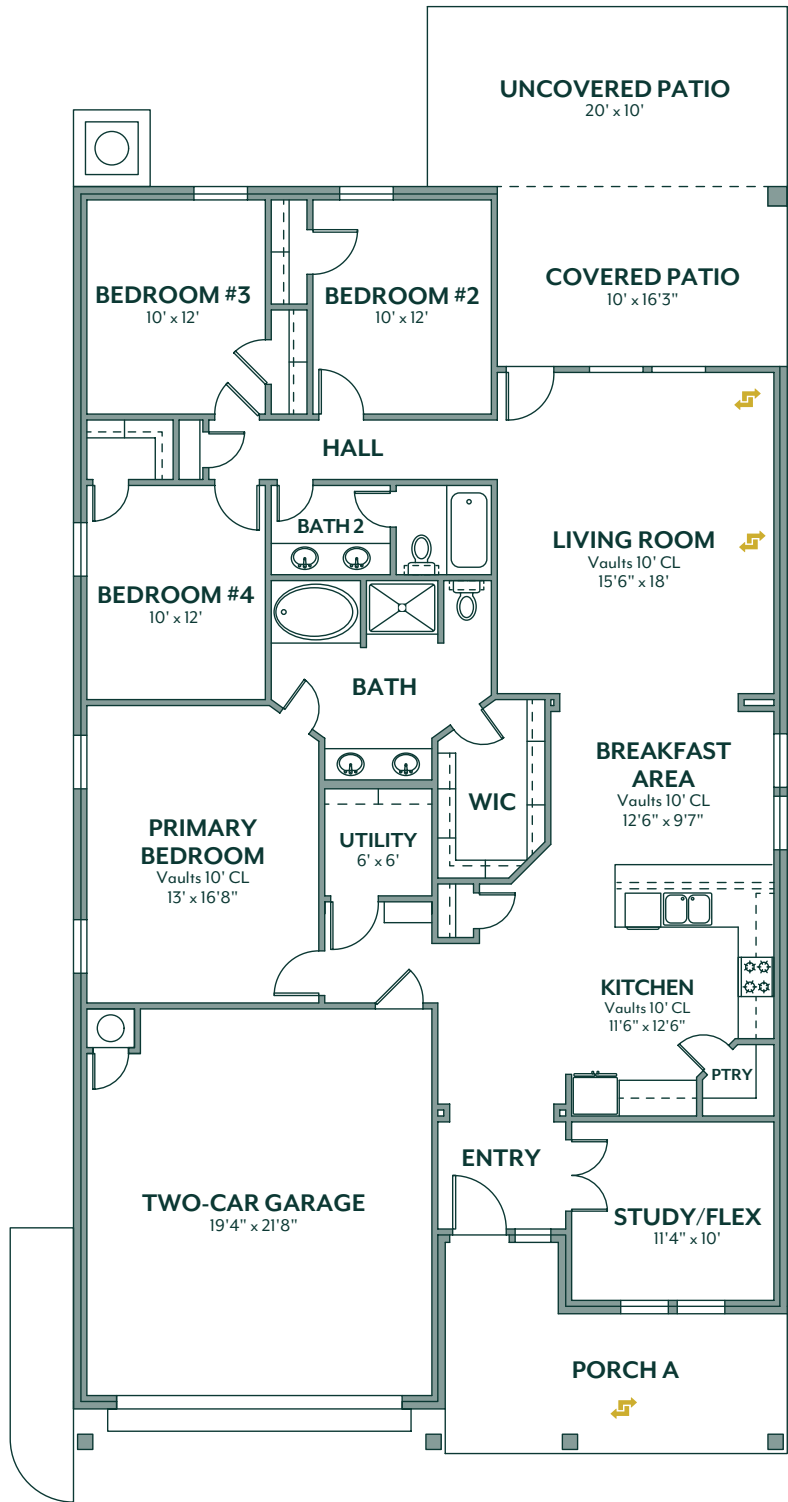
HERE'S HOW WE DEVELOP EVERY IDEAL FLOOR PLAN:

We consider everything ...

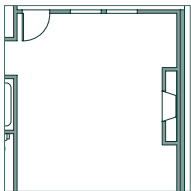
- sight lines & traffic flow
- furniture placement
- usable space
- architectural details
- window placement & size for optimal lighting
- function & low maintenance needs

405.364.1152

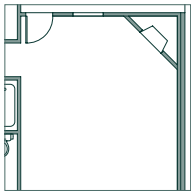
www.idealhomes.com



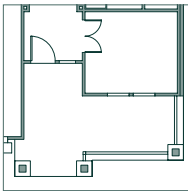
customize this plan



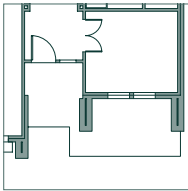
fireplace



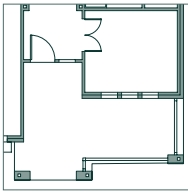
corner fireplace



porch b



porch e



porch f



Scan the code to view a photo gallery & included features for the Kensington floor plan