



Discover

# SMITH FARMS

---

NEW  
SINGLE FAMILY HOMES

MURFREESBORO, TN



A  COMPANY





# COMMUNITY VIDEO



CLICK TO VIEW VIDEO ON YOUTUBE!

SMITH FARMS  
—MURFREESBORO | TN—



# DISCOVER

## Smith Farms

---

Country living with room to breathe. Our single-family homes give you all the luxury features you need with plenty of room to spare. Nestled within the beautiful rural vistas of Murfreesboro, Tennessee, the Smith Farms community offers lovely open spaces and gorgeous walking trails that make getting out in nature as easy as walking out your back door. Space is the name of the game in all of our 3-6 bedroom floor plans, with available options like an oversized garage, extended covered patio, and dedicated media room. Every floor plan includes a spacious kitchen and dining area, roomy walk-in closets, and plenty of storage. When you're ready to get out and about, enjoy nearby Barfield Crescent Park, with its 430 acres of recreational space, including bike and running trails, a golf course, eight baseball fields, and more. The Smith Farms community is conveniently located, with lots of shopping and dining options nearby. And if you're looking for a night on the town, you're only 35 minutes away from downtown Nashville. Design your family's forever home. Talk to a New Home Consultant today!





# SMITH FARMS

—MURFREESBORO | TN—

## COMMUNITY FEATURES

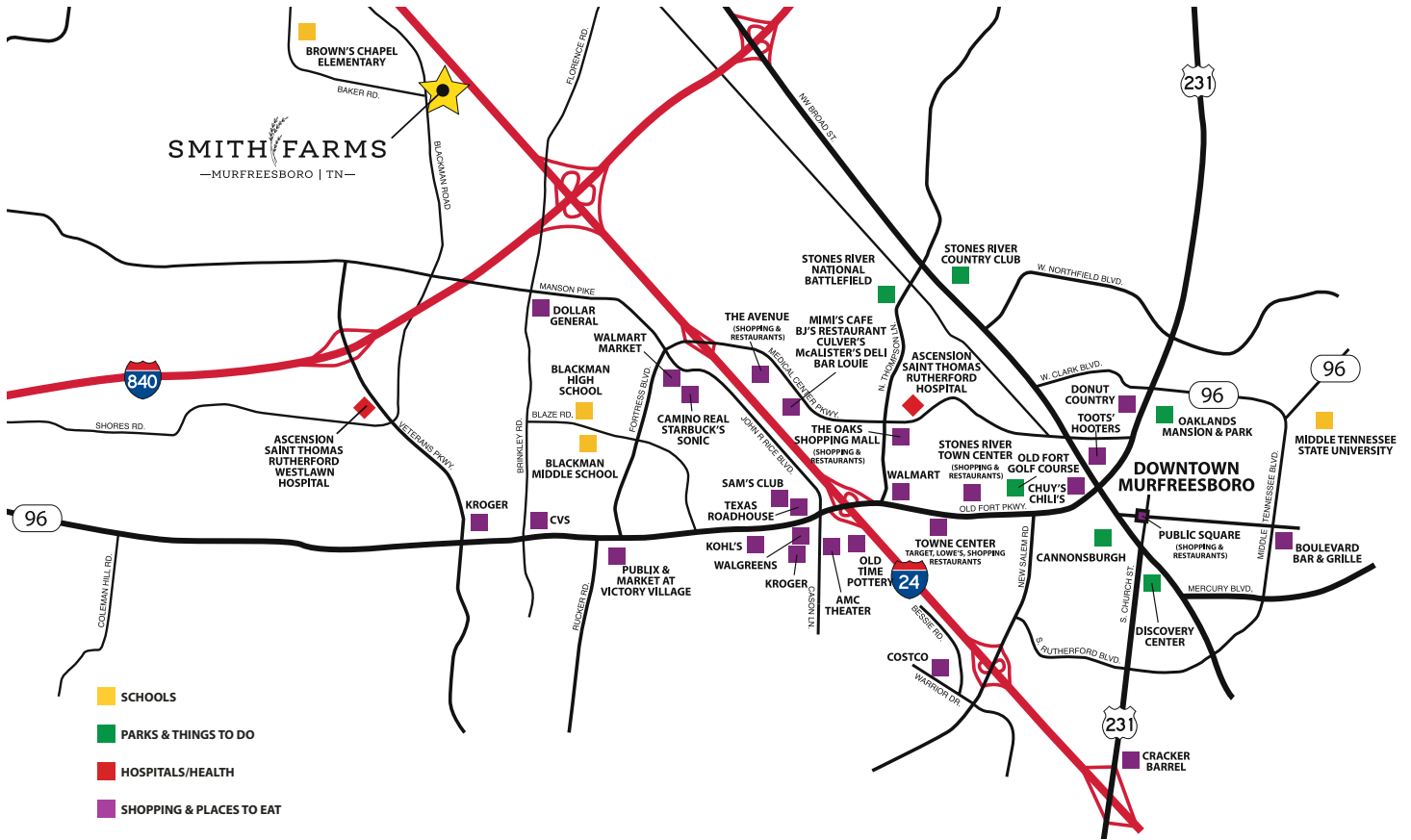
**Beautiful  
Streetscape**

**Floorplans to fit  
all Lifestyles**

**Walking  
Trails**



# AREA MAP



**SCHOOLS**

- Brown's Chapel Elementary
- Blackman Middle School
- Blackman High School
- Middle Tennessee State University

**PARKS & THINGS TO DO**

- Stones River National Battlefield
- Stones River Country Club
- Old Fort Golf Course
- Oaklands Mansion & Park
- Cannonsburgh
- Discovery Center

**HOSPITALS/HEALTH**

- Ascension St. Thomas Rutherford Westlawn Hospital
- Ascension St. Thomas Rutherford Hospital

**SHOPPING & PLACES TO EAT**

- Dollar General
- Walmart Market
- Camino Real
- Starbucks
- Sonic
- Sam's Club
- Texas Roadhouse
- Kroger
- CVS
- Publix & Market at Victory Village
- Kohl's
- Walgreens
- AMC Theater
- Old Time Pottery
- Costco
- The Avenue Shopping & Restaurants

- Mimi's Cafe
- BJ's Restaurant
- Culver's
- McAlister's Deli
- Bar Louie
- The Oaks Shopping Mall
- Stones River Town Center
- Towne Center: Target, Lowe's, Shopping, & Restaurants
- Cracker Barrel
- Chuy's
- Chili's
- Toots'
- Hooters
- Donut Country
- Boulevard Bar & Grille





# HOMESITE MAP


\*Masterplan Concept is subject to change based on single phase recorded plats.



# FLOORPLAN DETAILS

\*New home prices, included features, and available locations are subject to change without notice. Stated dimensions and square footage are approximate. Artist renderings are concept only. Photos and videos may be of model homes.

## SINGLE FAMILY HOMES

 **3-6 BR**     **2-4 BA**

 **1,765 to 2,846 SQ FT**

 **From the Mid \$400s**



**NOW SELLING NEW HOMES!**



Craftsman 2

# The Heartland



Homestead



Traditional 1

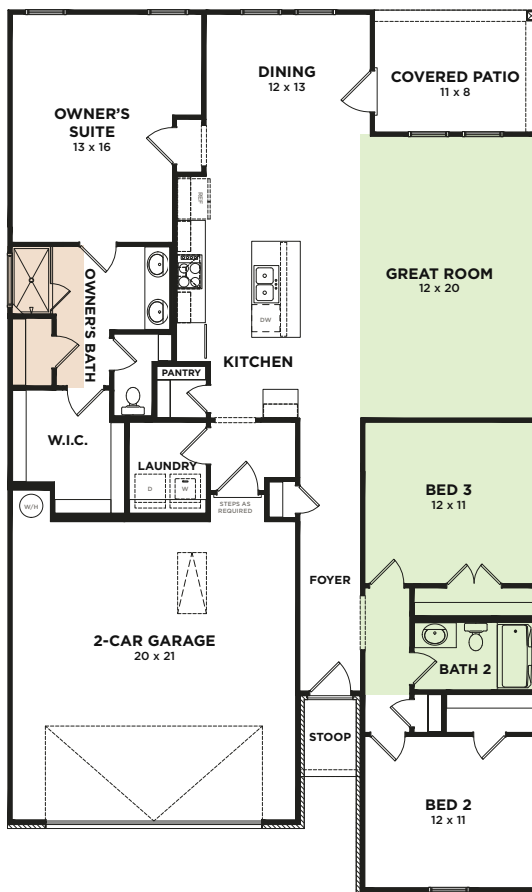
AT SMITH FARMS

1,765-2,220 SQ FT

3 BR

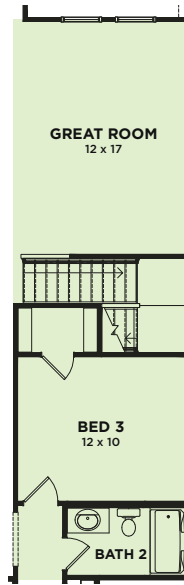
2 BA

## OWNER'S BATH OPTIONS

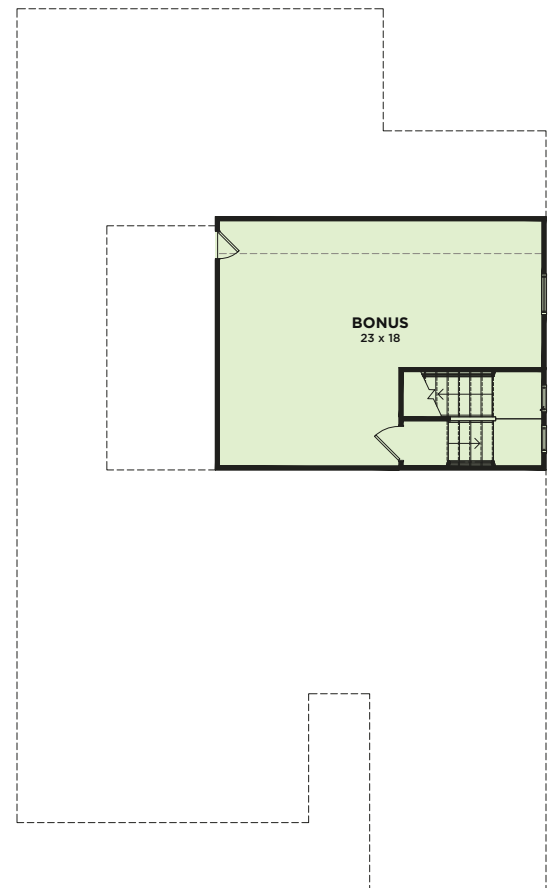


First Floor

## OPTIONAL



STAIRS TO OPTIONAL SECOND FLOOR



Optional Second Floor

Artist renderings are concept only. Photos and videos may be of model homes. New home prices, included features, and available locations are subject to change without notice. Elevation floor plans and options vary by community, Traditional Elevation shown above. All dimensions are approximate & rounded down to the nearest whole number for marketing content. See a New Home Consultant for more exact room dimensions and home details.





Elevation E

# The Stanford



Elevation H



Elevation F



Elevation G



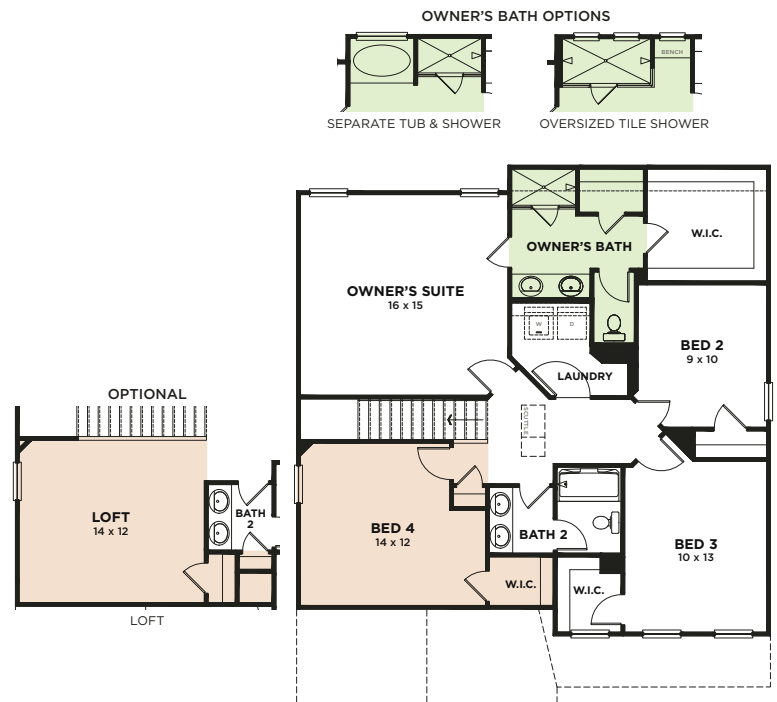
Elevation I

AT SMITH FARMS

 2,269 SQ FT  3-5 BR  2.5-3 BA



First Floor



Second Floor

Artist renderings are concept only. Photos and videos may be of model homes. New home prices, included features, and available locations are subject to change without notice. Elevation floor plans and options vary by community, Elevation A shown above. All dimensions are approximate & rounded down to the nearest whole number for marketing content. See a New Home Consultant for more exact room dimensions and home details.



Craftsman 2

# The Sutherland



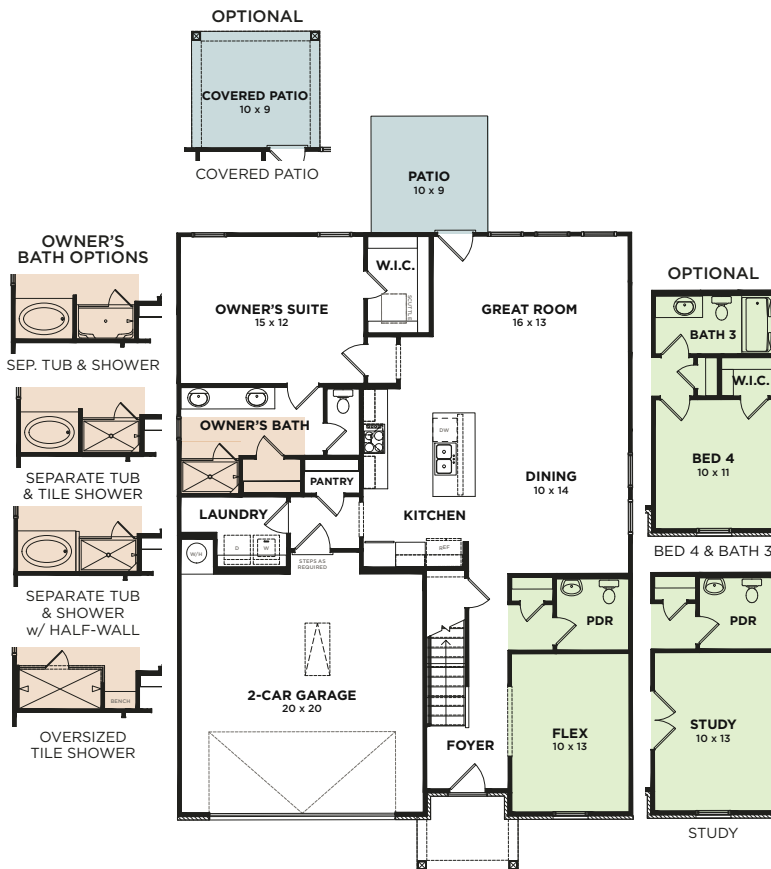
Homestead



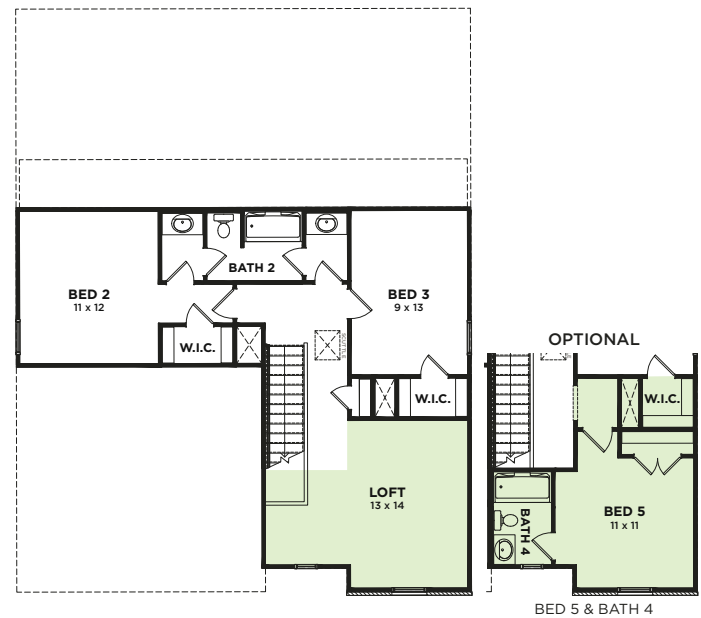
Traditional 1

AT SMITH FARMS

 **2,344 SQ FT**    **3-5 BR**    **2.5-4 BA**



First Floor



Second Floor

Artist renderings are concept only. Photos and videos may be of model homes. New home prices, included features, and available locations are subject to change without notice. Elevation floor plans and options vary by community, Traditional Elevation shown above. All dimensions are approximate & rounded down to the nearest whole number for marketing content. See a New Home Consultant for more exact room dimensions and home details.





Elevation C



+ 1 More Elevation! View on Our Website!



Elevation D



Elevation F



Elevation E



Elevation H

AT SMITH FARMS

2,584 SQ FT 3-5 BR 2.5-4 BA



First Floor



Second Floor

Artist renderings are concept only. Photos and videos may be of model homes. New home prices, included features, and available locations are subject to change without notice. Elevation floor plans and options vary by community, Elevation A shown above. All dimensions are approximate & rounded down to the nearest whole number for marketing content. See a New Home Consultant for more exact room dimensions and home details.



Elevation R

# The Colburn



Elevation K



Elevation M



Elevation Q

+ 7 More Elevations!  
View on Our Website!



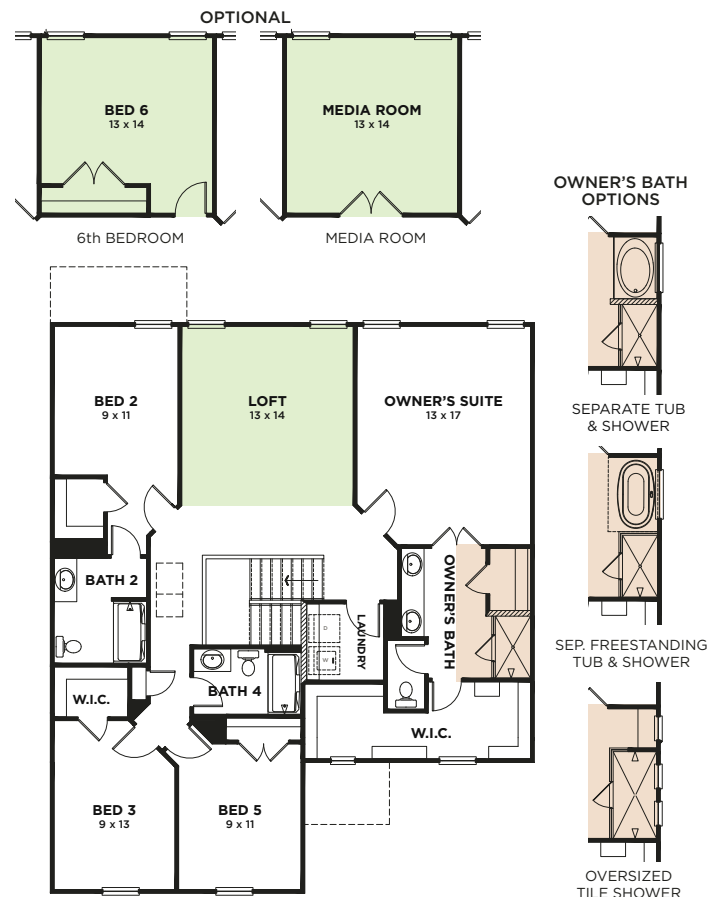
AT SMITH FARMS

2,846 SQ FT

5-6 BR 4 BA



First Floor



Second Floor

Artist renderings are concept only. Photos and videos may be of model homes. New home prices, included features, and available locations are subject to change without notice. Elevation floor plans and options vary by community, Elevation A shown above. All dimensions are approximate & rounded down to the nearest whole number for marketing content. See a New Home Consultant for more exact room dimensions and home details.



# ABOUT US

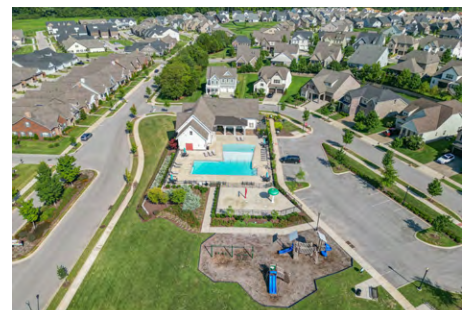
## Discover the Difference with a Hometown Builder

---

Founder, Bob Goodall, Jr., established Goodall Homes. Using the homebuilding knowledge he learned from his father, he set out to develop a unique style of homes and communities he hadn't seen being used yet in this area. While Goodall Homes began in 1983, we adapt to the times and different lifestyles around us. We have withstood the test of time and continue to grow!

We continue to thrive by sticking to our 6 Core Values: Glorify God by doing the right thing, Treat others like we want to be treated, Be humble. Relentlessly pursue improvement, Teach every team member to be a business owner. And finally, to build a positive team and family atmosphere. By living by these core values, we get to achieve our company's purpose every day: to create opportunities to improve the lives of our team members, business partners, and customers.

Throughout Nashville, Knoxville, and Southern Kentucky, Goodall Homes designs and builds single-family homes, townhomes, courtyard cottages, and villas — because we realize that “home” has its own meaning to you..... it's a 'lifestyle'. No matter what we build and where, every home that bears the Goodall name carries our pride in craftsmanship, meticulous attention to detail, and personal commitment to our homeowners.





# Mortgages. SIMPLIFIED.™



# FINANCING

## Goodall Homes and Silverton Mortgage are making Mortgages. Simplified.

Buying a home can be overwhelming. There are so many financing options, offered by so many different banks, lenders, and brokers. Don't stress yourself out trying to find the perfect product and perfect rate on your own – Our partner, Silverton Mortgage, can help guide you in the right direction.

## Financing Your Home

We're proud to partner with Silverton Mortgage, a leader in the home lending industry since its founding in 1998. Silverton Mortgage has been continually recognized for having some of the best customer satisfaction ratings in the mortgage community. Strong customer relationships are the foundation of Silverton's business. As Goodall's in-house lender, Silverton Mortgage is able to streamline communication to help borrowers smoothly navigate every stage of the mortgage process, all the way from application to closing. With Goodall Homes and Silverton Mortgage, you have a unified team working with one simple goal: to get you into the home of your dreams.

## Special Interest Rate Incentives

Silverton Mortgage and Goodall Homes partner to offer Special Incentives and Low-Interest Rate\* Options on select homes to well qualified customers. Check out our special incentives on our website or contact us TODAY!

\*Rates are not guaranteed and may vary depending on loan program, loan terms, daily rates, credit history and time of application. Other factor may apply.  
All trademarks are property of their respective owners.

**ALL LOANS ARE SUBJECT TO CREDIT APPROVAL**

Vanderbilt Mortgage and Finance, Inc., dba Silverton Mortgage, 1201 Peachtree St NE, Ste 2050, Atlanta, GA 30361, 404-815-0291, NMLS #1561, (<http://www.nmlsconsumeraccess.org/>), AZ Lic. #BK-0902616, Licensed by the Department of Financial Protection and Innovation under the California Residential Mortgage Lending Act license, Licensed by the N.J. Department of Banking and Insurance, Licensed by PA Dept. of Banking and Securities, Rhode Island Licensed Lender. Licensing information: <https://silvertonmortgage.com/licensing/>.

[CA Resident Privacy Policy](#) | [Clayton Homes](#) and [Legal and Privacy at Vanderbilt Mortgage and Finance \(vmf.com\)](#) | [Do Not Sell or Share My Personal Information](#)





# THE TEAM



**Lucas Munds**

New Home Consultant

615-200-5463 (Cell)

lmunds@newhomegroupn.com



**New Home Group Online Team**

New Home Specialists

615-703-5883

online@newhomegroupn.com



SOLD BY  
**NEW HOME GROUP**  
WELCOME HOME

New Home Group LLC #266481  
Broker #293693



**SMITH FARMS**  
—MURFREESBORO | TN—



DIRECTIONS

**MODEL HOME**



**3511 Elene Way  
Murfreesboro, TN 37129**

**Goodall  
HOMES**

A **Clayton** COMPANY

**GoodallHomes.com**

