

THE BAYSIDE SERIES

ASPEN

Ranch | 2 or 3 Bedrooms | 2 Full Baths



TRADITIONAL II



ENGLISH COLONIAL III



CLASSIC



COLONIAL II



CRAFTSMAN

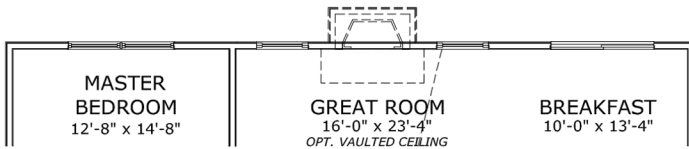


RUSTIC CRAFTSMAN

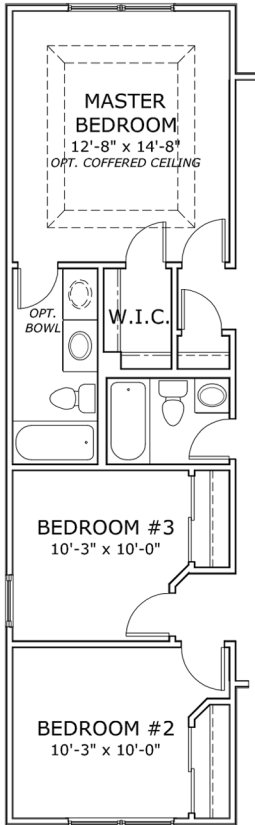


FARMHOUSE

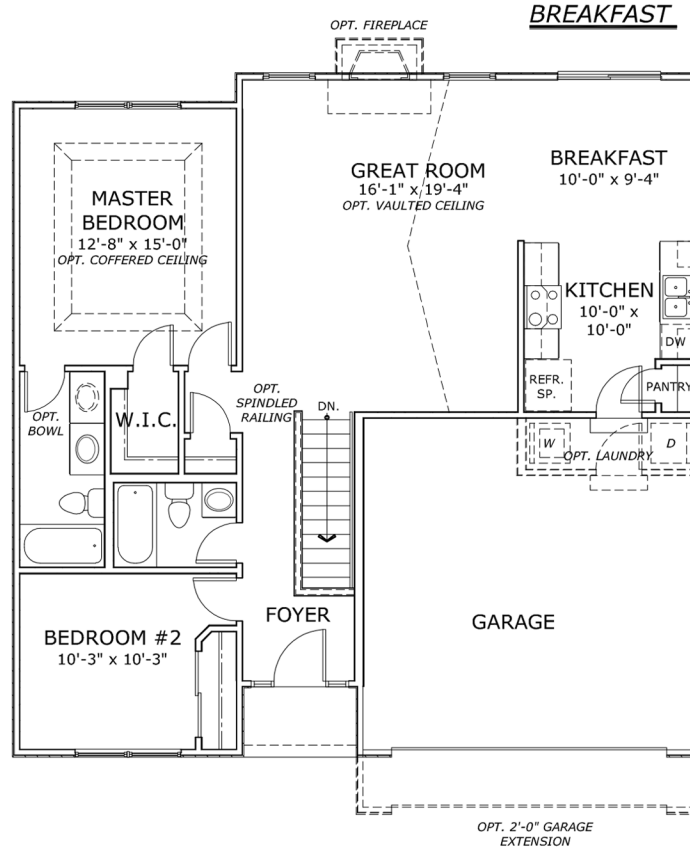

**MCBRIDE
HOMES**
Missouri's Largest Homebuilder



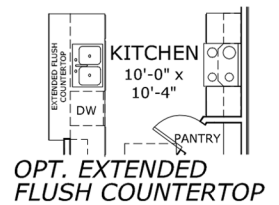
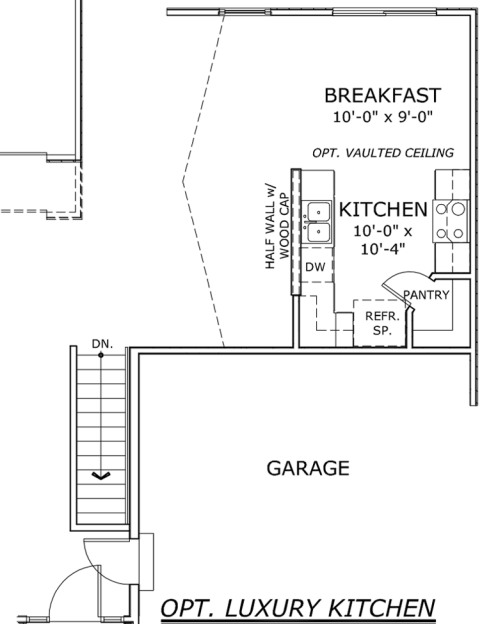
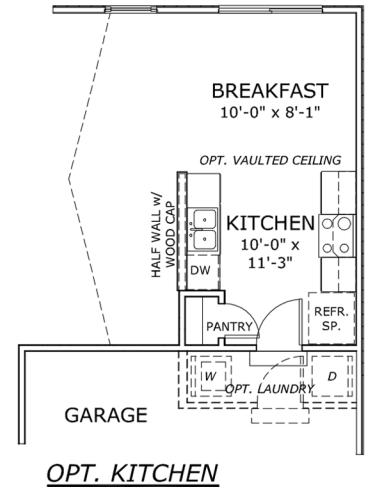
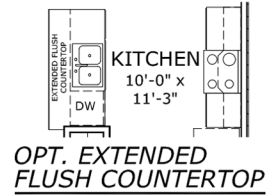
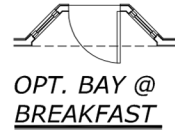
OPT. 4'-0" REAR EXTENSION
w/ 3 BEDROOM OPTION ONLY



OPT. 3 BEDROOM PLAN



FIRST FLOOR PLAN



BUILT BY McBRIDE & SON HOMES, INC.

* Due to the evolutionary changes in our design improvements process, there may be variations between these plans and the "as built" floor plans, including layout and room sizes, square footage of the residence itself, and the location and size of doors, windows, openings, door swings, and other building components, including the location of posts and beams.

McBride & Son Homes, in its sole and absolute discretion, reserves the right to substitute materials of comparable quality.

These plans are the sole and absolute property of McBride & Son Homes, Inc. The use or copying of these plans, without the express written consent of McBride & Son Homes, is prohibited by law. McBride & Son Homes may take immediate legal action against any unauthorized user of these plans.

