

REECE HOMES

4708 CORAL RIVER ROAD



GREENS PRAIRIE RESERVE NEIGHBORHOOD

4 BDRM | 3 BATH | 2410 SF

The new “Emily” plan lives large and flows beautifully. Included is the Reece Homes signature mudroom and a spacious laundry room that passes through to the master bedroom closet and bath. An open kitchen for all the cooks in your home overlooks the bright and airy living room.

Enjoy the beautiful outdoors this neighborhood has to offer while relaxing on the spacious covered patio.

FEATURES:

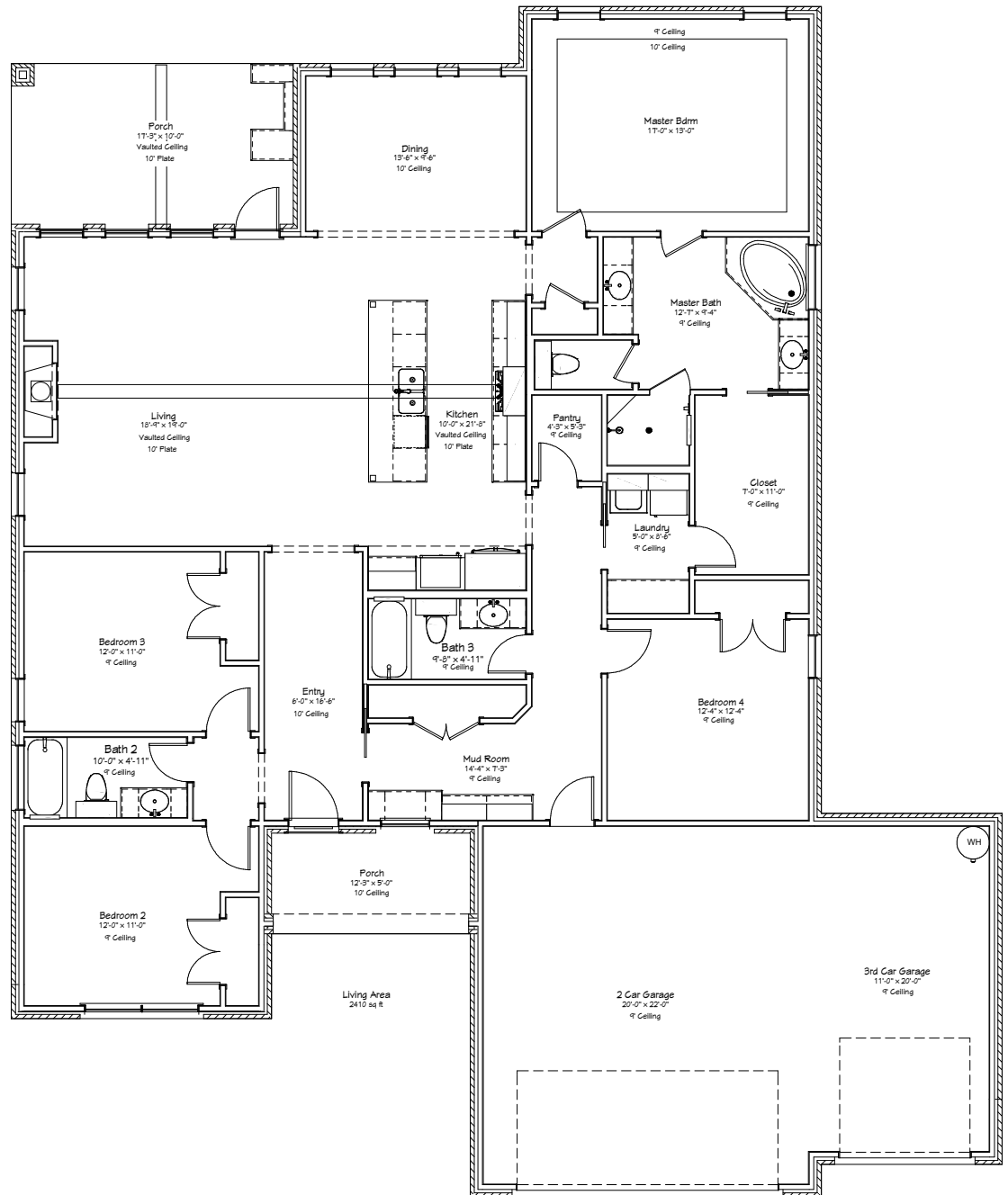
Custom Cabinetry | Quartz Countertops | Stainless Appliances
Engineered Hardwood Flooring | Outdoor Kitchen

Come Make Our House, Your Home.



Reece Homes
979-635-4800
info@reece-homes.com

4708 CORAL RIVER ROAD



4 BDRM | 3 BATH | 2410 SF

Built the way we live | At Reece Homes we take great care in personalizing every home to meet each family right where they are. Truly unique, the Reece Homes building experience provides in house drafting, personalized design assistance, and constant communication throughout construction.

WWW.REECE-HOMES.COM