



Features

- Nine foot first floor ceiling height
- Open floor plan
- Kitchen features island and walk-in pantry
- Large foyer
- Upper level laundry room
- Mudroom off garage
- Flex room for office, playroom, etc.
- Powder room
- Spacious primary bedroom suite includes walk-in closet and private bath
- Five foot by eight foot concrete patio

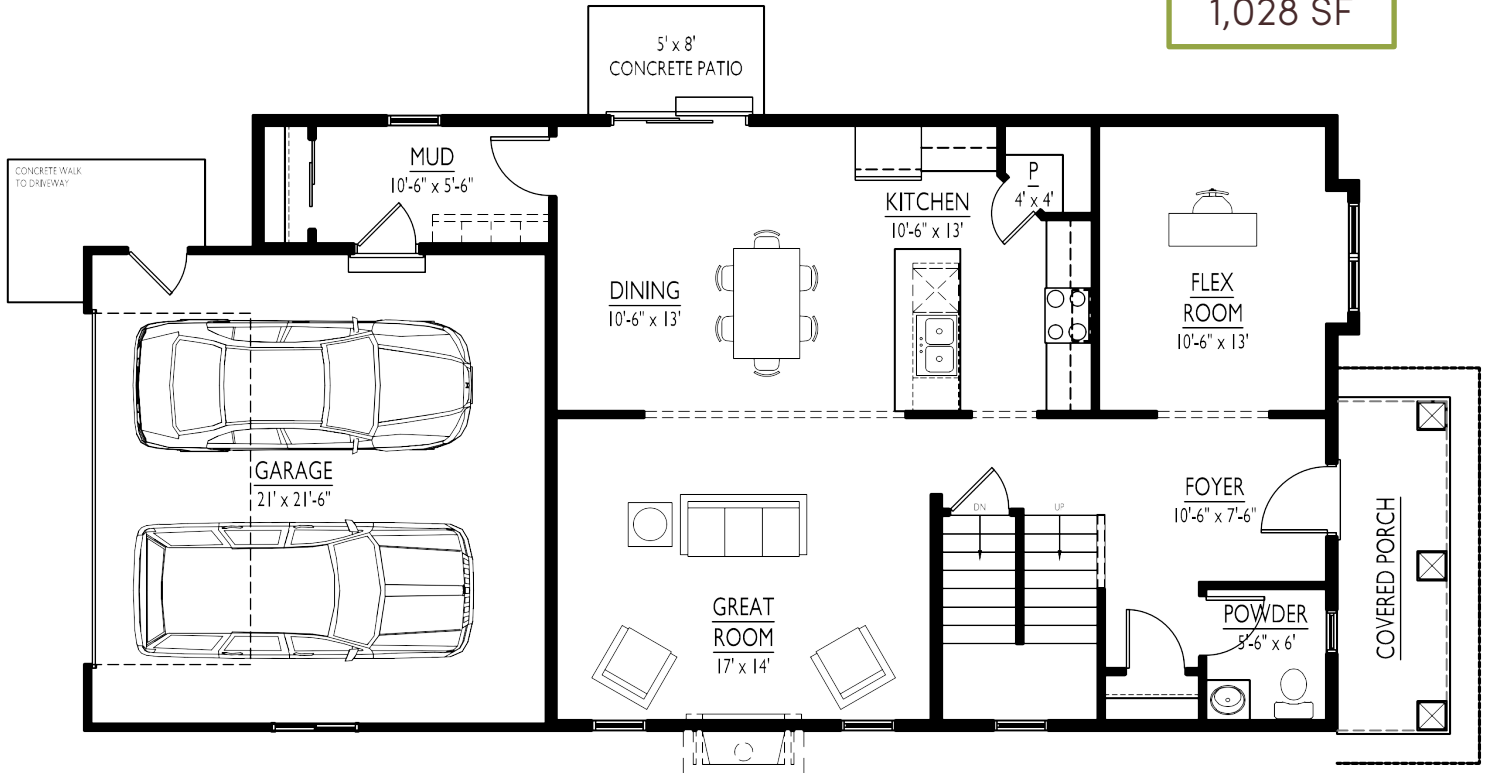
With a cute covered front porch AND a private patio off the dining area, this house offers so many options for enjoying the great outdoors. No matter how busy your day gets—work in the flex room, laundry to tend to, dinner to make in the gourmet kitchen—you'll always have an outdoor respite just steps away!



Options

- Eight foot nine inch basement foundation walls
- Fireplace in great room
- Tile shower in primary bathroom
- Upper wall cabinets and/or utility tub in laundry room
- Alternate main bath with privacy door
- Built-in cubbies in mudroom
- Finished deck or screened porch
- Finished lower level

1st Floor
1,028 SF



2nd Floor
1,085 SF

