

# DESIGN

CONROE - 5248



A



B



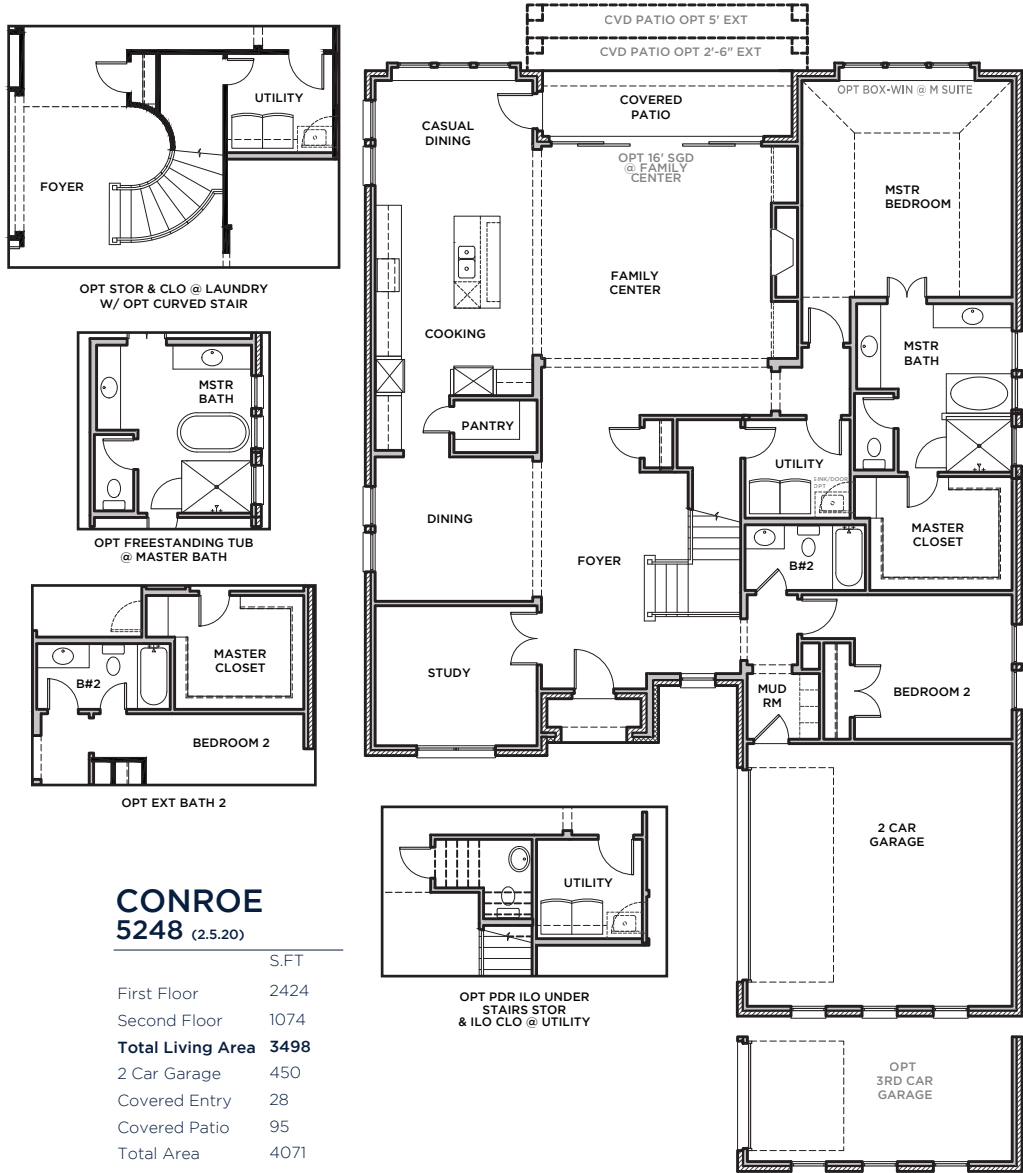
D



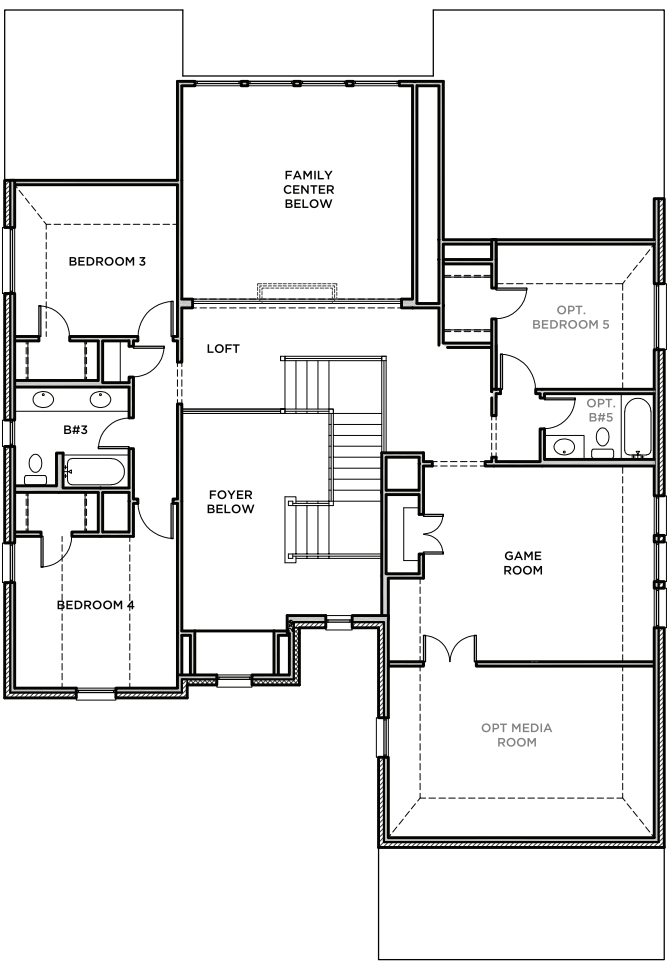
E



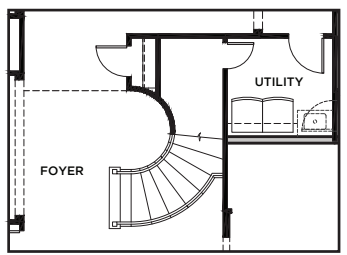
All Product including Architectural Designs, ©2000-2024, Shaddock Homes, LTD., All rights reserved. There may be existing or future design changes made in the floorplans, building products, methods, square footage, or designs used in our homes that are not reflected in our information, sales center or in our models. The materials, designs, square footages, features, and amenities shown are based upon current development plans, which are subject to change without notice. No guarantee is made that the designs, square footages, materials, features, and amenities depicted by artist's renderings or otherwise described will be built, or if built, will be of the same type, size or nature as depicted or described. All stone elevations, metal roofs, cast stone door and window headers and solid sawn cedar posts are optional, but available via change order. Front doors will match the specification sheet or chosen door upgrade. Prices and terms subject to change without notice. **REVISION DATE: 2.5.2020**



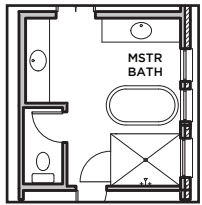
**FIRST FLOOR**



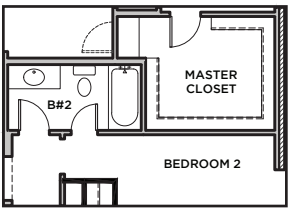
**SECOND FLOOR**



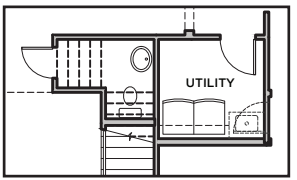
OPT STOR & CLO @ LAUNDRY  
W/ OPT CURVED STAIR



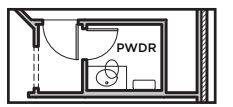
OPT FREESTANDING TUB  
@ MASTER BATH



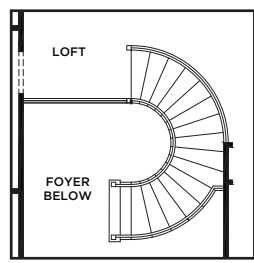
OPT EXT BATH 2



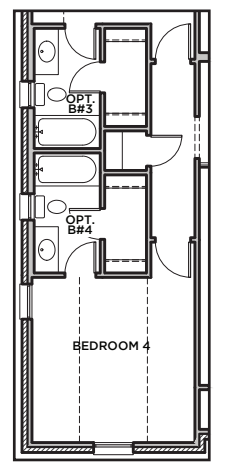
OPT PDR ILO UNDER  
STAIRS STOR  
& ILO CLO @ UTILITY



OPT PDR BATH



UPPER LEVEL  
OPT CURVED STAIR



OPT BATH 4

**CONROE  
5248 (2.5.20)**

	S.FT
First Floor	2424
Second Floor	1074
<b>Total Living Area</b>	<b>3498</b>
2 Car Garage	450
Covered Entry	28
Covered Patio	95
Total Area	4071

**Options**

Bed 5/Bath 4	235
Media Room	298
3 Car Garage	173
Bath 4	81

SHADDOCK HOMES