

REECE HOMES

2980 BOXELDER DRIVE



TRADITIONS NEIGHBORHOOD

4 BDRM | 3 BATH | 2610 SF

The “Elizabeth” floor plan is one of the most popular Reece Homes layout with its perfect combination of functionality and design. The game room, outdoor kitchen and Reece Homes’ signature mudroom makes sure that this home checks every box. A beautiful u-shaped kitchen with a large island and a wall of windows looking out into the front, expand the feel of this plan. A restful master suite and large closet make this home a dream for everyone!

FEATURES:

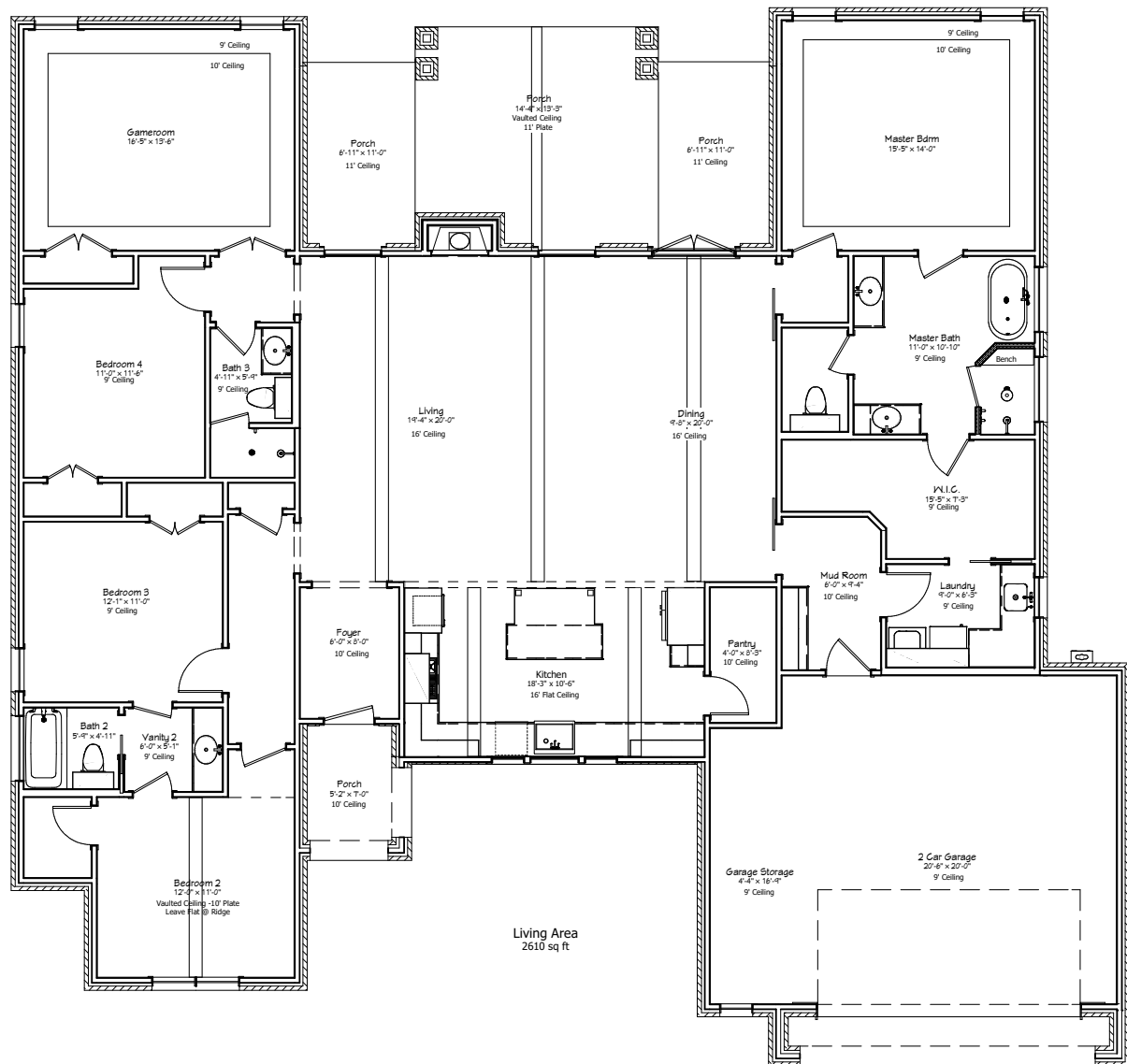
Custom Cabinetry | Dolomite Countertops
Hardwood Flooring | Stainless Appliances | Custom Design Elements

Come Make Our House, Your Home.



Reece Homes
979-635-4800
info@reece-homes.com

2980 BOXELDER DRIVE



4 BDRM | 3 BATH | 2610 SF

Built the way we live | At Reece Homes we take great care in personalizing every home to meet each family right where they are. Truly unique, the Reece Homes building experience provides in house drafting, personalized design assistance, and constant communication throughout construction.

WWW.REECE-HOMES.COM