

# PIERRE'S BAY \$734,900

2214 Calm Waters Drive, Leland, NC 28451  
TERRAPIN

KENT *homes*  
A SMARTER WAY TO A LUXURY HOME



Renderings are for illustrative purposes only.  
Actual materials, colors, finishes, and details may vary.

## EFFORTLESS COASTAL LIVING

Welcome to effortless coastal living by Kent Homes in the new Terrapin community—where comfort meets thoughtful design. This beautifully crafted 3-bedroom, 3.5-bath home offers a light-filled, airy feel with a charming bay window in the dining room, perfect for slow mornings or sunset dinners. Inside, you'll find elevated finishes like quartz countertops in the kitchen and throughout the bathrooms, adding a clean, sophisticated touch. A bonus room offers flexibility for entertaining or relaxing after a day by the coast. Your laid-back coastal retreat awaits!

Ready to see it for yourself? Call us today to schedule your virtual or in-person tour today!

\*Summer Completion

3 BEDROOM  
3.5 BATHROOM  
2,663 SQ. FT.  
**+ BONUS ROOM  
& STUDY**

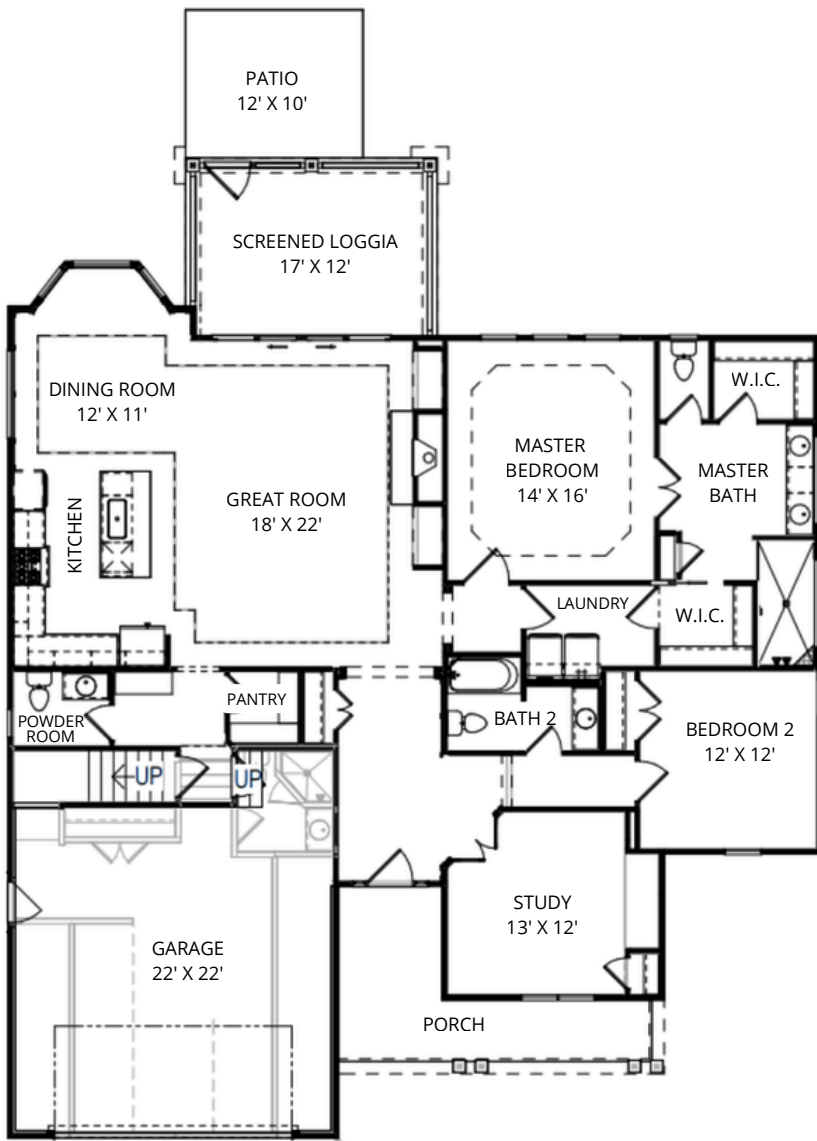
12 Month Leaseback  
Opportunity!



Contact:

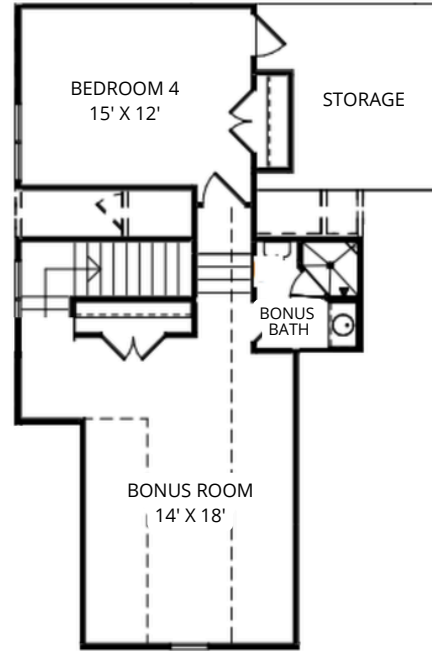
KATE DASILVA  
KATE@KENTHOMES.NET  
910.742.5736  
KENTHOMES.NET





*Spacious Layout*

2,663 heated sq ft  
 522 garage sq ft  
 367 covered outdoor living sq ft  
 House Dimensions:  
 55'(W) - 59' 2" (L)



*Structural Options & Upgrades*

- Elevation B2
- Finished Bonus Room & Full Bath
- Finished 4<sup>th</sup> Bedroom
- Change Bedroom 3 to a Study
- Bay Window in Dining Room
- Garage Convenience Door
- Laminate Flooring in Master Bedroom
- Modify Pocket office into Powder Room

*Color Palette*



**KENT** *homes*

A SMARTER WAY TO A LUXURY HOME

**Pricing subject to change at anytime and without notice.**

Any drawings and square footage notations are approximate and are only to be used for reference. They should not be relied upon as representations, expressed or otherwise, of the final detail of your home.

Rev. 4.2.26  
 2214 Calm Waters Drive