

D / MODERN



E / TRANSITIONAL



D / MODERN



*Not all elevations are available in all communities.

About This 2-Story, Slab Home



2 Beds



2 ½ Baths



1,225 sqft

The Telluride is a 2-bedroom, 2.5-bathroom home that blends modern design with everyday practicality across 1,225 square feet. The open-concept kitchen and living area is designed for comfortable living and easy entertaining. Upstairs, the owner's suite features a private en-suite bathroom and closet, while the second bedroom offers flexibility for guests, family, or a home office. A convenient powder room on the main level adds functionality, and xeriscape landscaping provides outdoor enjoyment with minimal upkeep. A detached garage enhances curb appeal while offering secure parking and extra storage. Connect with your Community Sales Manager for more details.

Telluride

INSPIRE SERIES / 705

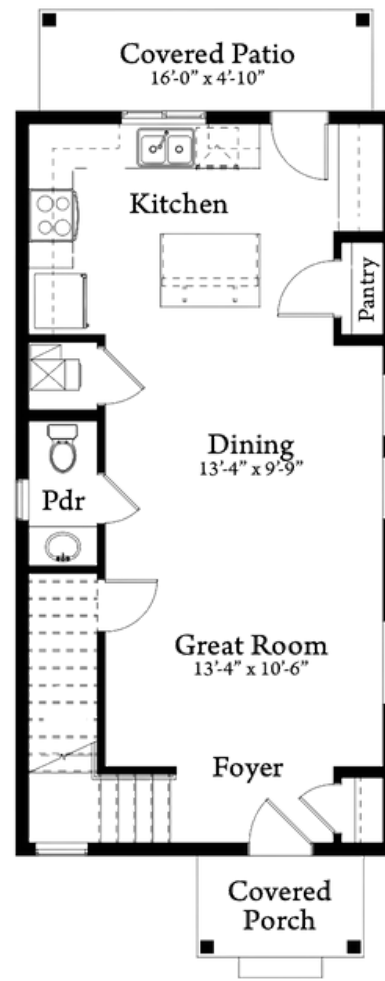
- Total Finished - 1,225 sq. ft.
- Slab on Grade Product
- 0, 1, or 2 Car Garage
- Fencing and Xeriscaping included

Available Upgrades*

Please see your Community Sales Manager for an updated list of available upgrades.

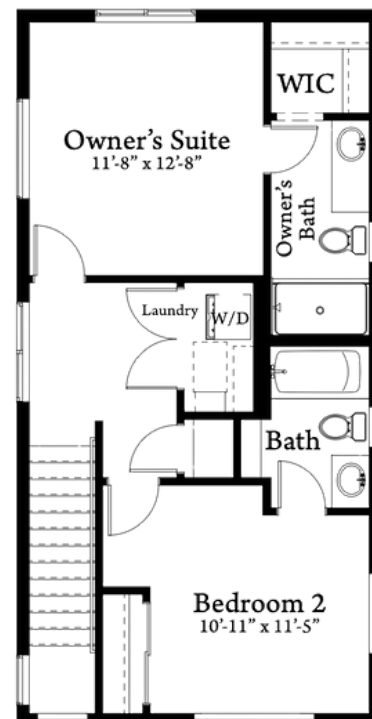
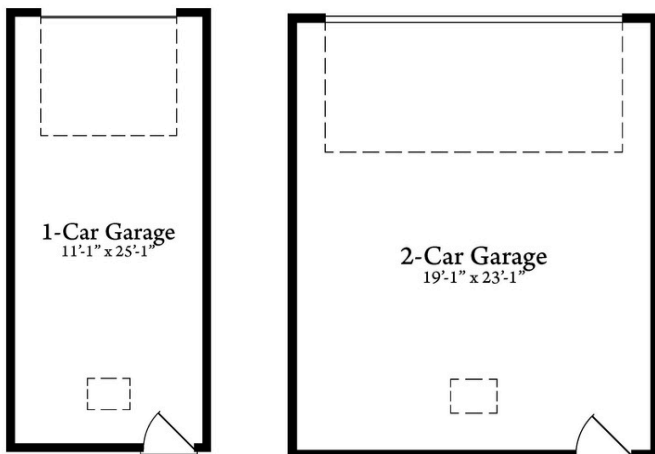


Scan to learn more



Garage Options

OPTIONAL UPGRADES



Builder reserves the right to modify or change floor plans, features, and pricing without notice. All floor plans and renderings are conceptual in nature and may vary from actual homes. Square footages are approximate and may vary. Not all options and elevations offered in every community. Last updated 9/23/25.