

Murphy



2,136 sq ft



3 bed

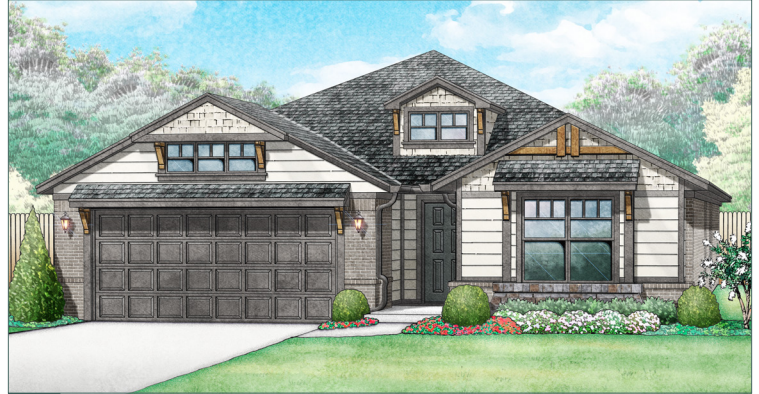


2 bath



a

craftsman



b

mountain cottage



f

modern

FEATURES YOU'LL LOVE ABOUT THIS HOME

mudroom with access to the garage and the front door

open layout with architecturally defined spaces

walk-in pantry to maximize kitchen organization

secluded study/flex space with option to replace with a fourth bedroom

master suite with vaulted ceiling, large walk-in closet, and options to customize



IDEAL
homes | neighborhoods®



HERE'S HOW WE DEVELOP EVERY IDEAL FLOOR PLAN:

We consider everything ...

- sight lines & traffic flow
- furniture placement
- usable space
- architectural details
- window placement & size for optimal lighting
- function & low maintenance needs

405.364.1152

www.idealhomes.com



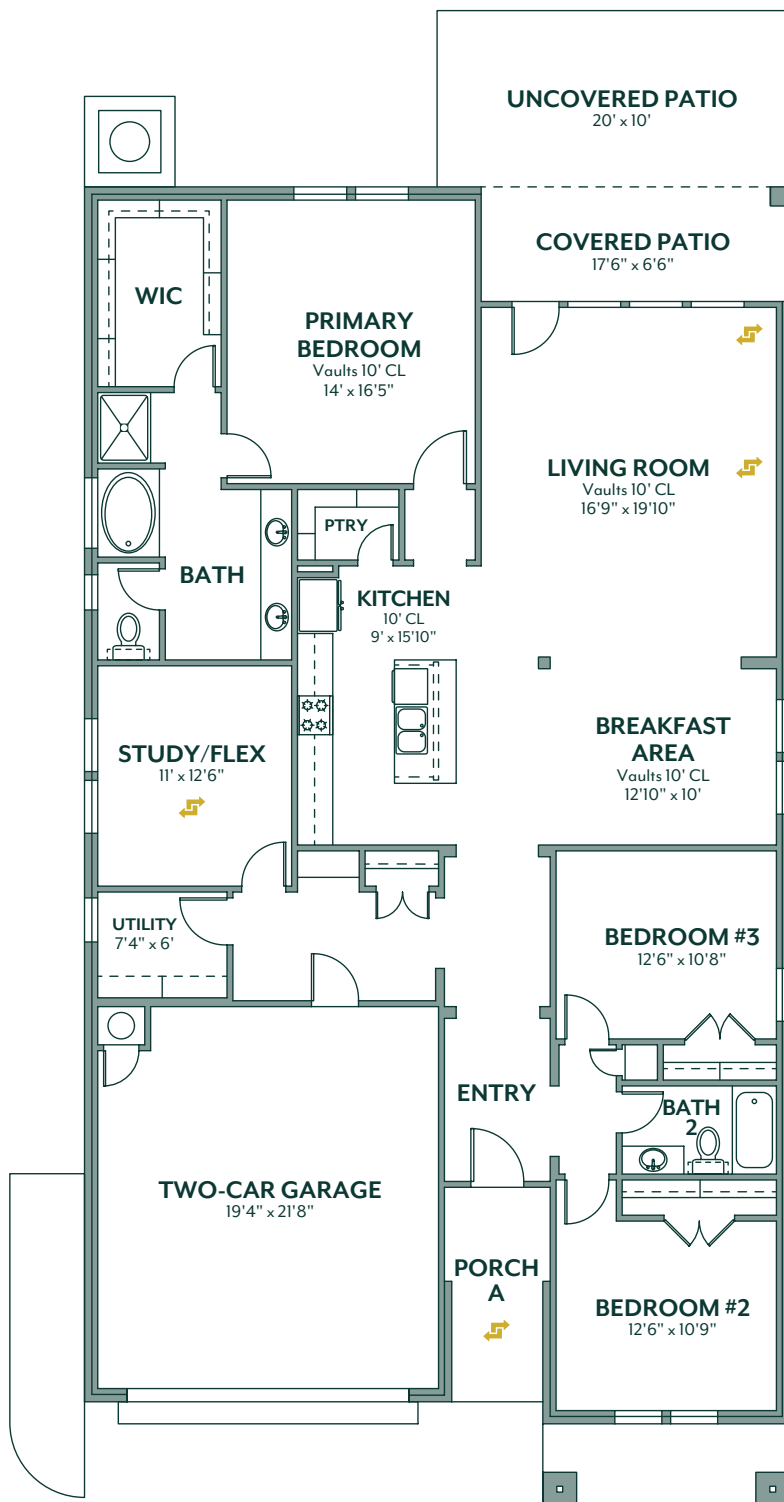
2,136 sq ft



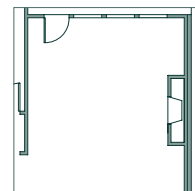
3 bed



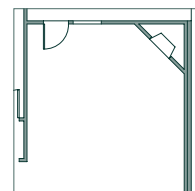
2 bath



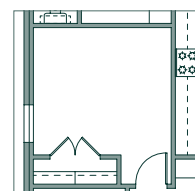
✓ customize this plan



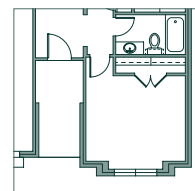
fireplace



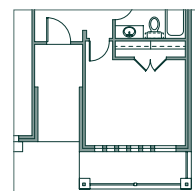
corner fireplace



bedroom #4
ILO study



porch b



porch f



Scan the code to view a **photo gallery & included features**
for the Murphy floor plan