

# DESIGN

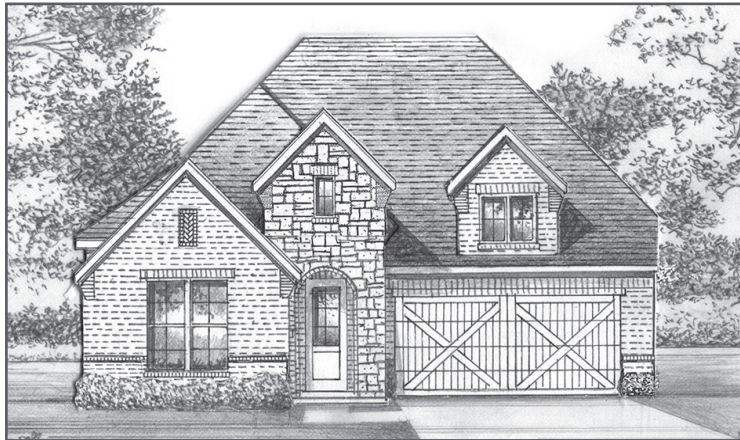
BARTON - 4441ps



SHADDOCK  
—HOMES—



A



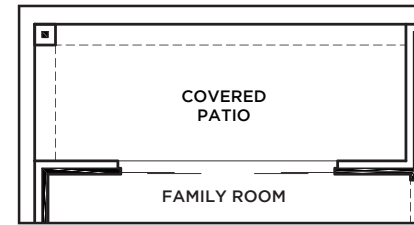
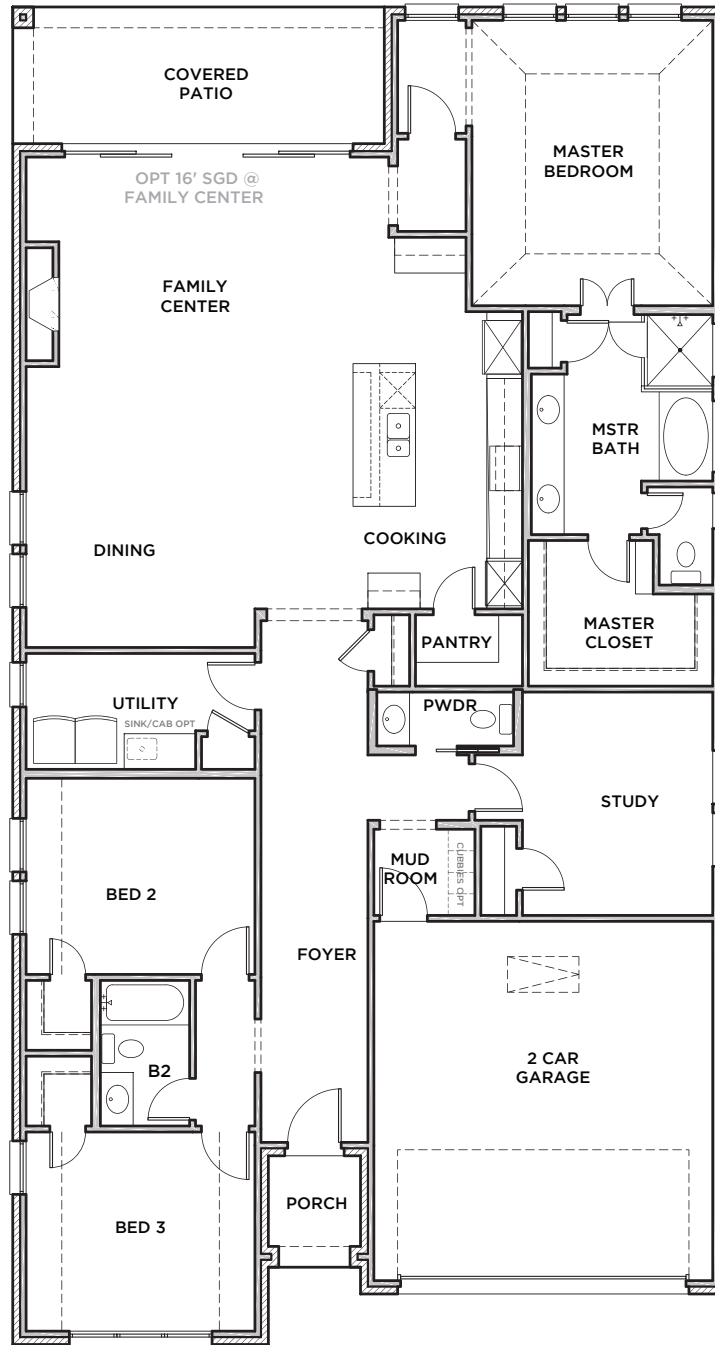
B



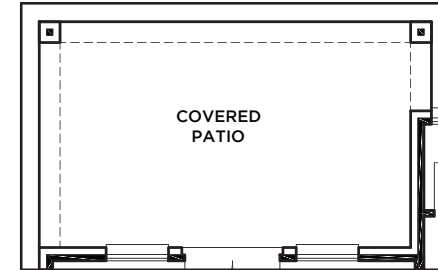
C



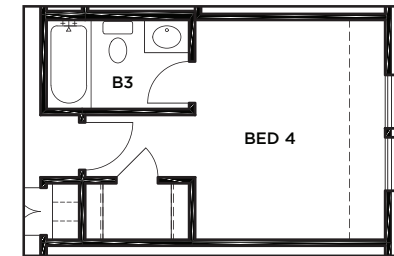
All Product including Architectural Designs, ©2000-2020, Shaddock Homes, LTD. All rights reserved. There may be existing or future design changes made in the floorplans, building products, methods, square footage or designs used in our homes that are not reflected in our information, sales center or in our models. The materials, designs, square footages, features and amenities shown are based upon current development plans, which are subject to change without notice. No guarantee is made that the designs, square footages, materials, features and amenities depicted by artist's renderings or otherwise described will be built, or if built, will be of the same type, size or nature as depicted or described. All cedar, stone and metal roofs are optional and available via change order. Prices and terms subject to change without notice. **REVISION DATE: 10.25.2018**



OPT 12' SGD @  
FAMILY CENTER



OPT EXT CVD  
PORCH



OPT BED 4 & BATH 3  
ILO STUDY/POWDER

**BARTON**  
**4441PS** (10.25.18)

	S.FT
First Floor	2308
<b>Total Living Area</b>	<b>2308</b>
2 Car Garage	419
Covered Porch	32
Covered Patio	160
Total Area	2919

**Options**

Ext. Covered Patio	110
--------------------	-----

SHADDOCK HOMES