

DESIGN

SABINE - 8316



SHADDOCK
—HOMES—



A



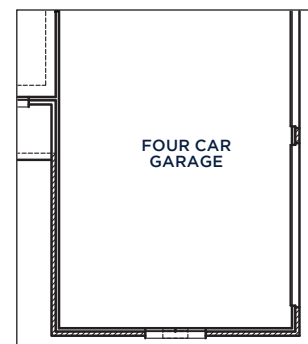
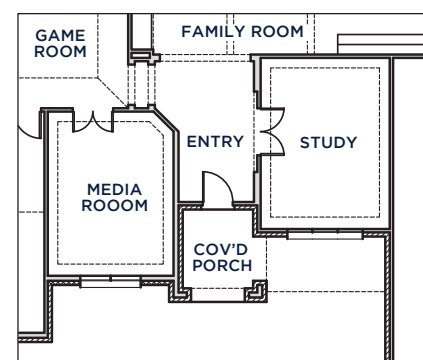
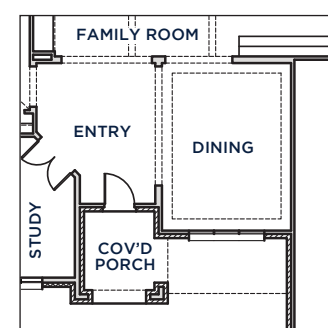
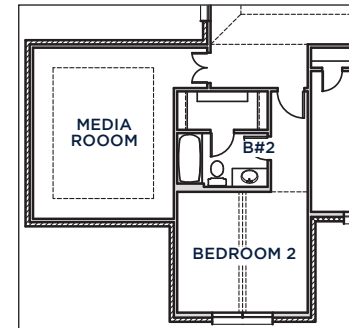
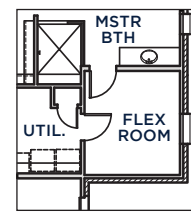
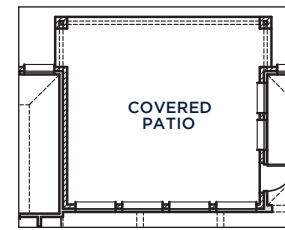
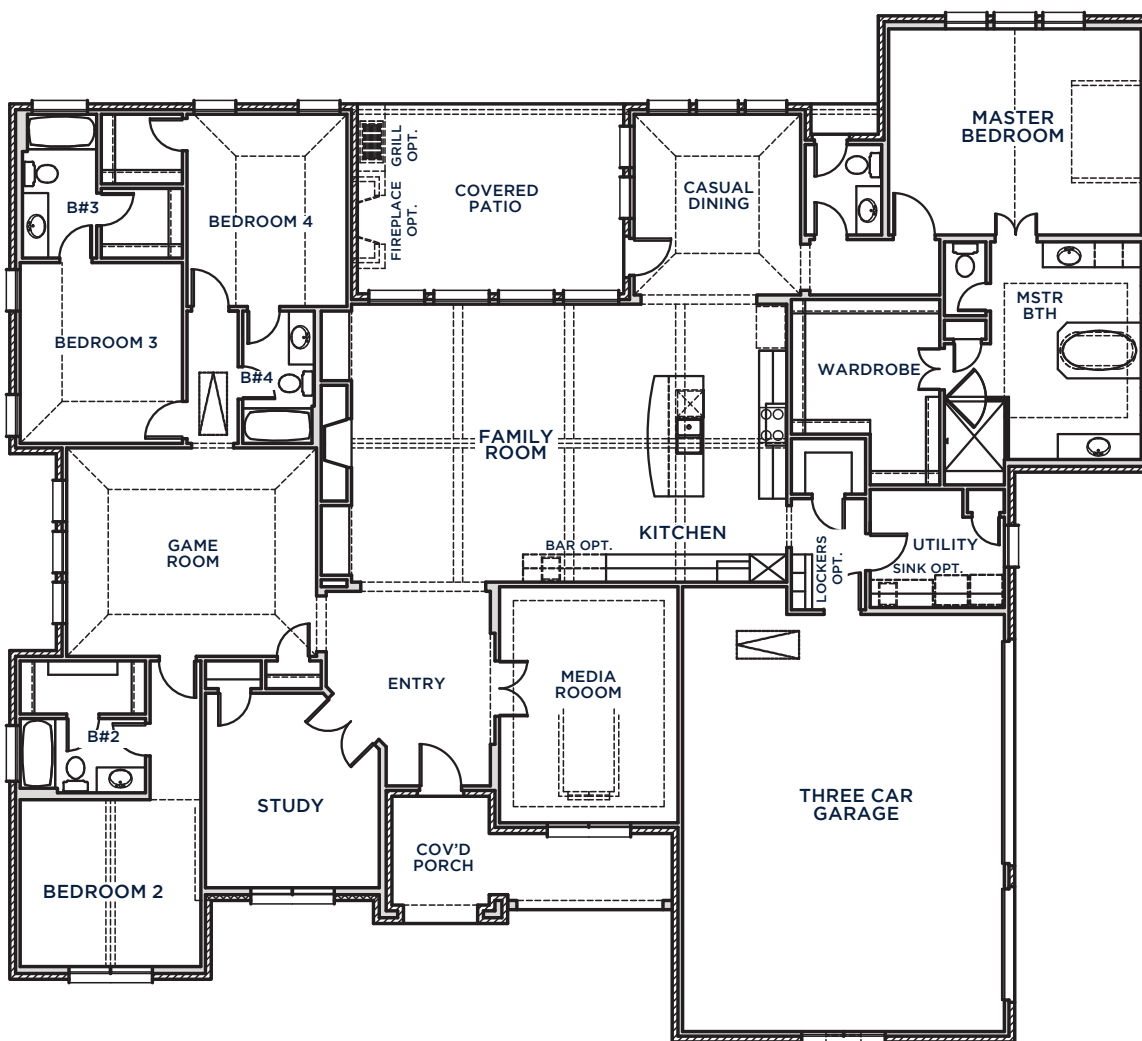
B



C



All Product including Architectural Designs, ©2000-2023, Shaddock Homes, LTD., All rights reserved. There may be existing or future design changes made in the floorplans, building products, methods, square footage, or designs used in our homes that are not reflected in our information, sales center or in our models. The materials, designs, square footages, features, and amenities shown are based upon current development plans, which are subject to change without notice. No guarantee is made that the designs, square footages, materials, features, and amenities depicted by artist's renderings or otherwise described will be built, or if built, will be of the same type, size or nature as depicted or described. All stone elevations, metal roofs, cast stone door and window headers and solid sawn cedar posts are optional, but available via change order. Front doors will match the specification sheet or chosen door upgrade. Prices and terms subject to change without notice. **REVISION DATE: 10.24.19**



SABINE
8316 (10.24.19)

	S.FT
First Floor	3668
Total Living Area	3668
3 Car Garage	762
Covered Porch	140
Covered Patio	262
Total Area	4842
Options	
Media Room	328
4th Car Garage	197
Extended Patio	108

SHADDOCK HOMES