

The Delano



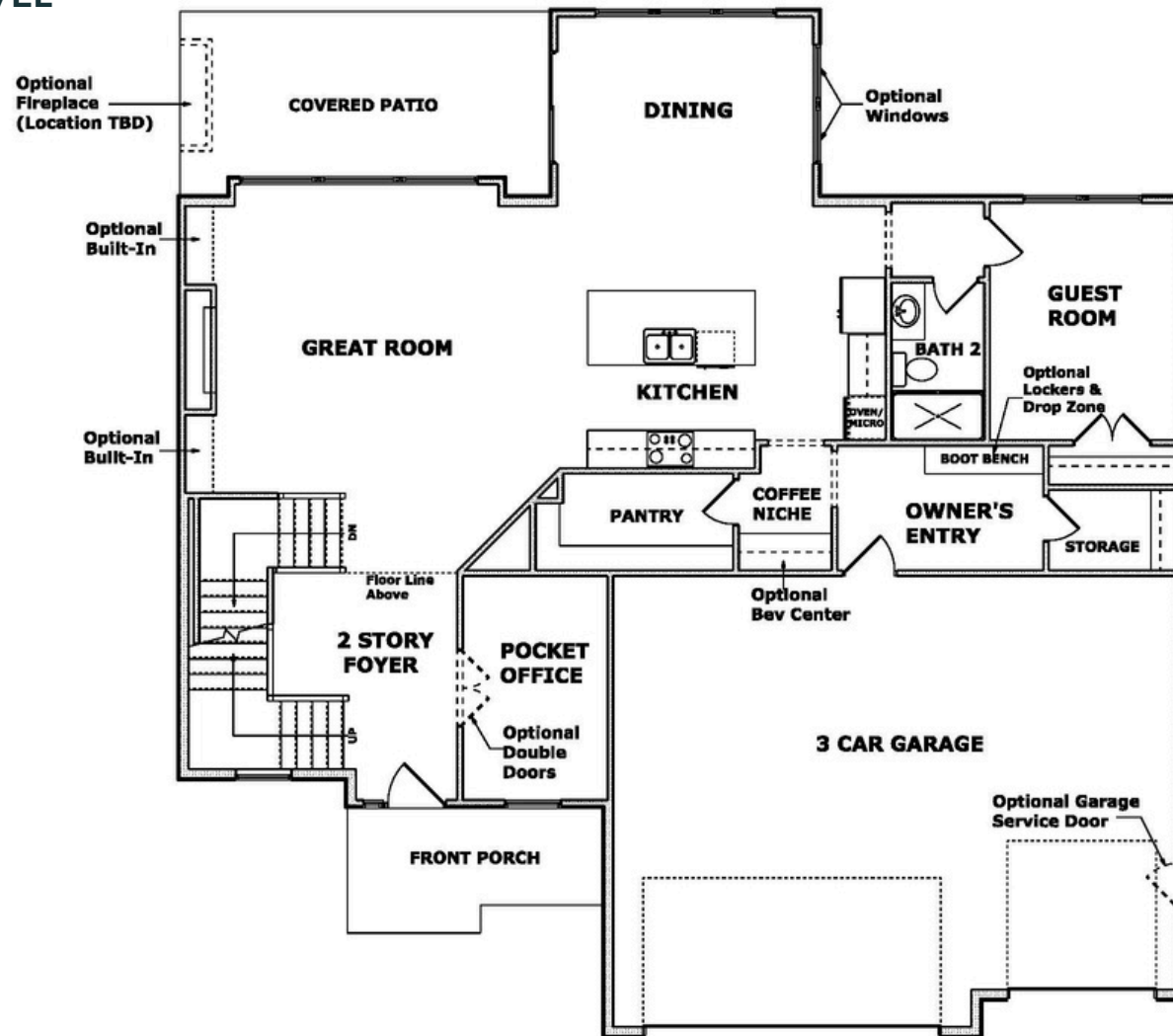
Craftsman



Modern Euro

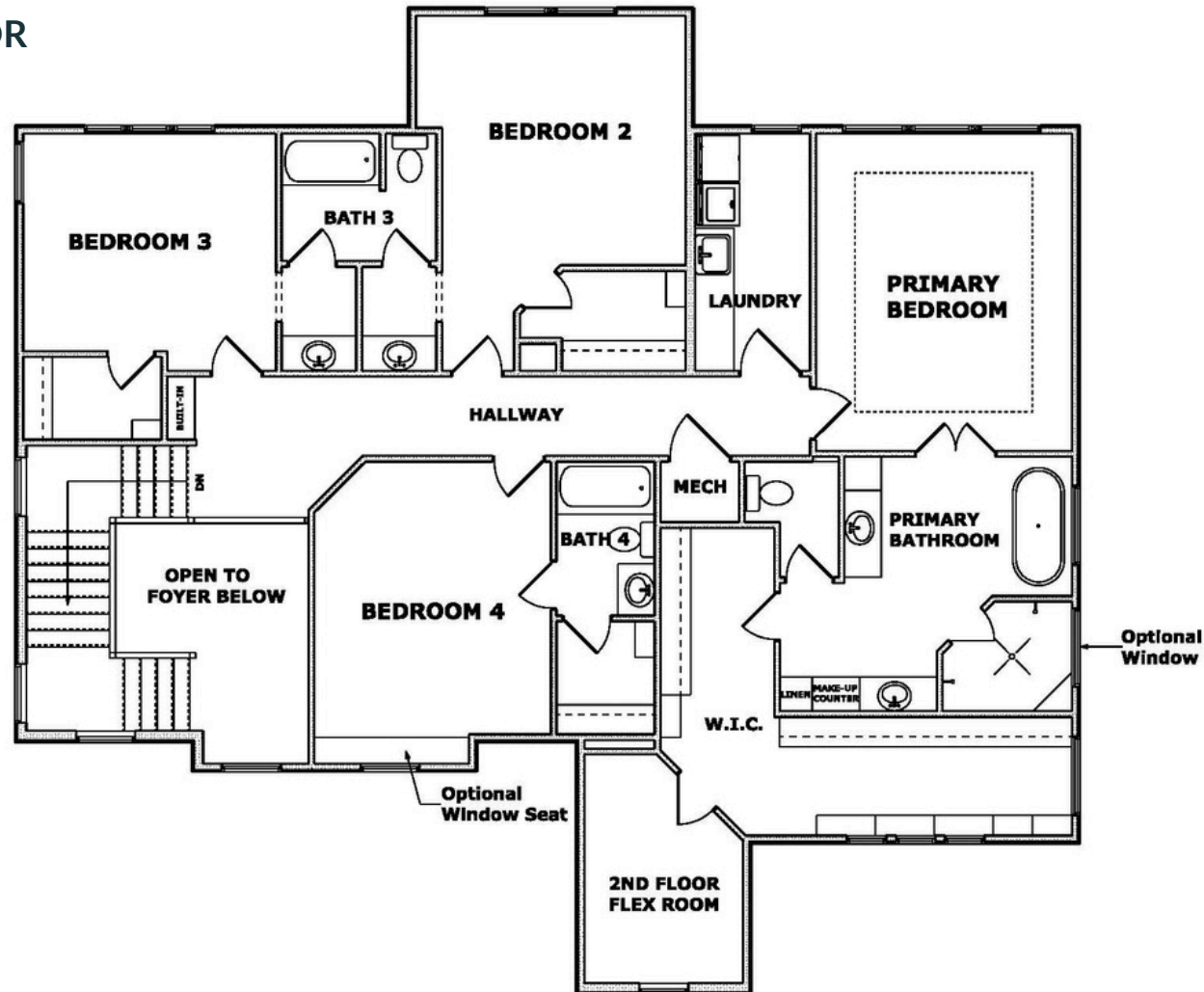
The Delano

MAIN LEVEL



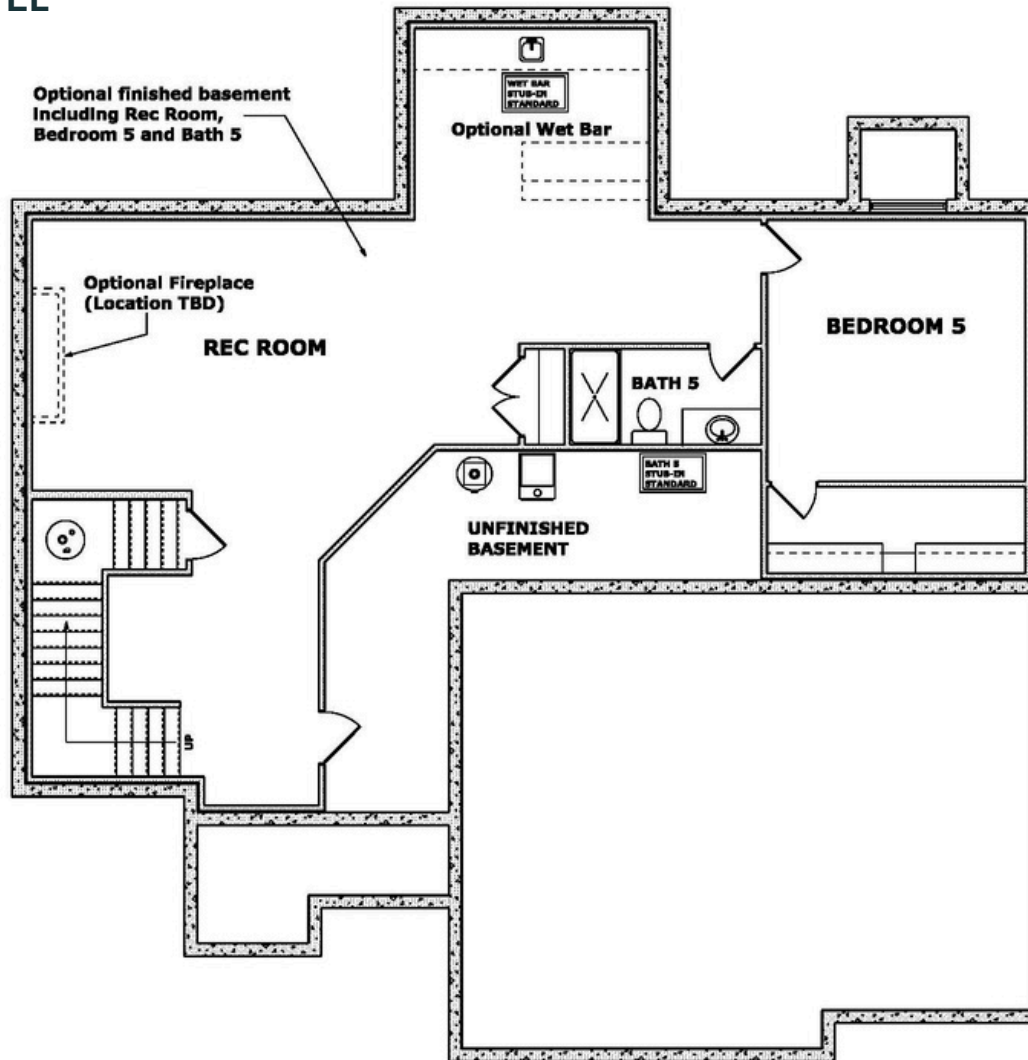
The Delano

SECOND FLOOR



The Delano

OPTIONAL LOWER LEVEL



Get more with Inspired Homes...

Plans: Windsor, Delano, Glenwood, Opus II

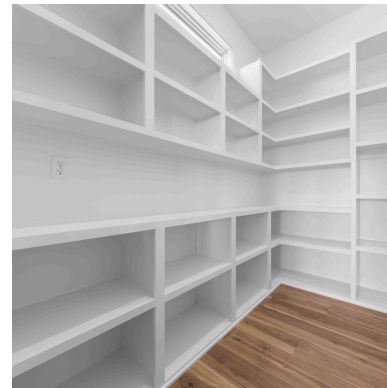
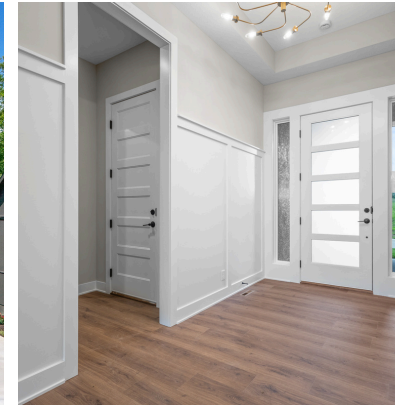
STANDARD FEATURES

KITCHEN

- Built-in GE® stainless steel appliances:
 - Gas cooktop, Wi-Fi-enabled built-in oven, built-in microwave, upgraded dishwasher with 3rd tray/SS interior
- Custom site-finished wood cabinetry with soft close drawers/doors
- Choice of enameled or stained cabinetry
- Under cabinet LED lighting with switch
- Tile backsplash
- Trash/recycle pull-out with bins
- Sil-Composite undermount sink
- Oversized island
- USB outlet
- Granite countertops (kitchen & bath)

INTERIOR FEATURES

- 8' "Level 1" interior doors (main floor)
- Boot bench with open cubbies and hooks
- Wide plank premium laminate flooring on main level traffic areas
- Gas fireplace with blower and battery back-up
- Approx. 10' ceilings on first floor (Plan specific)
- Tray ceiling in primary bedroom, Great Room (Plan specific)
- Approx. 9' basement walls
- Chrome faucets throughout
- TV HDMI chase at fireplace
- Fully tiled primary bath shower
- Tile floors in all bathrooms (powder bath on main level is laminate)
- Solid surface enameled shelving in all closets & pantry
- Ceiling fans in great room and primary bedroom
- Ceiling fan pre-wire and switch in all bedrooms
- Laundry room cabinet with hanging rod and shelf (sink/cabinet incl in 2 story plans)
- High traffic stair carpet
- 8 lb. carpet pad
- Sherwin-Williams® interior/exterior paint
- Straight black iron spindles on staircase
- Plumbing stub for future wet bar/lower-level bath (plan specific)
- CAT 6 outlet at GR Fireplace, Primary Bedroom, Finished LL Rec Rm



Get more with Inspired Homes...

Plans: Windsor, Delano, Glenwood, Opus II...

STANDARD FEATURES

WARRANTY

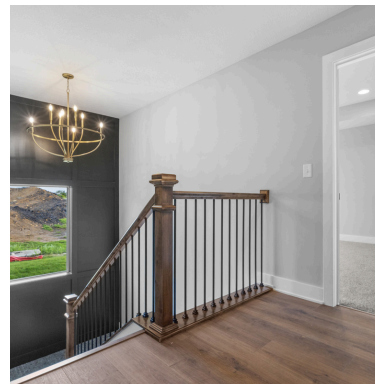
- 1 Year workmanship warranty
- 2 Year systems warranty
- 10 Year structural warranty

EXTERIOR FEATURES

- 8' tall two-panel front door
- Tall front door handle (bronze or brushed chrome)
- 3 car garage- Painted w/ trim base, SW Pure White
- 8' tall garage doors (non-insulated)
- Wi-Fi enabled garage door openers with (1) keypad
- Fully sodded yard with front landscaping
- Irrigation system with shrub zone
- Recessed soffit lighting
- Covered rear patio with fan & light (patio size varies per plan)
- Tall slider glass door (Lower Level - Walkout only)

ENERGY EFFICIENCY

- 95% high efficiency gas furnace
- 14 SEER air conditioner
- Programmable thermostat
- Pella® vinyl Low-E thermal windows
- Passive radon mitigation system
- LED light bulbs throughout
- Whole house humidifier



BE INSPIRED. BUILD INSPIRED. LIVE INSPIRED.

www.inspired-homes.com

*Standard features are subject to change without notice and could vary by floor plan, lot, and community.

A- 9.17.25