



—THE—
HARTFORD A
www.capitalhomes.com



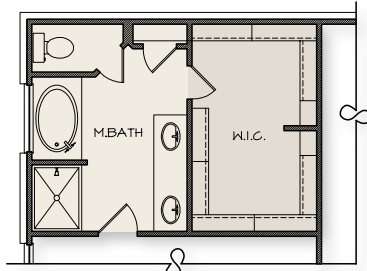
Drawings are artistic renderings only. Actual home and floor plan may vary from rendering and community. HERS rating shown is the best certified rating obtained for this plan.

AT CAPITAL HOMES, WE ARE COMMITTED TO BUILDING HIGH QUALITY,
ENERGY-EFFICIENT HOMES THE RIGHT WAY, AT THE RIGHT PRICE.
EACH OF OUR HOMES IS BUILT TO THE HIGHEST STANDARD AND IS
THIRD-PARTY VERIFIED TO PRESERVE THE ENVIRONMENT, AND DELIVER
ENERGY SAVINGS MONTH AFTER MONTH, YEAR AFTER YEAR.

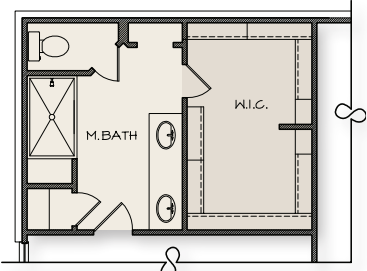


THE HARTFORD A

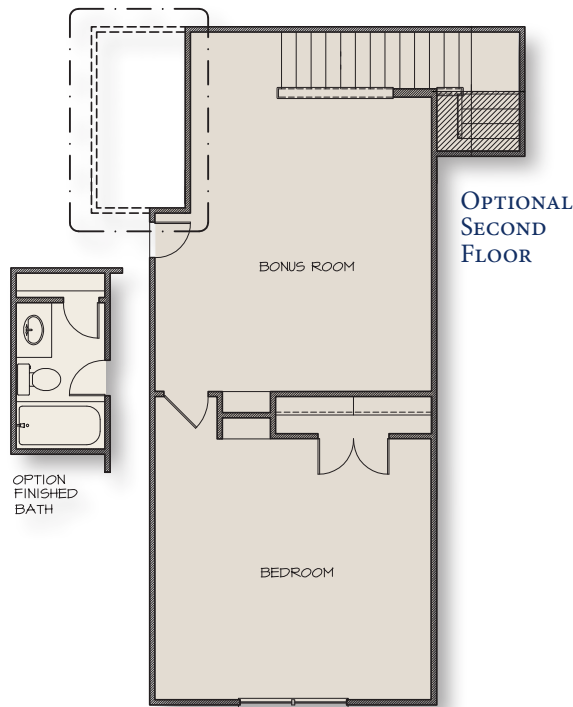
FLOOR PLAN



MASTER BATH OPTION I

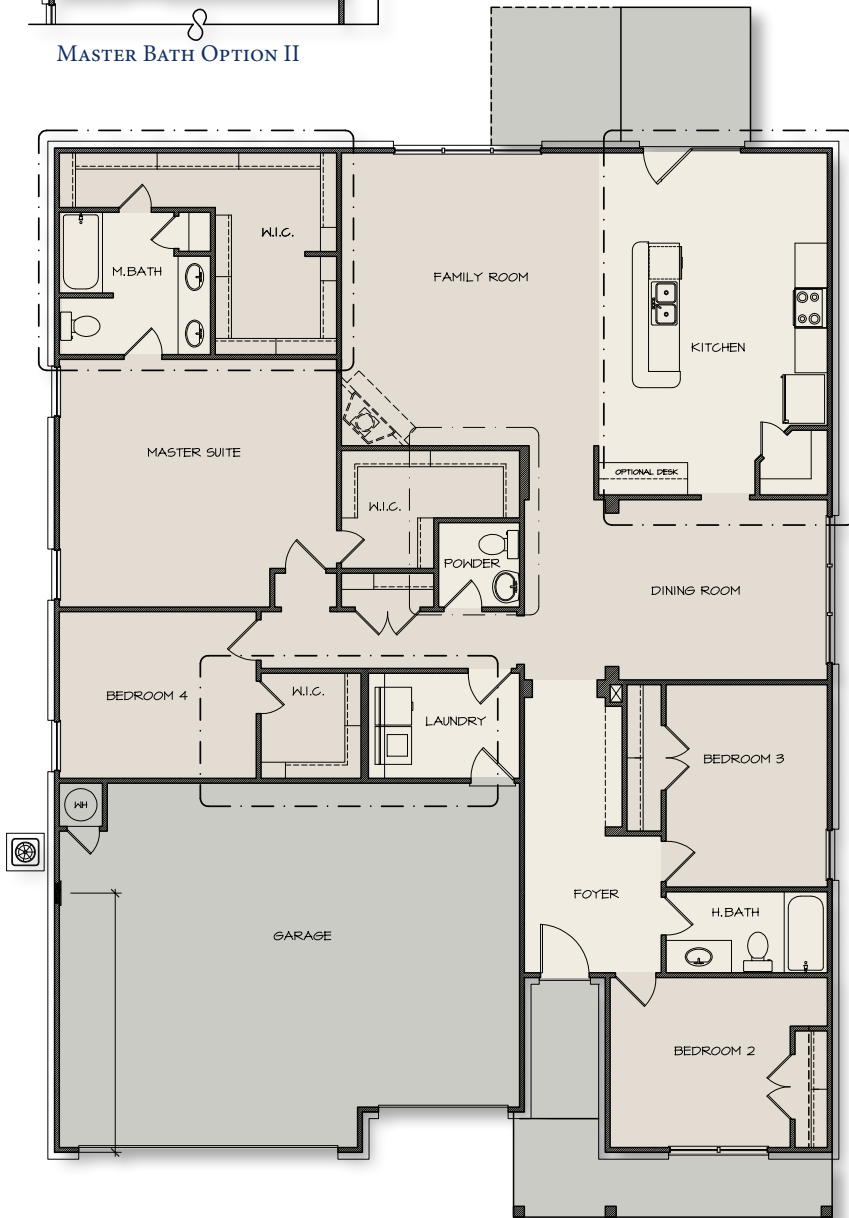


MASTER BATH OPTION II



OPTIONAL SECOND FLOOR

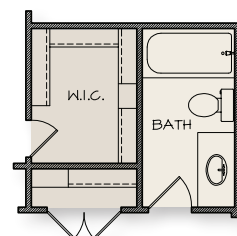
OPTION FINISHED BATH



SQUARE FOOTAGE	2285-2900
BEDROOMS	4-5
BATHROOMS	2.5-3.5
HERS RATING	63

POPULAR UPGRADES

- Additional patio space
- Four and six foot garage extensions
- Hardwood flooring
- Premium appliances and fixtures
- Exterior design options
- Ask a Capital Homes representative about more options



OPTIONAL FULL BATH