

Collinsville III

Front Entry Garage • 3 Bedrooms, 3.5 Baths and 2-Car Garage

Approximately 2,515 Living Sq. Ft.

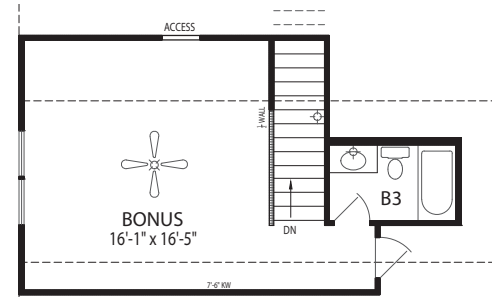


| APPROX. AREA | |
|---------------|-------|
| FIRST LEVEL | 2,147 |
| SECOND LEVEL | 368 |
| TOTAL LIVING | 2,515 |
| <hr/> | |
| GARAGE | 422 |
| FRONT PORCH | 114 |
| REAR PORCH | 185 |
| TOTAL COVERED | 3,262 |

Regent
HOMES
Offered By Regent Realty

www.RegentHomesTN.com

Elevation and Floor Plans may vary per builder homesite



Second Level

For More Information Call

*In the interest of continuous improvement, Regent Homes reserves the right to make modifications in exterior designs, architectural details, materials and specifications at any time without prior notice. All features, designs, and prices are subject to change without prior notice. Room dimensions and square footage are approximate and floor plans and elevation may vary per builder homesite. The above illustration is for demonstration purposes only. Please consult working drawings for actual dimensions and information. ©2063 Regent Homes LLC.

All homes built by Regent Homes are built in planned communities that contain deed restrictions, use restrictions and maintenance fees. Please consult your sales representative to obtain an official copy of the deed restrictions.

