

# DESIGN

MILANO - 5212



A



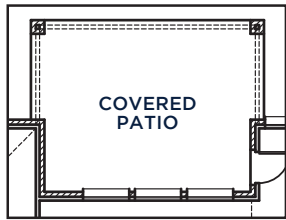
B



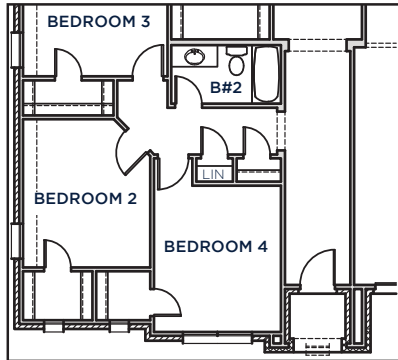
C



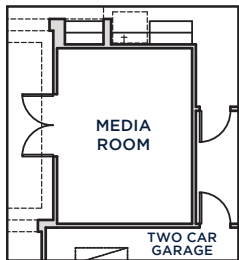
All Product including Architectural Designs, ©2000-2023, Shaddock Homes, LTD., All rights reserved. There may be existing or future design changes made in the floorplans, building products, methods, square footage, or designs used in our homes that are not reflected in our information, sales center or in our models. The materials, designs, square footages, features, and amenities shown are based upon current development plans, which are subject to change without notice. No guarantee is made that the designs, square footages, materials, features, and amenities depicted by artist's renderings or otherwise described will be built, or if built, will be of the same type, size or nature as depicted or described. All stone elevations, metal roofs, cast stone door and window headers and solid sawn cedar posts are optional, but available via change order. Front doors will match the specification sheet or chosen door upgrade. Prices and terms subject to change without notice. **REVISION DATE: 4.17.2019**



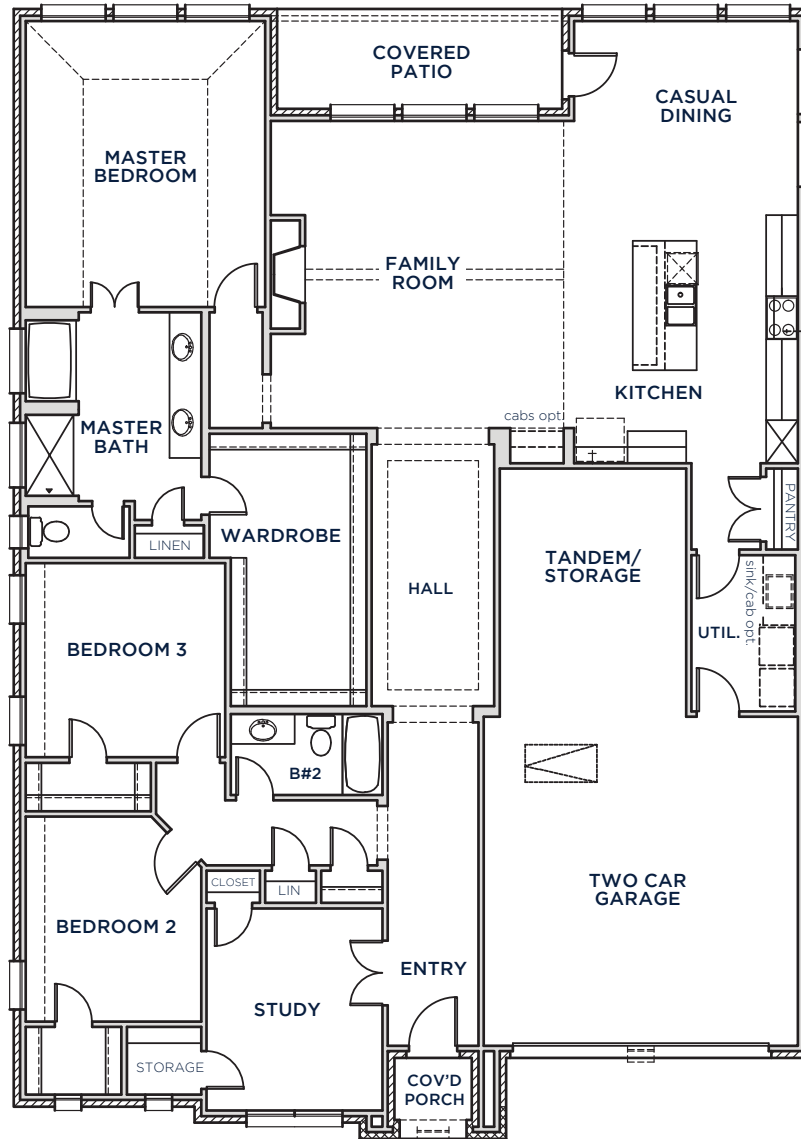
COVERED PATIO  
EXTENDED COVERED PATIO OPTION



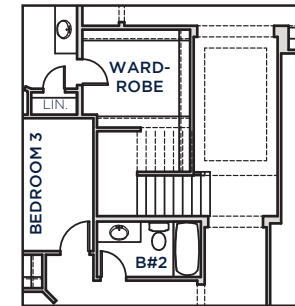
BEDROOM 4 OPTION  
IN LIEU OF STUDY



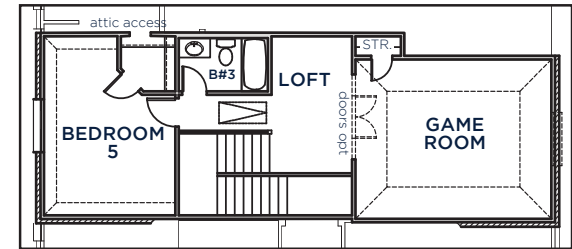
MEDIA ROOM OPTION  
IN LIEU OF GARAGE STORAGE SPACE



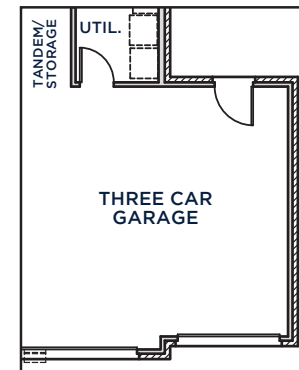
FIRST FLOOR



WARDROBE/STAIRS FOR SECOND FLOOR OPTION



BEDROOM 5, BATH 3 AND GAME ROOM OPTION  
\*SECOND FLOOR OPTION



THREE CAR GARAGE OPTION

**MILANO**  
5212 (4.17.19)

	S.FT
First Floor	2596
<b>Total Living Area</b>	<b>2596</b>
2 Car Garage	609
Covered Patio	110
Covered Porch	37
Total Area	3352

**Options**

Ext. Covered Patio	171
3rd Car Garage	208
Media Room	179
Game Room, 3rd Bath & 5th Bed	755

SHADDOCK HOMES