

# The Danbury Farmhouse

## MODEL



As Is Home Price On Your Lot

**\$729,900\***

Fox River Falls (Lot 43)  
W208 N5633 Turnberry Lane  
Menomonee Falls, WI 53051

### Model Home



3 Bedrooms



2 Bathrooms



2,519 SF



3-Car Garage

### Base Plan



3 Bedrooms



2 Bathrooms



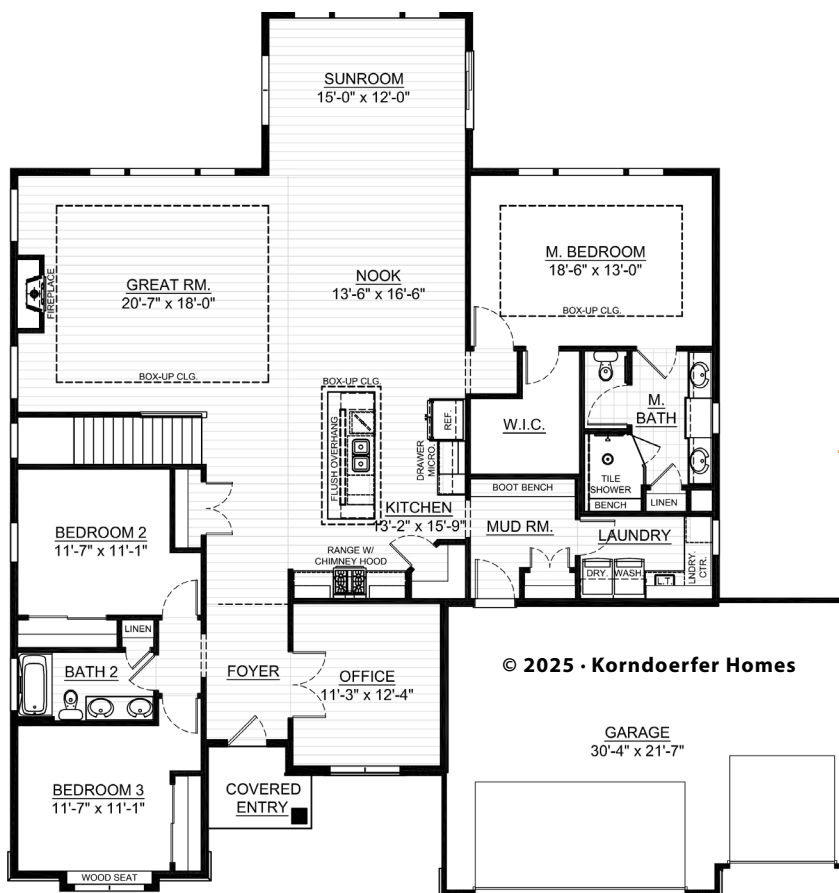
2,327 SF



2-Car Garage

### Directions:

Hwy 164 to Silver Spring Drive. East on Silver Spring Drive. Turn left onto Muirfield Drive. Turn left onto Turnberry Lane to home on the left.



### FIRST FLOOR

2,519 SF

© 2025 • Korndorfer Homes

\*As Is Home Price is subject to change without notice & excludes the following: furniture, decorating, tv, window treatments, lot, turn-key costs, site improvement package, driveway, walkway, patio, landscaping & irrigation.



### ASK RYAN!

Online Sales Consultant  
262-884-9551  
sales@korndorferhomes.com

**KORNDORFER**  
HOMES  
KORNDORFERHOMES.COM



# THE DANBURY FARMHOUSE MODEL

## ADDITIONAL INVESTMENTS IN THIS HOME\*

### EXTERIOR

James Hardie® fibercement siding and 6" corner boards on sides & rear

Natural stone on front elevation with white mortar & buff color sill cap plus extra stone added

Pella® 250 series windows w/ 8' patio door & additional windows & grilles

Three car front entry garage with 8' tall steel double insulated overhead doors, ultra quiet openers, insulated and drywalled

8' tall front door with ¾ glass w/ sidelites removed

Zero entry into home at garage & front porch

Concrete driveway, walkway & patio

Landscaping & irrigation system

### KITCHEN

Box up ceiling with 5 ¼" painted crown molding

Designer kitchen layout w/ painted 42" tall upper cabinets & drawer bases flanking the range, utensil bin, crown molding & under cabinet LED lighting

Personalized quartz countertop selection with Kohler® Cairn sink & tile backsplash

GE® French door refrigerator w/ cabinet side panels, built in microwave drawer, slide-in gas range & chimney hood in stainless steel finish; air gap switch for garbage disposal

Walk-in pantry includes melamine shelving, jamb switch for light & a stained frosted glass pantry door

### MAIN LEVEL

Raised ceiling height to 10'

16' x 12' sunroom

Box up ceiling with accent beams in great room

Luxury vinyl plank flooring in sunroom, great room, nook, hallways, office, foyer, & mud room

Remote controlled Cosmo 42 linear gas fireplace w/ driftwood logs, stacked stone, classic shelf mantle w/returns & floating shelves

Office w/ decorative wainscoting & double glass doors

5'tub/shower w/ tiled walls to ceiling, comfort height elongated toilet, large linen closet & double bowl sink in bath 2

Stand alone laundry room features GE smart washer/steam dryer w/ pedestals, shelving, quartz countertop, utility sink & cabinets w/ crown molding

Built in stained lockers with coat hooks & bench in mudroom

### MASTER SUITE

Box up ceiling with 5 ¼" painted crown molding

36" wide doors

Large walk-in closet w/ custom closet system

Deluxe Master Bath C w/ separate commode room, his & hers vanities with quartz countertops & cabinet in between

Zero entry walk-in shower tiled to ceiling, bench, tile shelf, additional ceiling mounted shower head, linear drain, grab bars, glass swing door and panel

Heated tile flooring and Archer commode with heated bidet toilet seat

### ADDITIONAL OPTIONS

Smooth drywall finish

One panel solid core doors

6½" base & 3½" casing

Jamb and cased windows

Upgraded melamine shelves in closets

Personalized Mohawk® flooring & Moen® plumbing selections

8 lb carpet pad

Custom paint, hardware, mirrors & Maxim® light fixtures

Dimmable rocker style switches

Finished basement staircase w/ railing

Active radon mitigation system

Basement bathroom rough in

Painted basement floor

Monarch Quarry View egress windows

Ecobee® 5 Pro Smart Thermostat with voice control

Home security system

\*This list is not intended to be all inclusive. See our New Home Consultant for details.



### ASK RYAN!

Online Sales Consultant  
262-884-9551  
sales@korndoerferhomes.com

KORNDORFER  
HOMES  
KORNDORFERHOMES.COM

