

DESIGN

KILGORE - 4447F



SHADDOCK
—HOMES—



Tudor Revival



Craftsman



Modern Farmhouse



Texas Hill Country



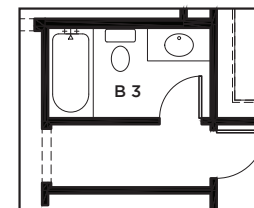
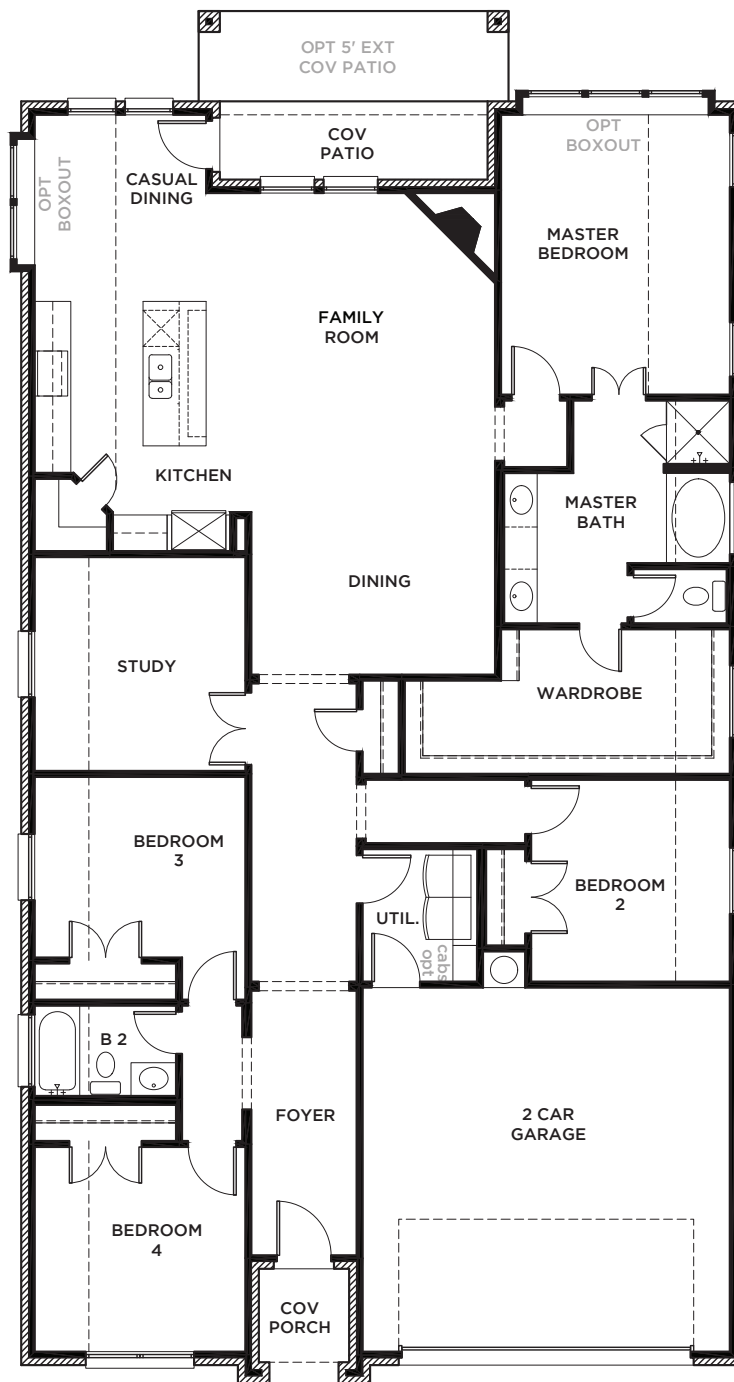
All Product including Architectural Designs, ©2000-2023, Shaddock Homes, LTD., All rights reserved. There may be existing or future design changes made in the floorplans, building products, methods, square footage or designs used in our homes that are not reflected in our information, sales center or in our models. The materials, designs, square footages, features, and amenities shown are based upon current development plans, which are subject to change without notice. No guarantee is made that the designs, square footages, materials, features, and amenities depicted by artist's renderings or otherwise described will be built, or if built, will be of the same type, size or nature as depicted or described. All stone elevations, metal roofs, cast stone door and window headers and solid sawn cedar posts are optional, but available via change order. Front doors will match the specification sheet or chosen door upgrade. Prices and terms subject to change without notice. **REVISION DATE: 1.10.2020**

KILGORE 4447F (1.10.20)

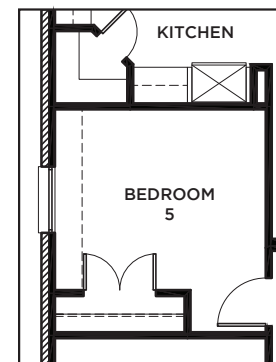
	S.FT
First Floor	2259
Total Living Area	2259
Garage	450
Covered Entry	34
Covered Patio	64
Total Area	2807

Options
Ext. Cov'd Patio 86

SHADDOCK HOMES



OPT BATH 3



OPT BED 5 ILO
STUDY

FIRST FLOOR