

DESIGN

PITTSBURG - 5410BH



SHADDOCK
— HOMES —



A



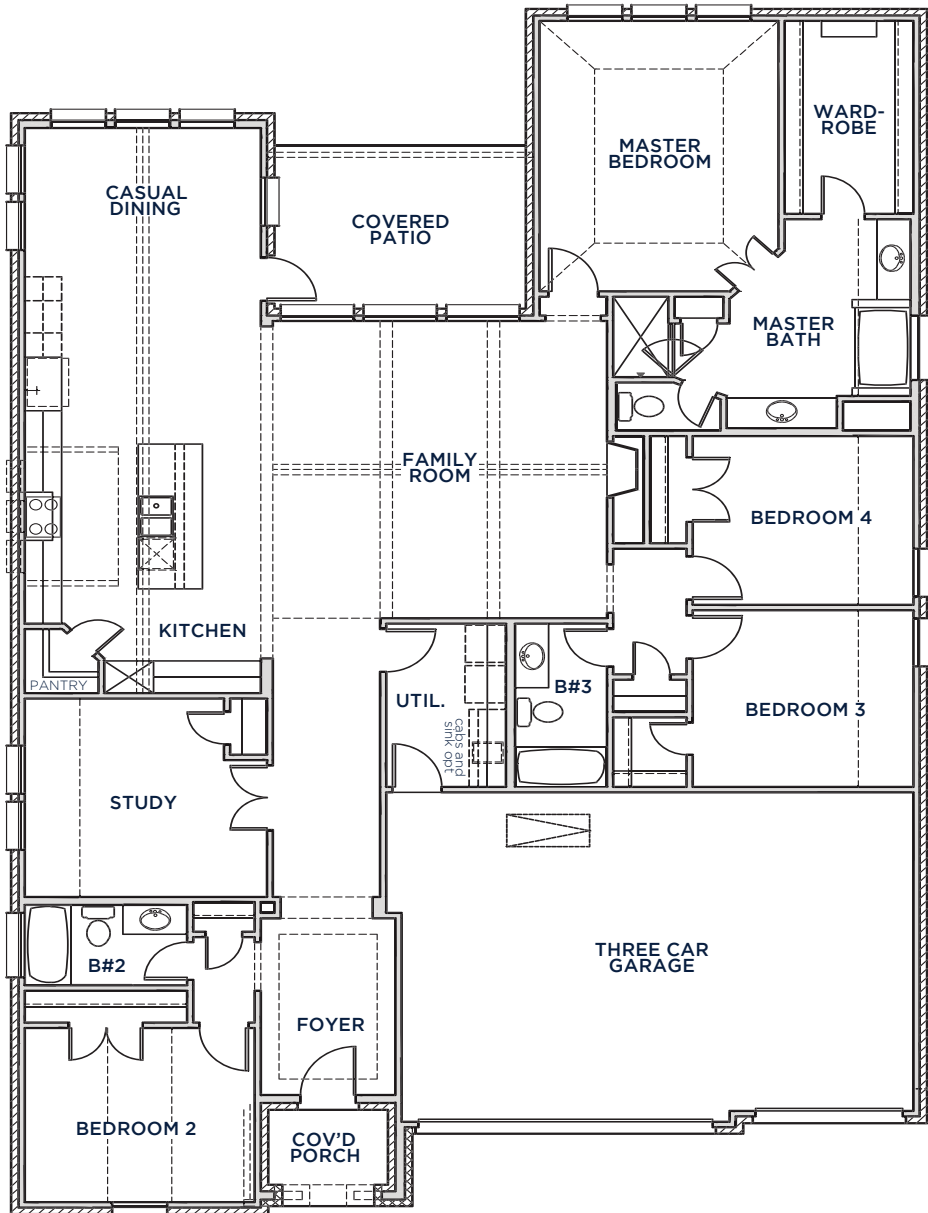
C



D



All Product including Architectural Designs, ©2000-2023, Shaddock Homes, LTD., All rights reserved. There may be existing or future design changes made in the floorplans, building products, methods, square footage, or designs used in our homes that are not reflected in our information, sales center or in our models. The materials, designs, square footages, features, and amenities shown are based upon current development plans, which are subject to change without notice. No guarantee is made that the designs, square footages, materials, features, and amenities depicted by artist's renderings or otherwise described will be built, or if built, will be of the same type, size or nature as depicted or described. All stone elevations, metal roofs, cast stone door and window headers and solid sawn cedar posts are optional, but available via change order. Front doors will match the specification sheet or chosen door upgrade. Prices and terms subject to change without notice. **REVISION DATE: 10.24.19**

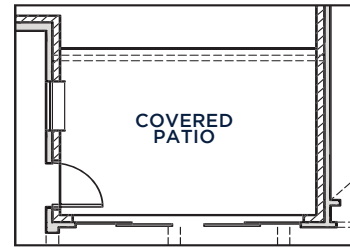


PITTSBURG
5410 (10.24.19)

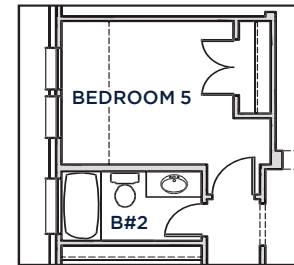
	S.FT
First Floor	2586
Total Living Area	2586
3 Car Garage	607
Covered Patio	139
Covered Porch	46
Total Area	3378

SHADDOCK HOMES

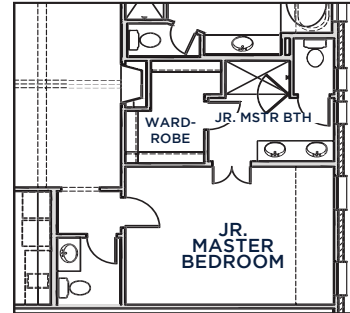
FIRST FLOOR



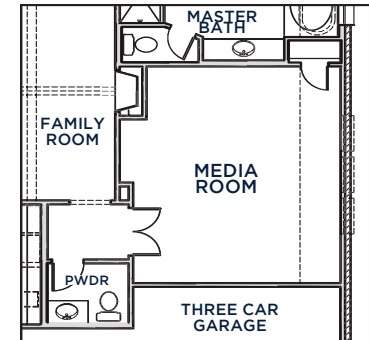
12' SLIDING GLASS DOORS OPTION



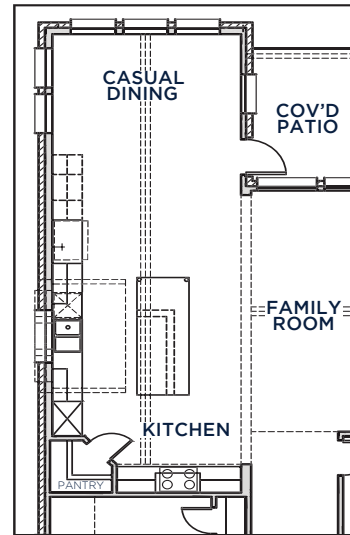
BEDROOM 5 OPTION
IN LIEU OF STUDY



JUNIOR MASTER BEDROOM
AND BATHROOM OPTION



MEDIA ROOM OPTION
IN LIEU OF BEDROOM 3 & 4
BATH 3 BECOMES POWDER BATH



ALTERNATE KITCHEN LAYOUT
OPTION