

ELECTRICAL LEGEND			
	\$ =Single Pole Switch		=Television/Cable
=Duplex Receptacle GFI GFI Protected	\$3 =3-Way Switch		=Telephone Jack
	\$4 =4-Way Switch		=Combination Jack
	WP =Weatherproof	=Smoke Detector	
		=Junction Box	

Approx. Shipping Height (ft)14'-0"

CONDITIONED CRAWLSPACE  
Public Water/Well Water???  
Public Sewer/Private Septic (LPP/Mound System/Gravity)???  
Gas Type (LP/Natural Gas)???

Applicable Building Codes	Design Basis
Delaware, Sussex County 2012 International Residential Code w/Amendments (Residential Sprinklers not required) 2014 National Electrical Code with Amendments 2012 State of Delaware Plumbing Code w/ County Amendments 2018 International Energy Conservation Code w/Amendments	Construction Type: Wood Framed, Unprotected (VB) Use Group: Single Family Dwelling Snow Load: 20 PSF Wind Load: 100 MPH with 3 Second Gusts  Floor Load-1st: 40 PSF - Floor Load-2nd: 40 PSF - Floor Load-Attic: 20 PSF Limited Storage  Exposure: B Seismic: N/A

Plant Square Footage			
Width	Length	Square Feet	Module
16'-0"	56'-0"	896 SQ. FT.	Module A
15'-0"	52'-0"	780 SQ. FT.	Module B
0	0	0 SQ. FT.	Module C
0	0	0 SQ. FT.	Module D
0	0	0 SQ. FT.	Module E
0	0	0 SQ. FT.	Module F
0	0	0 SQ. FT.	Module G
0	0	0 SQ. FT.	Module H
0	0	0 SQ. FT.	Module I
0	0	0 SQ. FT.	Module J
0	0	0 SQ. FT.	Module K
0	0	0 SQ. FT.	Module L
0	0	0 SQ. FT.	
		1676.00 SQ. FT.	Square Feet Total


BUILDER:  
Beracah Homes, Inc.  
9590 Nanticoke Business Park Drive  
Greenwood, DE. 19950  
Field Supervisor:???

INSTALLER:  
Ervin King & Son's Construction  
463 Maidstone Branch Road  
Dover, DE 19904

CUSTOMER CONTACT:  
NAME  
PHONE#  
EMAIL

SITE ADDRESS:  
??  
??, DE ??

Finished Square Footage	
1676	Square Feet-First Floor (Finished)
??	Square Feet-Second Floor (Finished)
0	Square Feet-Third Floor (Finished)
1676.00	Square Feet-Total (Finished)
0	Square Feet-Total (Unfinished)



BERACAH HOMES

9590 Nanticoke Business Park Drive  
Greenwood, Delaware 19950  
www.beracahhomes.com

NAME: Builder

DRAWN: Drawn

REVISION: Kelvin Beltran  
Ponderosa\_PD1

DATE: ??-??-???

SCALE: AS NOTED

Ranch: 31' x 52'/56' (K. Watson)

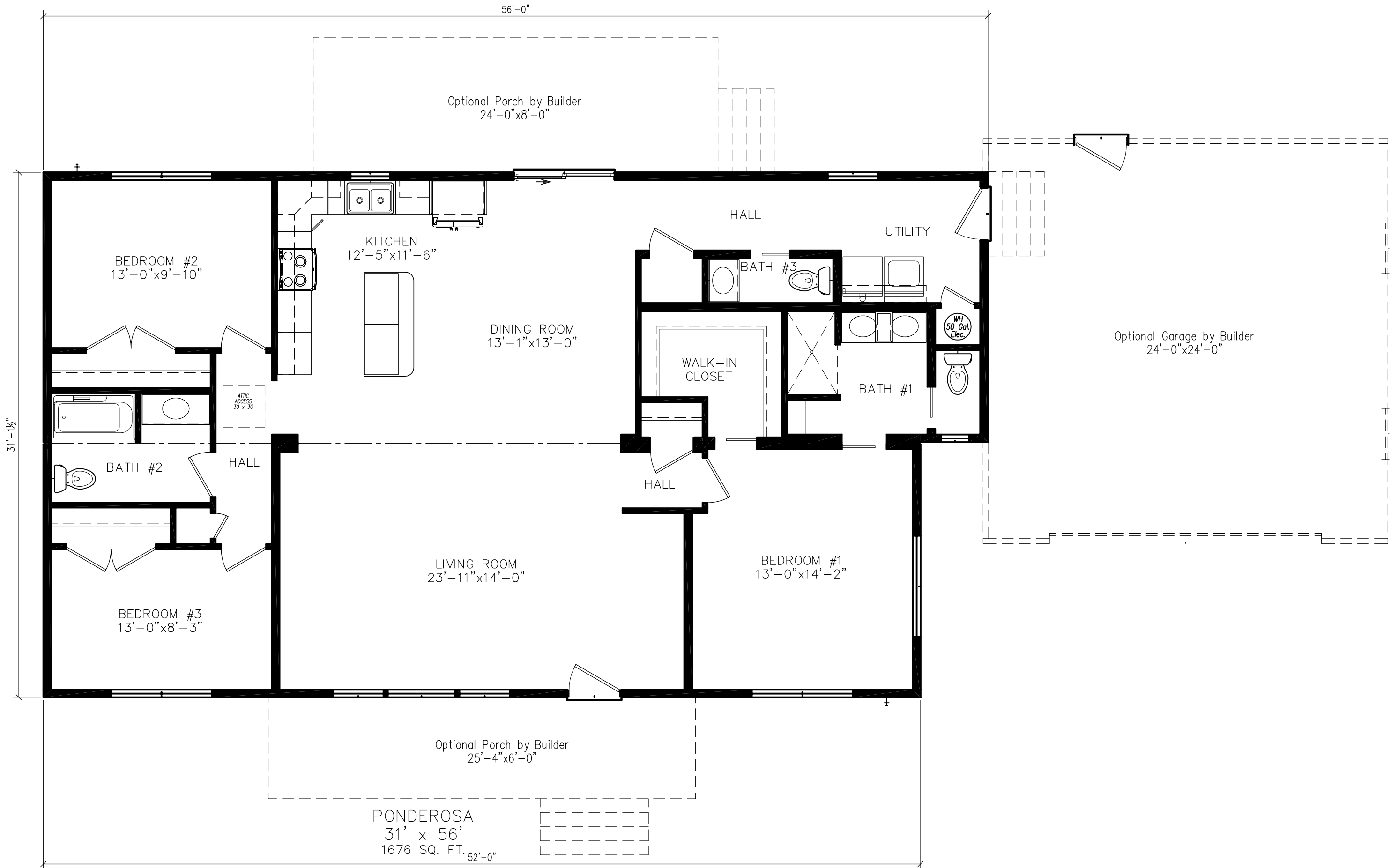
HOUSE STYLE:

State, County, City

SHEET: C1

PROJECT: 00-0000

6/20/2024 11:50 AM





*Front Elevation*  
SCALE: 1/8"=1'-0"

NOTE:

ELEVATIONS MAY SHOW ITEMS NOT PROVIDED BY BERACAH HOMES, PLEASE SEE CONTRACT FOR INCLUDED OPTIONS.  
ALL FOUNDATIONS ARE BY THE BUILDER



BERACAH HOMES

9590 Nanticoke Business Park Drive  
Greenwood, Delaware 19950  
www.beracahomes.com

Ponderosa

Builder

DATE: ??-??-???

Drawn

REVISION: Kelvin Beltran  
Ponderosa\_PD1

SCALE: AS NOTED

Ranch: 31' x 52'/56' (K. Watson)

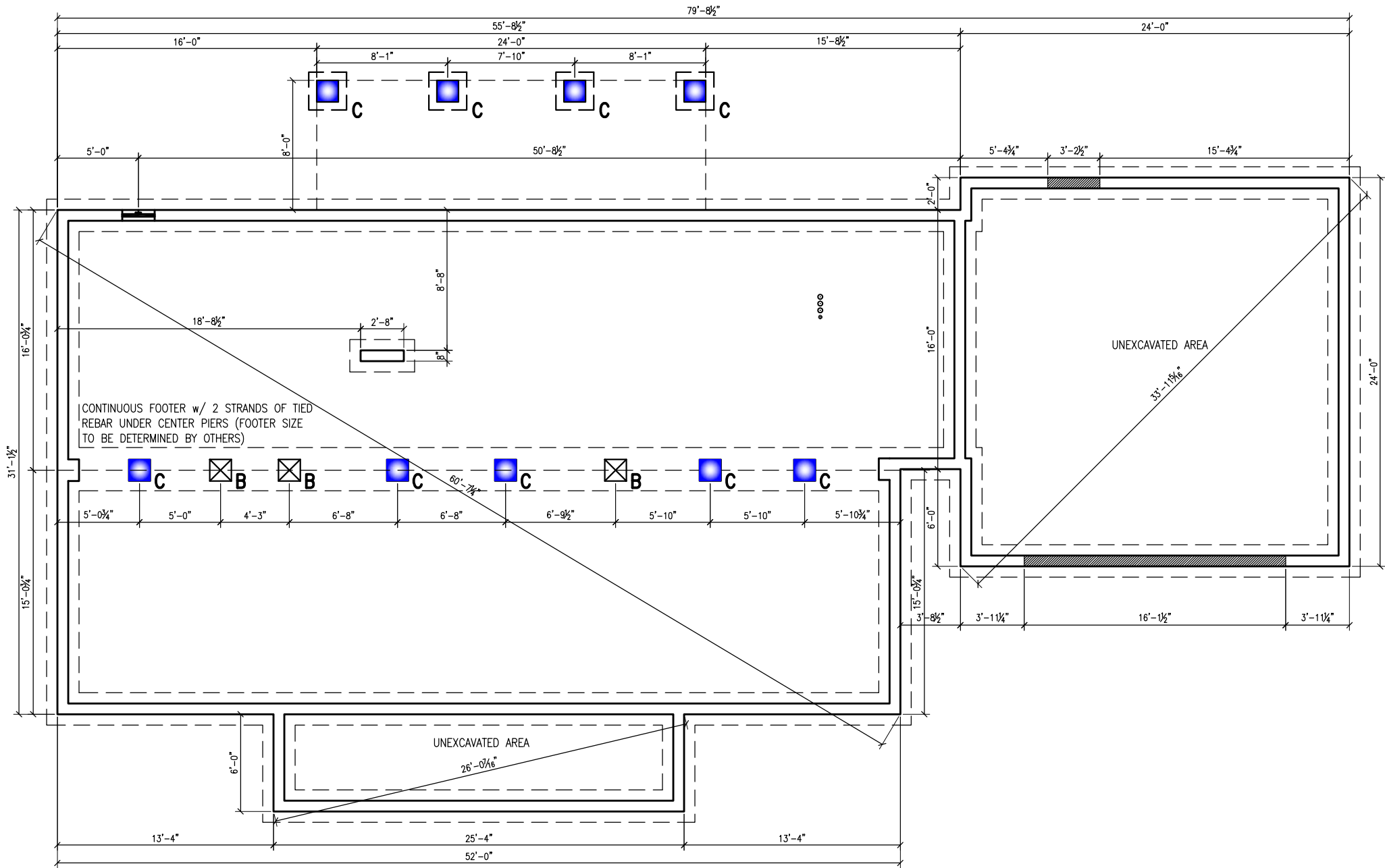
State, County, City

SHEET:

PRELEV

PROJECT:

00-0000



Foundation Plan (Proposed)  
SCALE: 1/8"=1'-0"

FOUNDATION DISCLAIMER:

- THIS DRAWING IS SUGGESTIVE ONLY. FOUNDATION PLAN HAS BEEN PROVIDED FOR FOOTPRINT DIMENSIONS ONLY.
- ALL CONSTRUCTION AND MATERIALS BELOW THE BOTTOM OF FLOOR JOIST ARE TO BE FURNISHED AND INSTALLED BY THE BUILDER.
- LALLY COLUMN/PIER LOCATIONS ARE TO BE FOLLOWED PER PRINT.
- VENT LOCATIONS ARE SUGGESTIVE ONLY AND MAY HAVE TO BE ADJUSTED TO MEET SPECIAL LOCAL REQUIREMENTS.
- FOUNDATION/BASEMENT TO BE BUILT TO MEET ALL STATE, COUNTY, & LOCAL CODES AND REGULATIONS.
- IF REQUIRED FOUNDATION VENTS ARE COVERED BY AN ON SITE PORCH OR ADDITION THE VENTS MUST BE EXTENDED TO THE EXTERIOR OF THE STRUCTURE

Foundation Notes:

- USE 2x8 PRESSURE TREATED SILL PLATE
- REMOVE ALL VEGETATION FROM CRAWL SPACE
- USE 6 MIL. VAPOR BARRIER
- ALL PIERS AND BLOCK ARE TO BE LAID WITH TYPE "M" OR "S" MORTAR
- ALL FOOTINGS SHALL EXTEND BELOW FROST LINE
- PROVIDE 8"x 16" BLOCK PILASTER (WHEN REQUIRED BY CODE)

FOUNDATION LEGEND			
	FOUNDATION VENT 8x16 SCREENED ALUMINUM VENT (TYP) AT LOCATIONS SHOWN		FOUNDATION ACCESS 24" x 32" STEEL ACCESS DOOR (TYP) AT LOCATIONS SHOWN
	POINT LOADED PIER (FULL HEIGHT PIER) 16"x 16" CONCRETE BLOCK PIER ON A 2'-4" x 2'-4" x 1'-0" POURED CONCRETE FOOTING FILL PIER SOLID		FOUNDATION FLOOD VENT (TYP) AT LOCATIONS SHOWN
	STANDARD PIER (FULL HEIGHT PIER) 16"x 16" CONCRETE BLOCK PIER ON A 2'-4" x 2'-4" x 1'-0" POURED CONCRETE FOOTING		LALLY COLUMN-4" DIAMETER (Standard) ON A 2'-0" x 2'-0" x 1'-0" POURED CONCRETE FOOTING (3) #4 REBAR WIRED TOGETHER IN BOTH DIRECTIONS (FOOTING SIZE IS TO BE DETERMINED BY A PROFESSIONAL ENGINEER)
	GIRDER PIER 16"x 16" CONCRETE BLOCK PIER ON A 2'-4" x 2'-4" x 1'-0" POURED CONCRETE FOOTING TOP OF PIER 9 1/4" BELOW THE TOP OF THE CONCRETE BLOCK WALL		LALLY COLUMN-4" DIAMETER (Point Loaded) ON A 2'-0" x 2'-0" x 1'-0" POURED CONCRETE FOOTING (3) #4 REBAR WIRED TOGETHER IN BOTH DIRECTIONS (FOOTING SIZE IS TO BE DETERMINED BY A PROFESSIONAL ENGINEER)



BERACAH HOMES

9590 Nanticoke Business Park Drive  
Greenwood, Delaware 19950  
www.beracahomes.com

Ponderosa

Builder

Drawn

REVISION: Kelvin Beltran  
Ponderosa\_PD1

DATE: ??-??-???

SCALE: AS NOTED

Ranch: 31' x 52'/56' (K. Watson)

State, County, City

SHEET:

F1

PROJECT:

00-0000

6/20/2024 11:50 AM