

FLOORPLAN

Plan C407
Elevation A



American
Legend
HOMES®

WWW.AMLEGENDHOMES.COM



FLOORPLAN

Plan C407



Elevation B with Stone



Elevation C with Stone



Plan C407
Revision 06/24/2020

WWW.AMLEGENDHOMES.COM

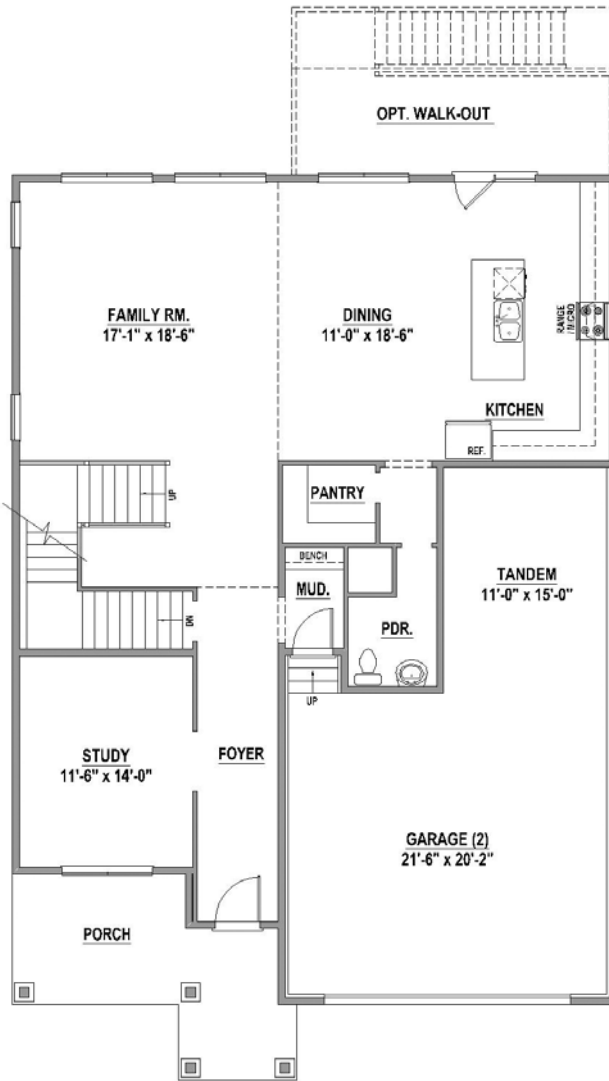
Prices, plans, specifications, square footage and availability are subject to change without notice or prior obligation. Square footage is approximate and may vary upon elevations and/or options selected. Elevation renderings are an artist rendering and are subject to change or modification without notice. Garage doors per community specifications. Please see Sales Representative for more information.



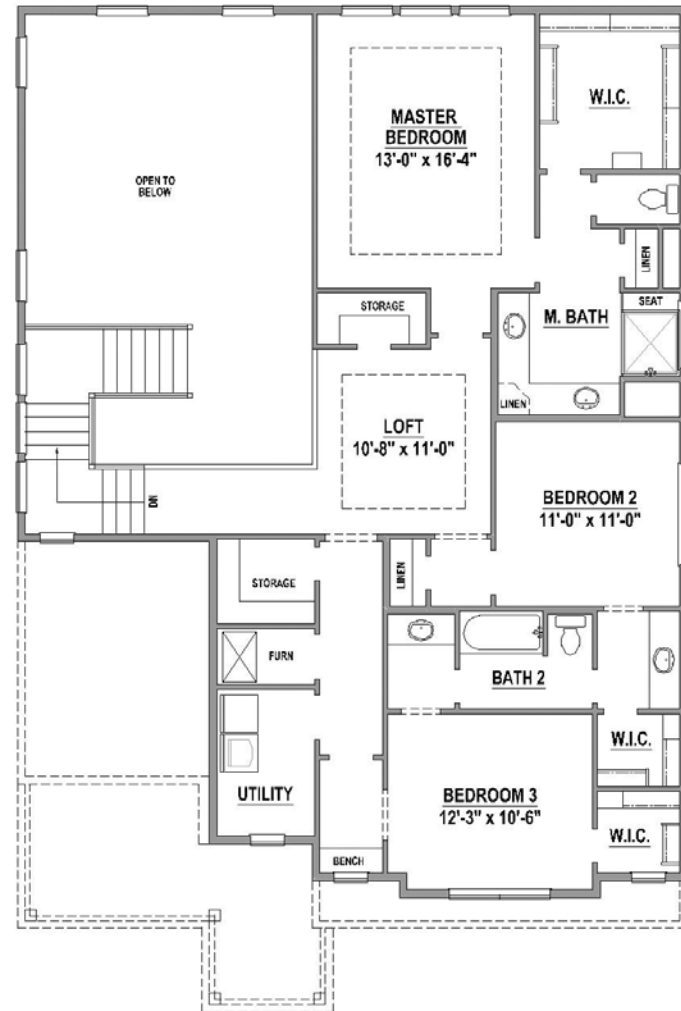
PLAN C407

2,701 SF

First Floor



Second Floor

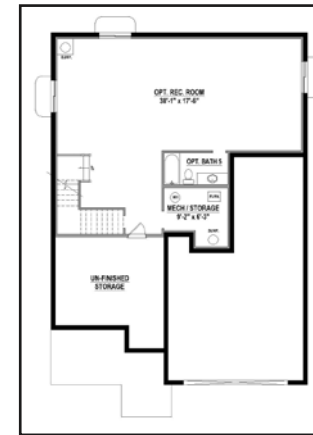


Features:

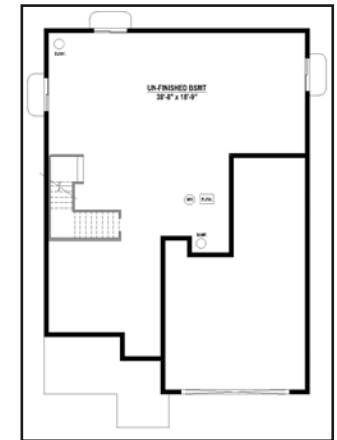
- 2 Story
- 3 Bedrooms
- 2 Full Baths
- 1 Powder Bath
- 1 Dining Area
- Study
- Loft
- 3-Car Garage



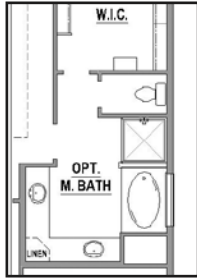
Optional Rec Room,
Bedroom 6 and Bath 5
(1,151 SF)



Optional Rec Room
and Bath 4
(1,151 SF)



Optional Unfinished
Basement



Optional
Master Bath



Optional
Fireplace



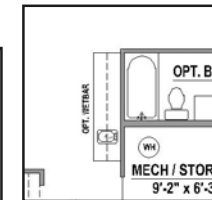
Optional
Alternate Kitchen



Optional Bedroom
5 with Bath 4
(41 SF)



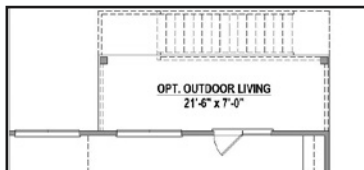
Optional Bedroom
4 and Bath 3
(171 SF)



Optional
Wet Bar



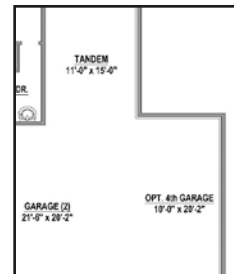
Optional
Multi-Sliding Doors



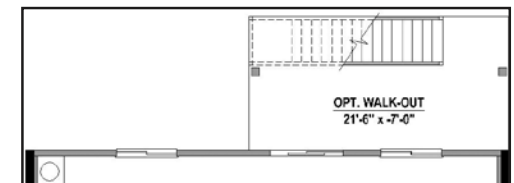
Optional Outdoor Living



Optional
Powder Bath
Upstairs



Optional
4th Car Garage



Optional Walk-Out Basement

Projected HERS Score

57

Your home's HERS score is a projected score based on plans. The lower the number, the more energy efficient the home. To learn more, visit www.hersindex.com

Annual Savings

\$2,196

*Relative to an average U.S. Home

*This information is presented for education purposes only. The HERS index for a confirmed rating will be determined by a third party HERS rater based on data gathered from on-site observations and, if required, testing of rated features for a home as featured, opinionated, oriented, and/or built.
 +Standard new home is based on the RESNET Reference Home definition with a HERS index of 100 (based on the 2006 International Energy Conservation Code)
 ++Typical resale home is based on the U.S. Department of Energy definition with a HERS index of 130.