

DESIGN

ALBANY - 4469



A



B



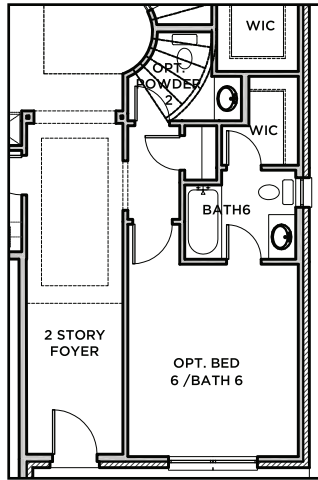
C



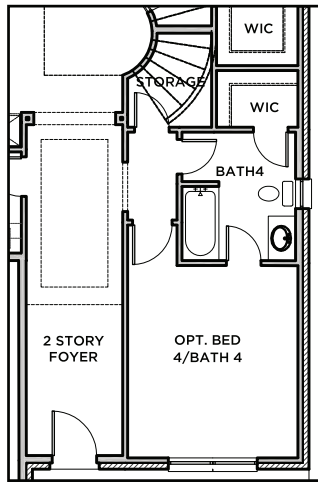
D



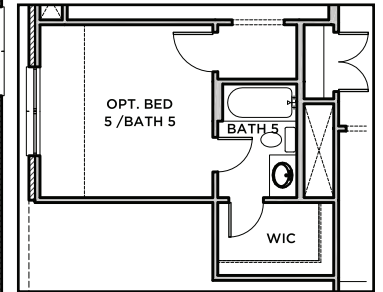
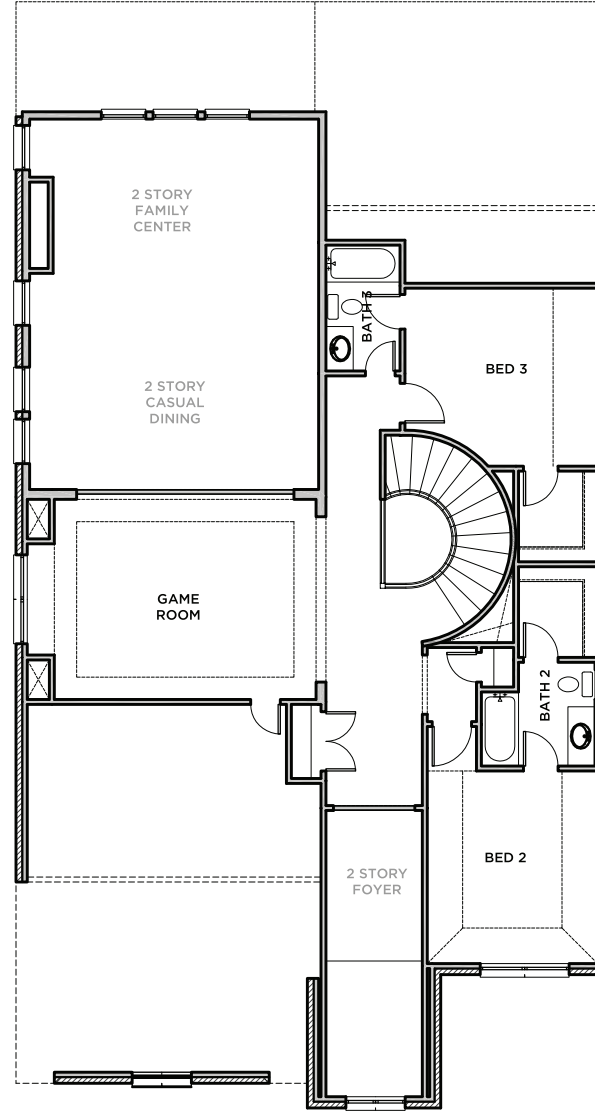
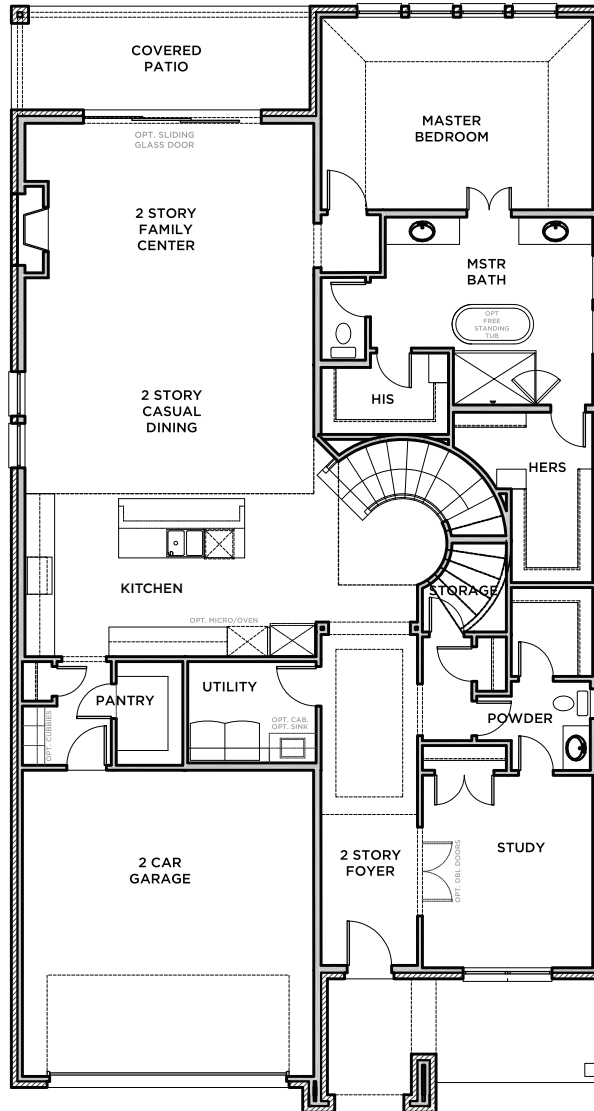
All Product including Architectural Designs, ©2000-2026, Shaddock Homes, LTD., All rights reserved. There may be existing or future design changes made in the floorplans, building products, methods, square footage or designs used in our homes that are not reflected in our information, sales center or in our models. The materials, designs, square footages, features and amenities shown are based upon current development plans, which are subject to change without notice. No guarantee is made that the designs, square footages, materials, features and amenities depicted by artist's renderings or otherwise described will be built, or if built, will be of the same type, size or nature as depicted or described. All stone elevations, metal roofs, cast stone door and window headers and solid sawn cedar posts are optional, but available via change order. Front doors will match the specification sheet or chosen door upgrade. Prices and terms subject to change without notice. REVISION DATE: 12.29.2025



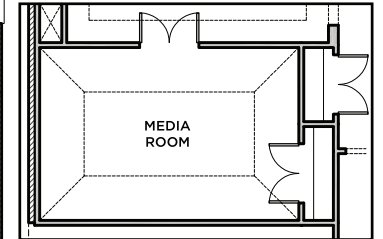
BED 6, BATH 6 WITH
POWDER OPT



BED 4 AND BATH 4
OPTION



BED 5 AND BATH 5
OPTION



MEDIA OPTION

ALBANY 4469 (12.29.25)

	S.F.T
First Floor	2199
Second Floor	1080
Total Living Area	3279
Garage	444
Covered Porch	149
Covered Patio	141
Total Area	4013

Options	
Bed 5/Bath 5	280
Media	235

SHADDOCK HOMES