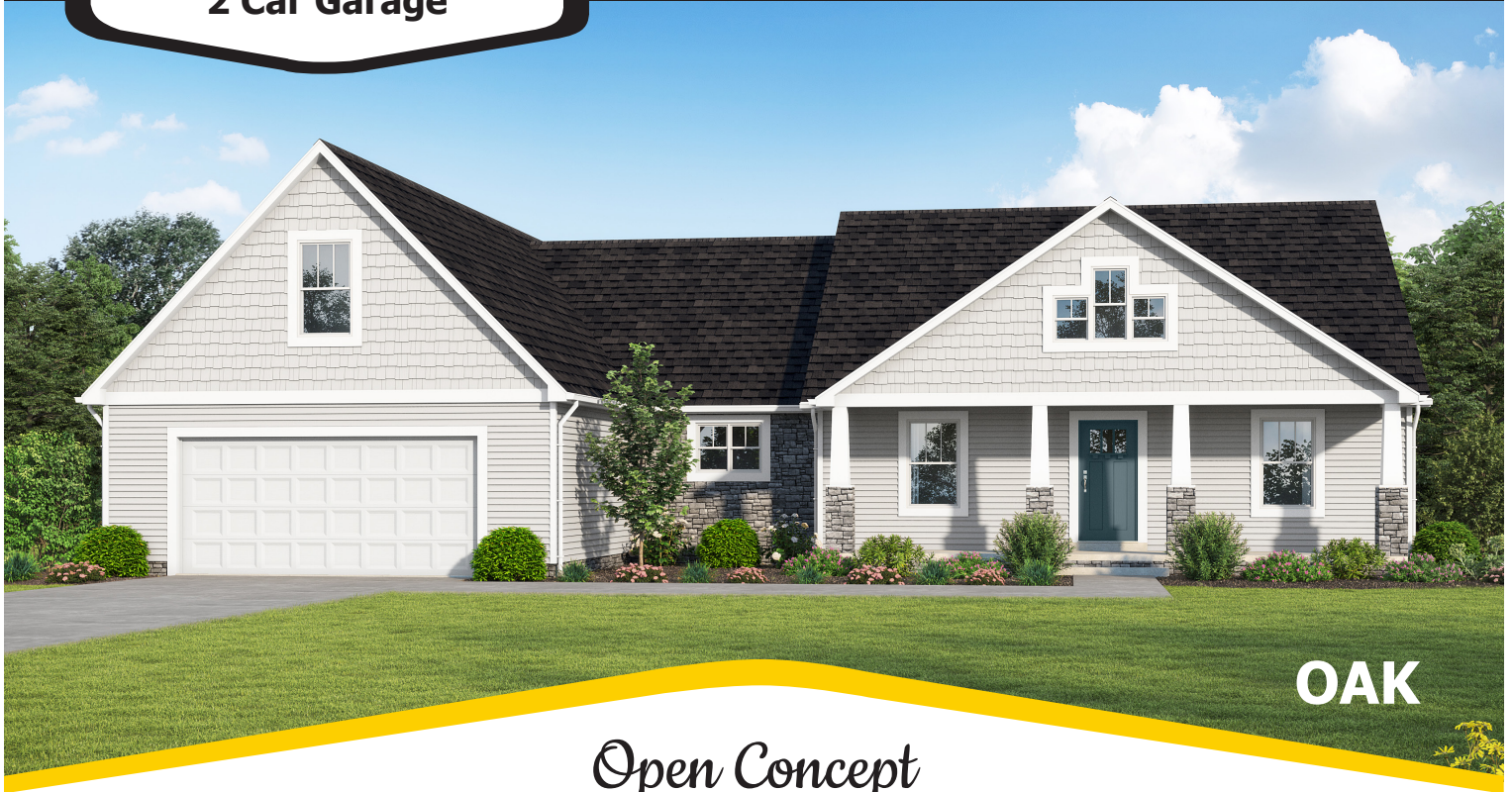


2349 Square Feet
3 Bedrooms
2.5 Baths
2 Car Garage

SPRING VALLEY



OAK

Open Concept
3 BEDROOM + STUDY



MAPLE



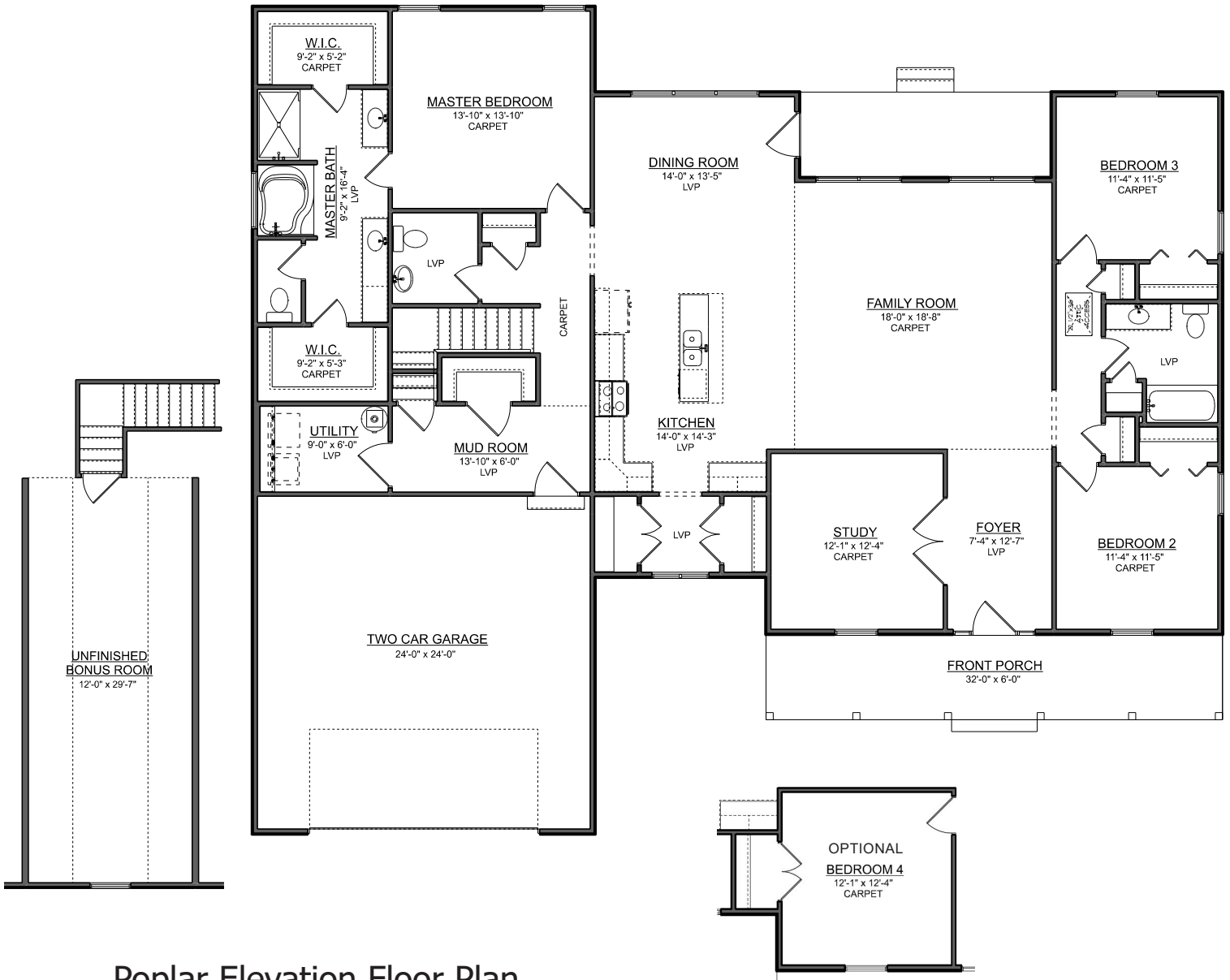
POPLAR



Call us about your dream home!

877-358-9199

SedgewickHomes.com



Poplar Elevation Floor Plan

© "Copyright Sedgewick Homes LLC.
All Rights Reserved"

Please see sales agent for plan differences.

These drawings are for illustration purposes only.

All dimensions are approximate and elevations may reflect optional features and colors. Square footage may vary by elevation.

