

# CHESTERFIELD

Traditional  
Elevation



Urban Farmhouse  
Elevation



Craftsman  
Elevation

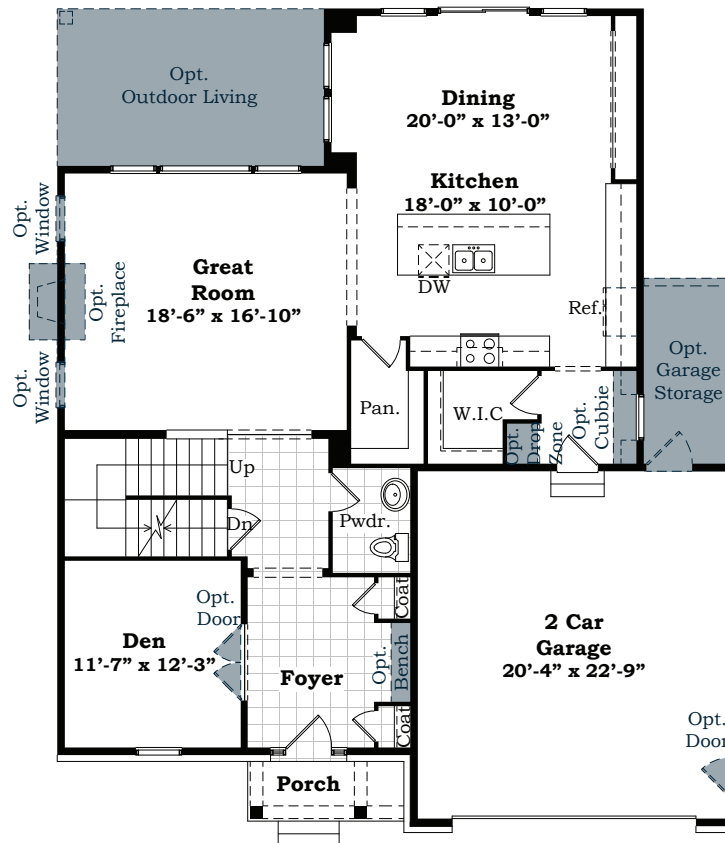


**Norfolk**  
H O M E S

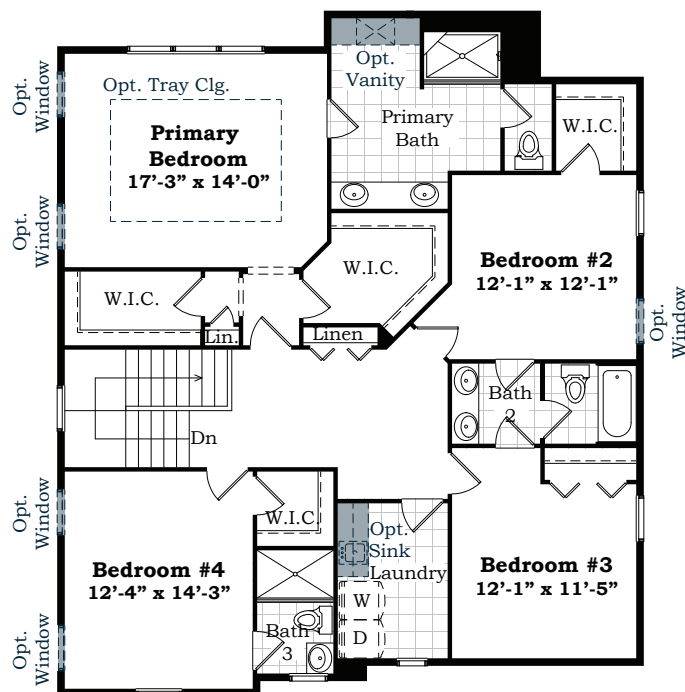
Building Dreams, One Home At A Time  
[www.norfolk-homes.com](http://www.norfolk-homes.com)



Approximate Sq.Ft. 2,978, 4 Bedrooms, 3.5 Baths,  
2 Car Garage



First Floor



Second Floor

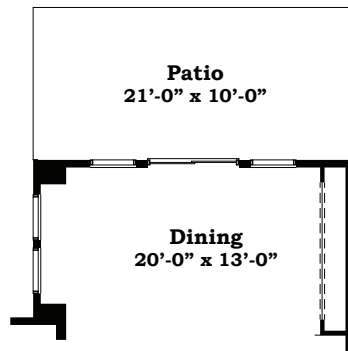


**Norfolk**  
HOMES  
www.norfolk-homes.com

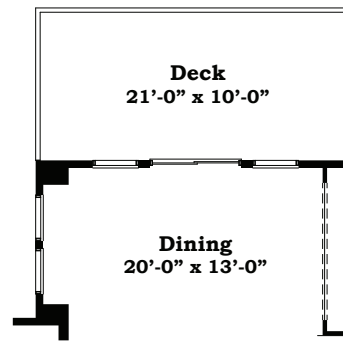
Renderings and floorplans are artist's conception. Room dimensions and square footage are approximate and may vary with construction. Landscaping shown is not included. The right is reserved to make changes without notice or obligation. Windows, doors and ceilings may vary based on options and elevations selected. Not all homes can be built on all homesites. Optional items are available at additional cost. The brochure is for illustrative purposes only and not part of a legal contract. Please see sales consultant for further details. © Norfolk Homes 2023.



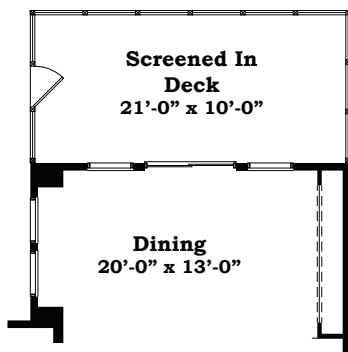
Approximate Sq.Ft. 2,978, 4 Bedrooms, 3.5 Baths,  
2 Car Garage



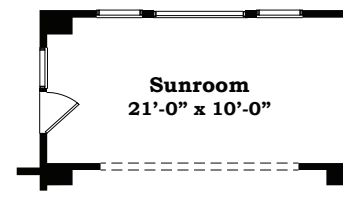
Opt. Concrete Patio



Opt. Deck

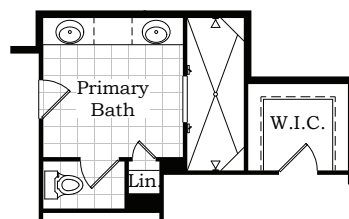


Opt. Screened In Deck

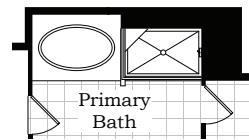


Opt. Sun Room

## First Floor Options



Opt. Grand Shower  
At Primary Bath



Opt. Primary Bath  
Tub

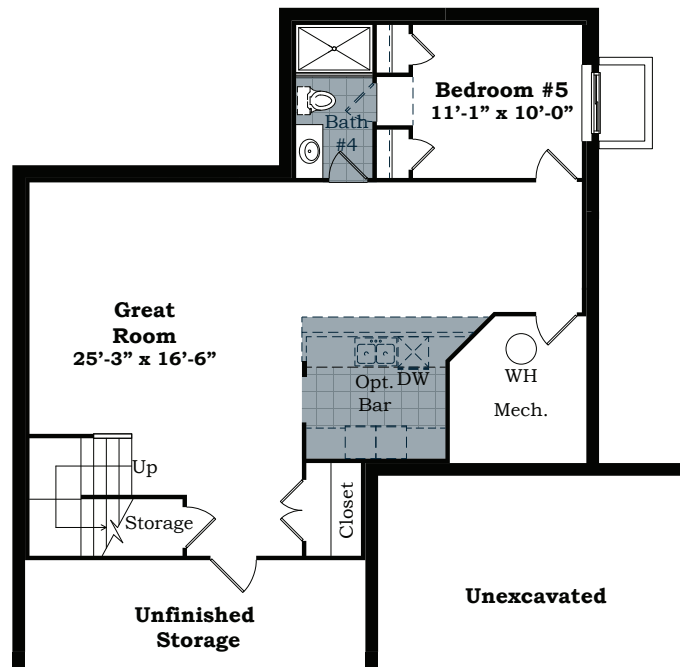
## Second Floor Options



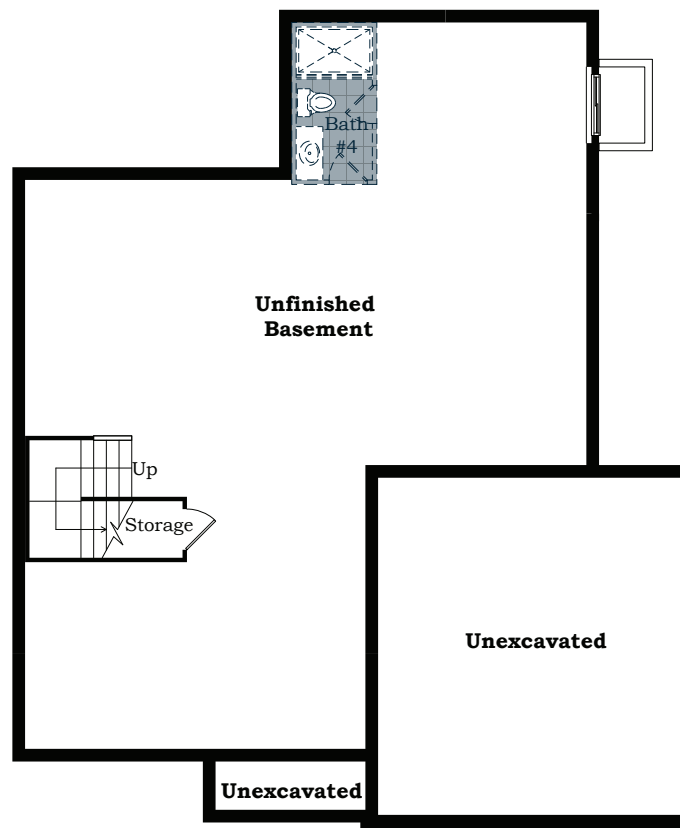
Norfolk  
HOMES  
www.norfolk-homes.com



Approximate Sq.Ft. 2,978, 4 Bedrooms, 3.5 Baths,  
2 Car Garage



Opt. Bedroom #5 w/ Bath #4



Basement



Norfolk  
HOMES  
www.norfolk-homes.com

