



STONE BRIDGE HOMES NW


Parkview
TERRACE

**BEDROOM
AND FULL
BATH ON
MAIN FLOOR**



**CORNER
HOMESITE!**

**3313 BUTTE DRIVE
HOMESITE 165
PLAN 310 FH**

ABOUT THE PROPERTY

Large bedroom and full bath on main with direct access and accessibility features! This home provides ample living space furnished with drop bevel white cabinetry, slab quartz countertops with undermount sinks, raised gas fireplace with floating box beam mantle, luxury vinyl plank flooring and Whirlpool stainless steel kitchen appliances. Includes 5-burner gas cooktop, wall oven and wall microwave, and stainless steel tub dishwasher. Upstairs you will find a spacious primary suite, all tile shower, garden tub, dual sink vanity, and a roomy walk-in closet plus 3 additional bedrooms and a large bonus loft. Covered Trex deck with gasline for future BBQ! Earth Advantage Certified!

FEATURES

- ✓ 5 BED / 3 BATHS
- ✓ 3090 SF HOME
- ✓ 2 CAR GARAGE
- ✓ 5TH BEDROOM ON MAIN
- ✓ BONUS LOFT
- ✓ CENTRAL AIR CONDITIONING
- ✓ FULLY FENCED & LANDSCAPED

RMLS# 657239006

\$799,900



**STONE BRIDGE
HOMES NW**



503.746-6215



GaryC@stonebridge-realty.com

MODEL HOME:

3245 BUTTE DRIVE

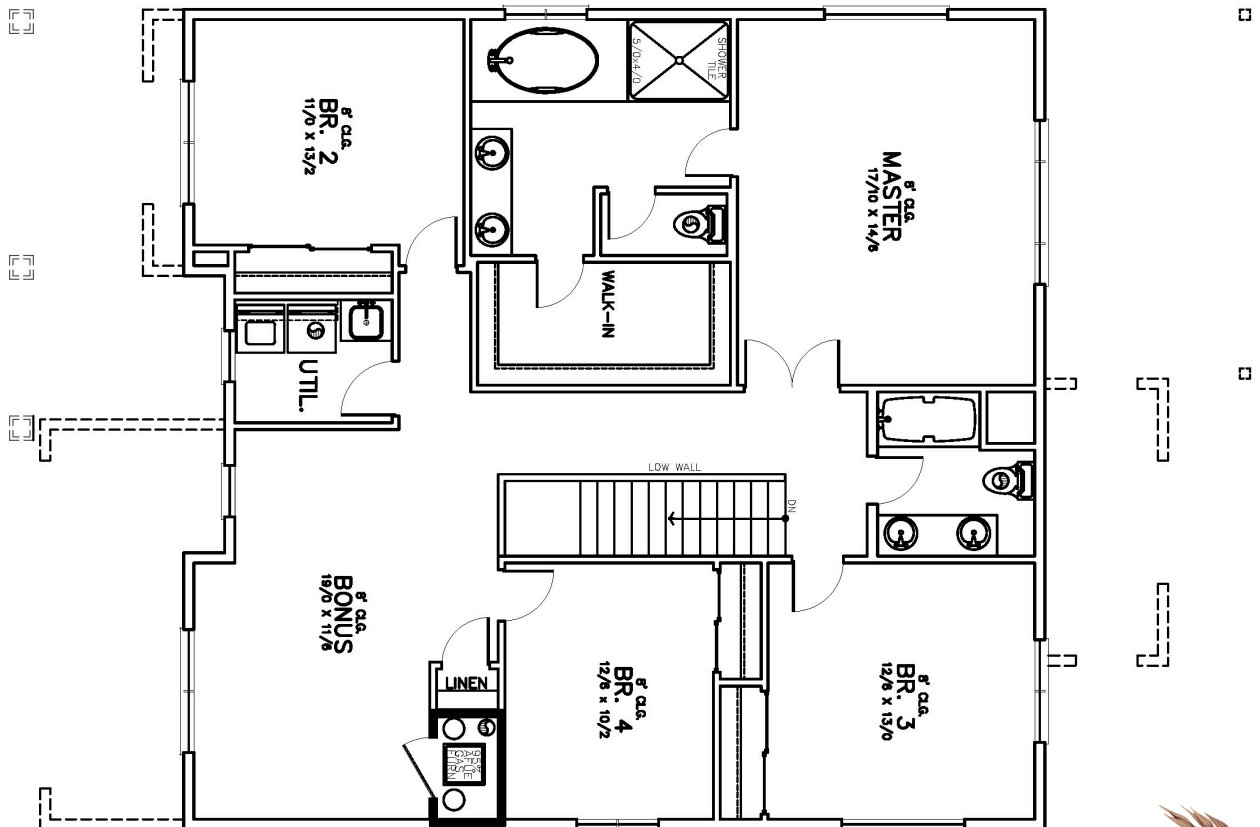
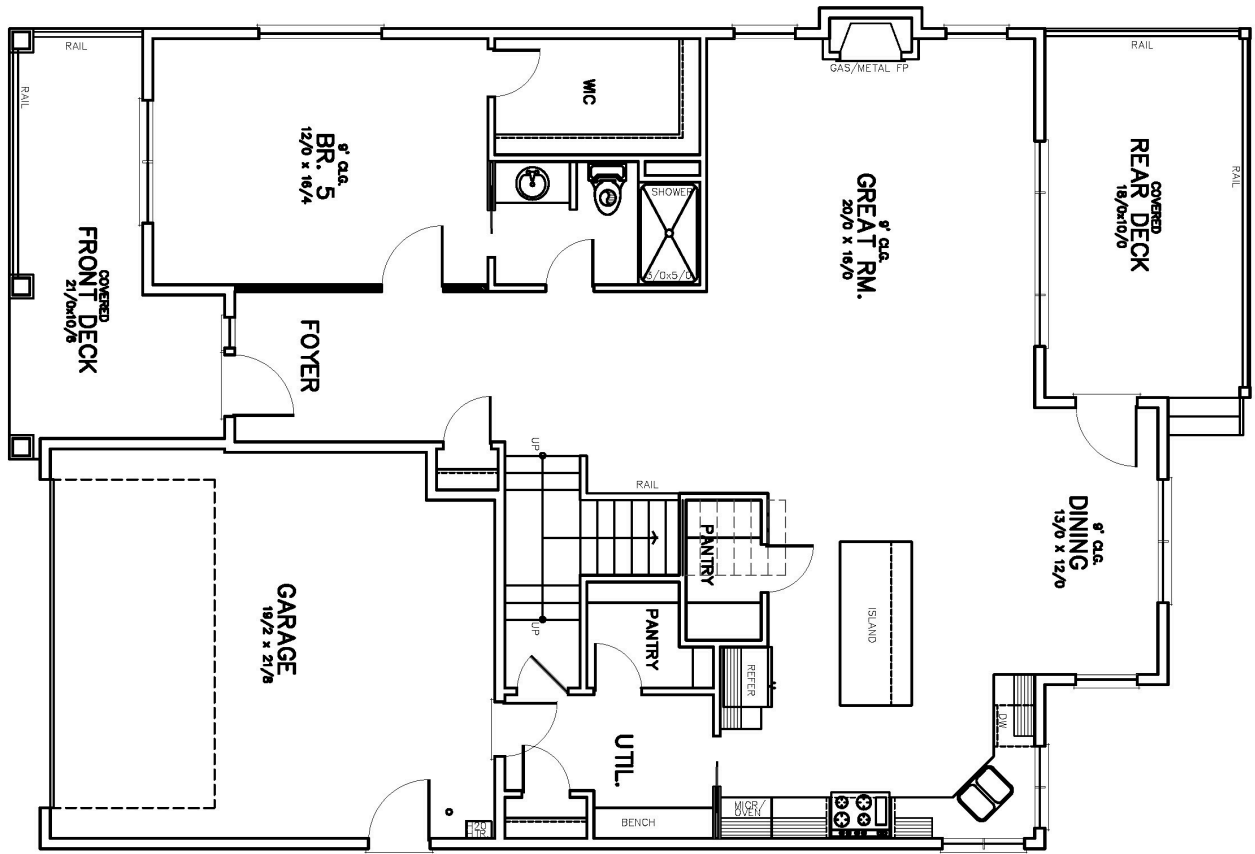
FOREST GROVE, OR 97116

Prices, features, and incentives are subject to change. Photos and drawings are for illustrative purposes only and actual details may vary. Please see a sales representative and the sale agreement for additional information. CCB#173318



HOMESITE 165

3313 BUTTE DRIVE
FOREST GROVE, OR 97116



Parkview
TERRACE