

**DABBERT**  
CUSTOM HOMES


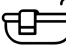





SCAN FOR  
**CURRENT PRICING**  
INCLUDES 2-STALL GARAGE



# THE *Somerset*

## PROPERTY FEATURES

- One and a half-story slab-on-grade
- Covered front door entry
- 9' ceilings
- Large pantry
- 3' wide doors on main floor
- 7' island
- Large owner's suite & closet
- Upper floor with bedroom, bathroom and extra living space
- Storage under stairs
- Optional lower floor
- Optional morning kitchen
- Insulated & sheetrocked garage with floor drain

 3 BDRM  3 BATH  2,339 SQFT

 2 CAR  40' WIDE

 3 CAR  49' WIDE



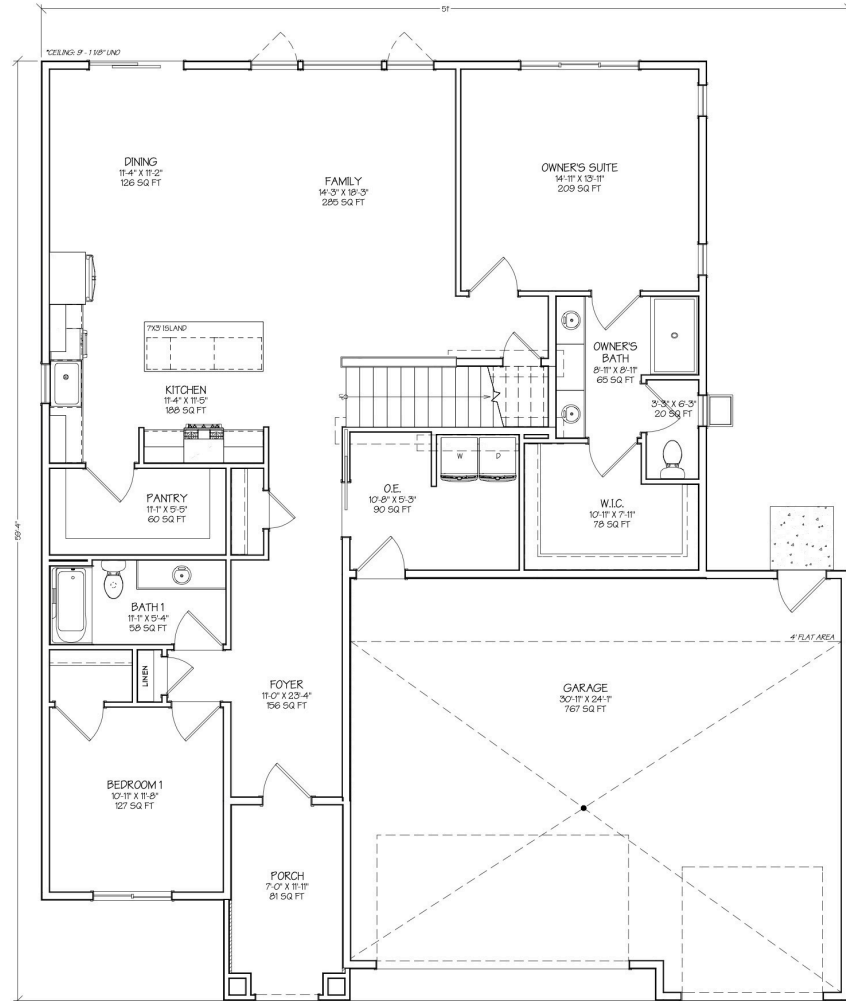
*Mike Gillund*

DABBERT CUSTOM HOMES  
REPRESENTATIVE

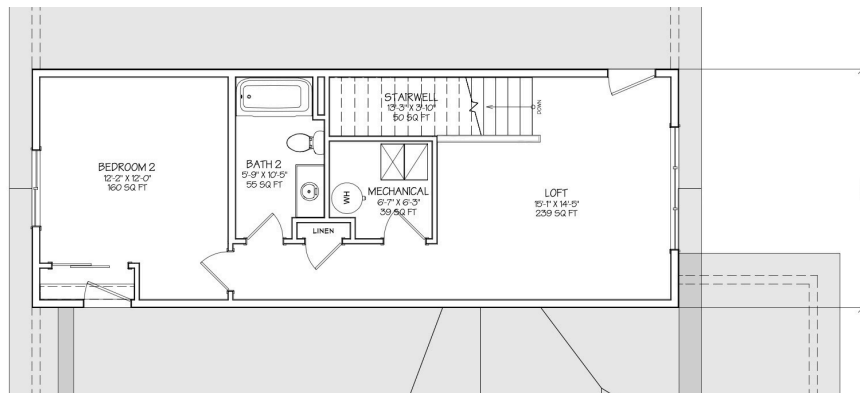
701-371-9163  
MIKE@DABBERTHOMES.COM  
DABBERTHOMES.COM

**B BEYOND**  
REALTY  
*Be Moved.*  
BEYONDDREALTYFM.COM

# THE SOMERSET



**Somerset 3.0 - Base Plan - Main Floor - 1,686 sq ft**



**Somerset 3.0 - Base Plan - Upper Floor - 653 sq ft**

THIS PLAN IS FEDERALLY COPYRIGHTED BY



©Dabbert Custom Homes. Plans are copyrighted and/or otherwise subject to intellectual property rights of Dabbert Custom Homes, LLC and/or others and cannot be reproduced or copied without Dabbert Custom Homes, LLC prior written consent.