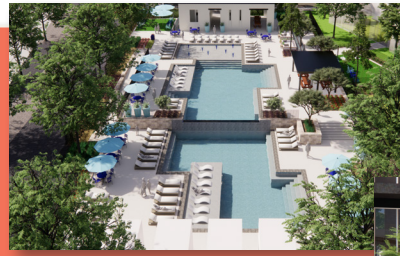




MAYFAIR



A New Side of New Braunfels. Mayfair is small-town America reimagined for a modern age. We are envisioning a place that is small-town connected. Small-town outdoorsy. Small-town proud. And effortlessly future forward. When a modern aesthetic and eco-friendly design are paired with a walkable human scale and a heaping side of nature, you get just the right balance.

Schools

Comal Independent School District https://www.comalisd.org/	830-221-2000
Mayfair Elementary 5912 Guthrie Trail, New Braunfels, TX 78130	830-837-7800
Canyon Middle School 2014 FM 1101, New Braunfels, TX 78130	830-221-2300
Canyon High School 1510 IH 35, New Braunfels, TX 78130	830-221-2400

Area Features

- Natural Bridge Caverns
- Schlitterbahn Water Park
- Gristmill River Restaurant & Bar
- Dry Comal Creek Winery
- Guadalupe River
- Texas State University
- Tanger Outlets San Marcos
- HEB & HEB Plus
- Natural Bridge Wildlife Ranch
- Landa Park
- Gruene Historical District
- Canyon Lake
- Lake Dunlap
- Lake McQueeney
- San Marcos Premium Outlets
- Buc-ee's

Utilities

Water/Electric/Sewer New Braunfels Utilities	830-629-8400
Telephone/Internet Centric Fiber	877-342-7270
Gas: Centric Unigas	281-252-6700
Waste Disposal: Hill Country Waste Solutions	830-885-5512
Post Office 651 N Business 1-35 #420, New Braunfels, 78130	830-625-7736

Homeowners Association

Estimated Dues: \$400/Annually
The Neighborhood Company, 830-264-2454

Tax Information

Total Estimated Tax Rate 2.38%

Preferred Lender – Southern Lending Services, LTD

Amy Jacobs, NMLS #339825
Residential Mortgage Loan Originator
737-406-8804 | NMLS #342900
ajacobs@southernlendingservices.com

Community Highlights

- 35+ miles of trails connecting homes, businesses, schools and parks
- Dedicated off-street bike loop
- Open-air events pavilion
- Private pocket parks
- Over 300 acres of public parks
- Private swimming pool and pool house
- Midtown Mayfair Recreation & Retail district (first phase planned for 2026)
- Comal ISD Schools: New Onsite Elementary
- Comal ISD Schools: Middle School Planned Fall 2027

Sales Associates

Kevin Scawthorn
512-565-6504 cell
kscawthorn@sfhtx.com

Chris Ingraham
503-784-1969 cell
cingraham@sfhtx.com

Model Homes

The Arbor Collection
149 Radnor Road
New Braunfels, TX 78130
512-308-6333

The Woodland Collection
147 Trifle Trail
New Braunfels, TX 78130
512-358-1252

Directions

From I-35 Northbound (Exit 194)

- Take Exit 194 and turn right onto Ransom Drive.
- Continue to the roundabout and take second exit onto Guthrie Trl.
- Turn left onto Radnor Road.
- The model homes are located at the corner of Radnor Road and Edna Drive.

From I-35 Southbound (Exit 193)

- Take Exit 193 for Kohlenberg Road. Turn right onto Ransom Drive.
- Continue to the roundabout and take second exit onto Guthrie Trl.
- Turn left onto Radnor Road.
- The model homes are located at the corner of Radnor Road and Edna Drive.



SCOTT FELDER HOMES

www.ScottFelderHomes.com



All information provided here is from sources deemed reliable. However, the builder assumes no responsibility or warranty for the presented information including any errors, changes, omissions, or other conditions due to unforeseen or changing circumstances.