

The Melrose

BY TODD HOMES LLC

TODD
Homes
llc.com
Affordable Luxury



Explore This Home



Visit Todd Homes LLC

THE MELROSE FEATURES:

- Custom, Modern Craftsman at 2398+ SF with 3/4 BR & 2.5/3.5 BA
- An Open-Concept Plan Fosters Connectivity Throughout the Living Spaces - Kitchen, Great Room and Open Dining Flow Together
- Private Primary Suite has a Walk-In Closet & Adjoining Spa-Like Bath with a Walk-In Shower, Quartz Topped Vanity & Dual Sinks
- Expansive Great Room Flows Easily Into the Kitchen and Walks Out to a Large, Covered Deck for Outdoor Enjoyment
- First Floor Home Office
- A Versatile 2nd Floor Loft
- Spacious, Upscale Kitchen With Granite Countertops, Island, Soft Close Shaker Cabinetry & Stainless Steel Appliances
- Beautiful LVT Flooring In All Shared Living Spaces
- Lower Level With Full Bath Rough-In & Optional Egress For Future Living Spaces
- Optional Finished, Walkout Lower Level with Full Bath, Bedroom, Recreation Room & Media Room



3 or 4

Bedrooms



2.5 or 3.5

Bathrooms



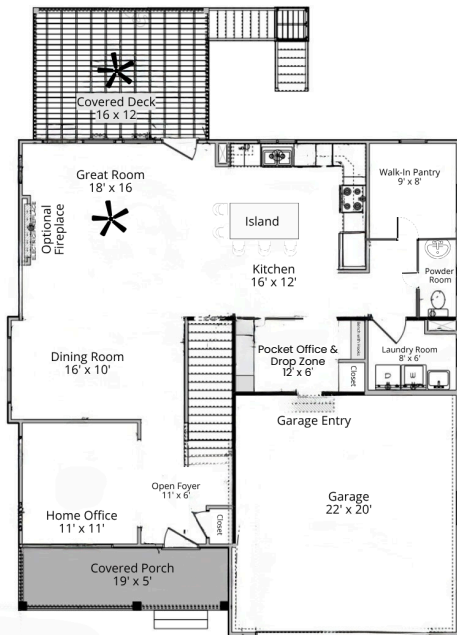
2 Car

Garage

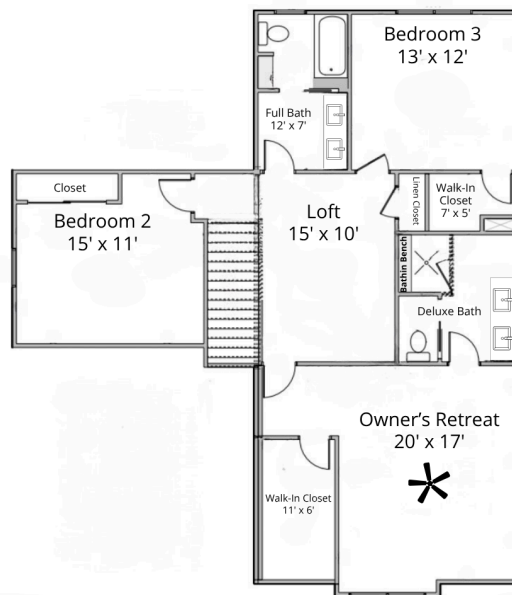


2398 - 3350

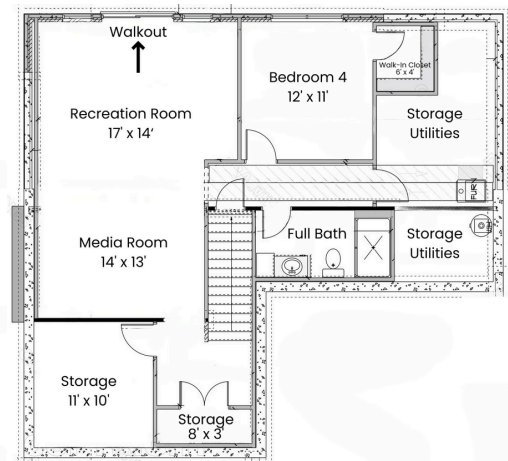
Square Feet



First Floor



Second Floor



Optional Finished
Lower Level

Copyright 2025 Todd Homes LLC. All rights reserved. Please be aware that, in line with our dedication to ongoing product enhancement, we reserve the right to alter our homes' pricing, availability, features, choice of product brands, dimensions, architectural details and design specifications. This brochure serves solely for illustrative purposes and does not form any part of a legally binding contract. Plans and photos/renderings may include optional items and/or upgrades. Room sizes & dimensions are approximate and not guaranteed.