

THE NEWPORT II



PROPERTY FEATURES



4-5 BDRM



4.5 BATH



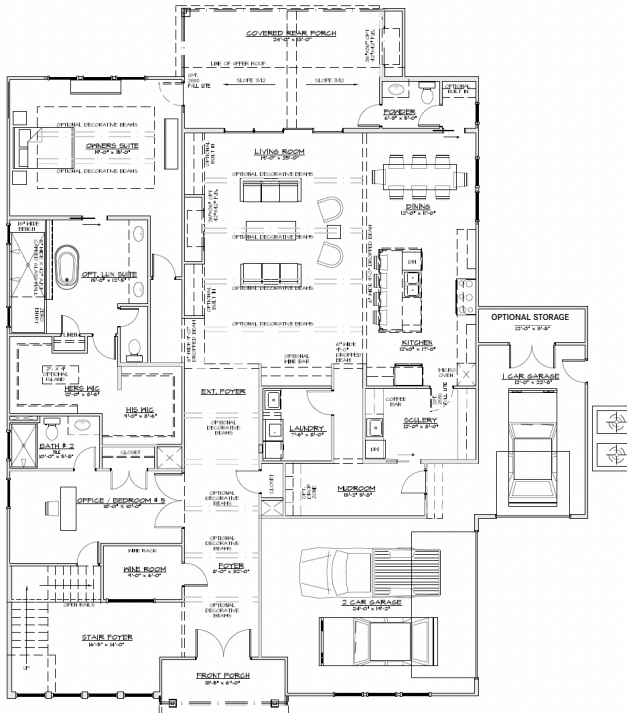
4554 SQFT

Meet The Newport II Crawl

Step into elegance through a 2-Story Stair Tower Foyer that sets a majestic tone from the moment of entry. The ground level spans 2,845 sqft, featuring expansive living spaces that flow seamlessly from one room to the next. A state-of-the-art LUXE Kitchen equipped with high-end appliances, ample counter space, and custom cabinetry, complemented by an OPTIONAL Scullery for additional prep and storage. Entertain guests in style with an adjacent Wine Room, perfect for showcasing your collection and hosting tastings.

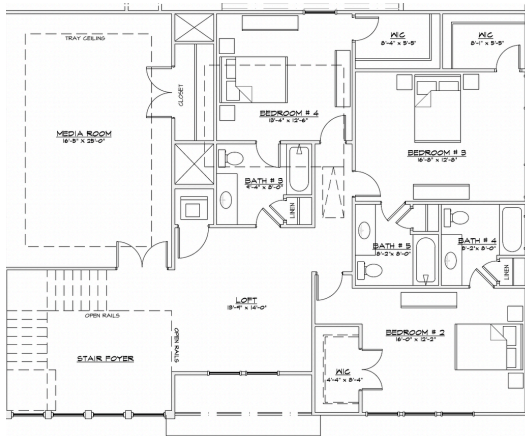
3-car garage with dedicated spaces for two and one-car setups, providing a total of 714 sqft of unheated space for vehicles and storage. Accommodation and Flexibility Choose between 4 to 5 spacious bedrooms, including an optional Home Office or Bedroom #2 on the Main floor, ensuring flexibility to meet your lifestyle needs. Luxurious bathrooms, each designed with premium fixtures and finishes, provide private retreats within the home.

Experience the outdoors with an expansive Covered Porch and additional Outdoor Living space totaling 300 sqft, ideal for year-round entertainment and relaxation. Enjoy the privacy and beauty of your surroundings, making the most of the indoor-outdoor living design. A charming Porch covering 75 sqft, perfect for quiet mornings and serene evenings. This home is more than just a place to live—it's a sanctuary crafted to offer a lifestyle of luxury and peace. With every detail finely tuned to perfection, from the architecture to the finishes.



MAIN FLOOR FEATURES

- **Elegant Entry:** Impressive foyer designed to provide a luxurious welcome.
- **LUXE Kitchen w/ Optional Scullery :** Equipped with top-of-the-line appliances, extensive countertops, and sophisticated cabinetry.
- **Optional Scullery:** Additional space for storage and meal preparation, enhancing kitchen functionality.
- **Formal Dining Room:** Perfect for hosting dinners and special occasions.
- **Study/Home Office/Guest Suite:** Ideal for work, study, or guests providing a quiet and secluded environment. Conveniently located on the main floor, offering privacy and comfort for visitors.
- **Primary Suite with tray ceiling and luxury bath** with enormous dual-head tiled shower and floating soaker tub.
- **Outdoor Living:** Expansive Covered Porch, perfect for outdoor entertainment and relaxation.
- **Total Space:** Approximately 2,800 sqft of beautifully designed living space.



SECONDARY FLOOR FEATURES

- **Luxurious Bedrooms:** Three to four bedrooms, each offering ample space and privacy.
- **2-Story Stair Tower Overlook**
- **Children's Play Area/Loft:** A versatile space that can be used for play, entertainment, or relaxation.
- **2nd Laundry Room:** Conveniently located on the same floor as the bedrooms.
- **Total Space:** Approximately 1,500 sqft, designed for comfort and family living.

Images, visuals, and details such as features, colors, and sizes are for illustrative purposes and may differ from actual homes as constructed. *All information about homes and communities, including but not limited to prices, included features, terms, availability, and amenities, is subject to change and may be sold at any time without prior notice or obligation. **Square footage measurements are approximate. Projected completion dates are estimates and subject to variation. All homes constructed by Grand Living Homes, LLC DBA. NC GC License #RBC817



LISTED BY
ROGER BERREY
SoldwithRoger@gmail.com
704-533-3180



CO LISTED BY
MELANIE ADAMS
madams@grandlivinghomes.com
(864) 363-1465