

# The Glenwood Craftsman

## Ready Home for Sale




Driveway & Landscaping not included.  
Not actual home, but similar plan.

**\$839,900\***

### Immediate Occupancy

Cedar Ridge (Lot 8)  
4957 113th Street  
Pleasant Prairie, WI 53158

-  4 Bedrooms
-  3.5 Bathrooms
-  2,800 SF
-  3 Car Garage

### Directions:

I-94 to 104th Street/Hwy 165. East on 104th Street/  
Hwy 165. At the Roundabout, take the 1st exit onto  
Springbrook Rd. Turn left onto 47th Ave. Right onto  
113th Street into the neighborhood.

\*Price subject to change without notice.



### KITCHEN FEATURES

- Designer Kitchen with painted cabinets with crown molding, soft close doors/drawers & roll trays
- Quartz countertops, tile backsplash, island w/ painted cabinets & flush snack bar
- Butler's pantry w/ quartz countertop
- GE® kitchen appliance package w/built-in microwave, dishwasher, slide-in gas range, chimney style hood & built-in look French door refrigerator in slate finish

### MAIN LEVEL FEATURES

- 16'x12' sunroom w/ large transom windows
- Luxury vinyl plank flooring in foyer, office, great room, kitchen, nook, sunroom, butler's pantry, laundry, mudroom, powder room, bath 3, and bath 2
- Gas fireplace w/ stacked stone surround & boxed mantel w/ returns
- Double swing glass doors in office
- Separate laundry & mudroom
- Built-in lockers in drop zone
- Laundry room w/ GE washer & dryer, cabinets & folding table
- 2' side bump at laundry/mudroom

### MASTER SUITE FEATURES

- Box up ceiling & large walk-in closet w/ melamine shelving
- Double bowl vanity w/ added drawer storage in between
- 3.5'x6' tiled shower w/frameless glass door, wall to wall tiled niche, & tiled bench
- Tile flooring
- Separate commode room

### ADDITIONAL FEATURES

- Jack & Jill bathroom between bedroom 2 & 3
- Princess suite w/ separate bathroom
- 4 1/4" base & 3 1/4" casing
- Insulated overhead garage door & belt-driven ultra quiet garage door opener
- Solid core doors
- Basement bathroom plumbing rough in
- Egress windows
- 9' foundation
- Pella® windows
- Dura Supreme® Cabinets
- Moen® Faucets & Kohler® Toilets
- Maxim® Light Fixtures
- Smooth drywall finish
- 2x6 Construction
- Focus on Energy Certified
- Builder Warranty Included

Floor Plan on Other Side →

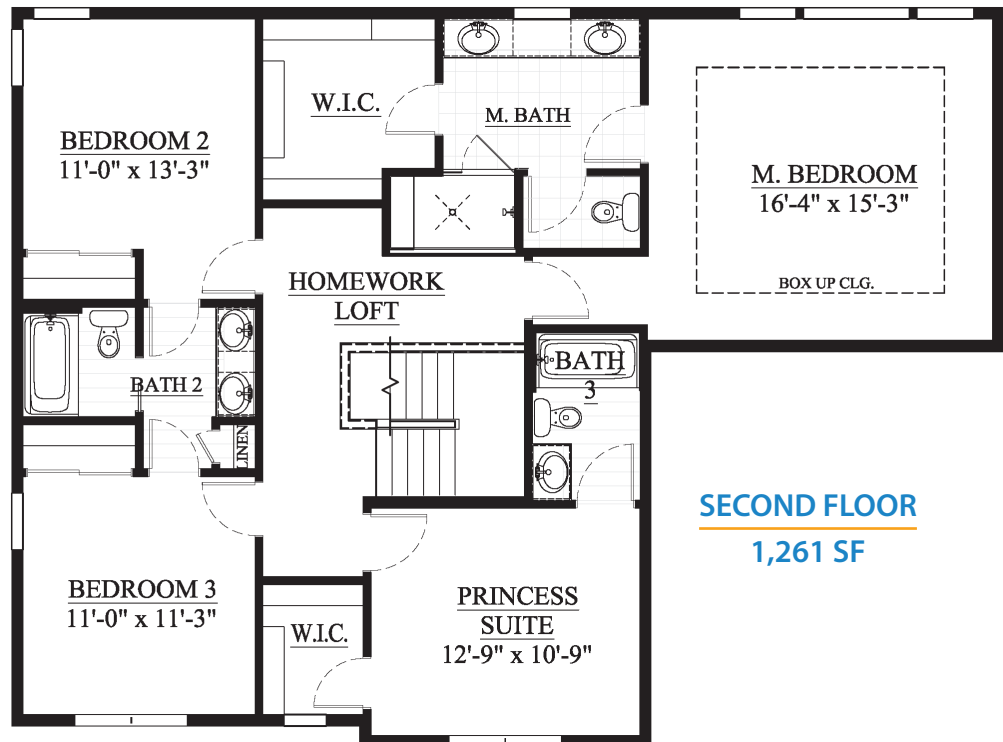
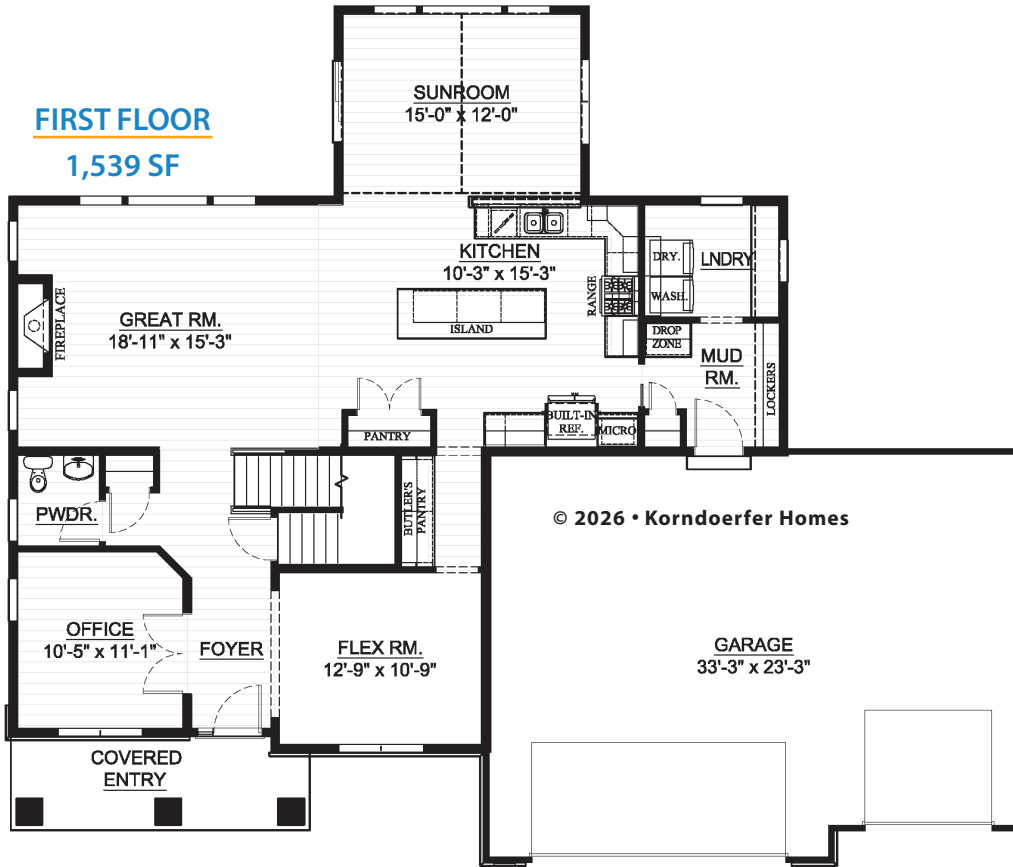


### ASK RYAN!

Online Sales Consultant  
262-884-9551  
sales@korndoerferhomes.com



# The Glenwood Craftsman Floor Plan



**ASK RYAN!**

Online Sales Consultant  
262-884-9551  
sales@korndorferhomes.com

