

# The Norwood Traditional

## Ready Home for Sale

**\$2,000 Closing Credit\*\*  
Through April**



Driveway & landscaping not included.  
Not actual home, but similar plan.

**\$699,900\***

**Immediate Occupancy**

Settlement at Hoods Creek (Lot 98)  
2402 Hoods Creek Path  
Mount Pleasant, WI 53406

- 4 Bedrooms
- 2.5 Bathrooms
- 2,372 SF
- 3 Car Garage (extended depth)

### Directions:

I-94 exit Hwy C/Spring Street. East on Hwy C/Spring Street. Left on Airline Road. Left on Gittings Road. Right on Settlement Trail into neighborhood.

\*Price subject to change without notice.



## KITCHEN FEATURES

Designer Kitchen featuring stained cabinetry with crown molding, soft close doors/drawers & convenient roll-out trays in island

Quartz countertops, tile backsplash, island w/ flush snack bar

GE® Designer kitchen appliance package w/built-in microwave, dishwasher, slide-in gas range, chimney style hood & built-in look French door refrigerator in slate finish

## MAIN LEVEL FEATURES

16'x12' sunroom

Transom windows in great room

Select jamb & cased windows

Luxury vinyl plank flooring in foyer, kitchen, nook, sunroom, office, great room, powder room, laundry/mudroom, & bath 2

Gas fireplace w/ stacked stone surround & boxed mantel w/ returns

Double swing glass doors in office

Separate laundry & mudroom

Built-in lockers in mudroom

Laundry room w/ cabinets & folding table

4 ¼" base & 3 ½" casing

## MASTER SUITE FEATURES

Two large walk-in closets w/ melamine shelving

Double bowl vanity

4'x5' tiled shower w/frameless glass door, wall to wall tiled shampoo shelf, & tiled bench

Tile flooring

Separate commode room

## ADDITIONAL FEATURES

Walk-in closets in bedroom 2 & 3

James Hardie® fibercement lap siding, trim, & corner boards & additional stone to front elevation

Extended 3 car garage

Insulated overhead garage doors & belt-driven ultra quiet garage door opener

Solid core doors

Basement bathroom plumbing rough in

Egress windows

Pella® windows

Dura Supreme® Cabinets

Moen® Faucets & Kohler® Toilets

Maxim® Light Fixtures

2x6 Construction

Focus on Energy Certified

Builder Warranty Included

[Floor Plan on Other Side](#) →



### ASK RYAN!

Online Sales Consultant  
262-884-9551  
[sales@korndoerferhomes.com](mailto:sales@korndoerferhomes.com)



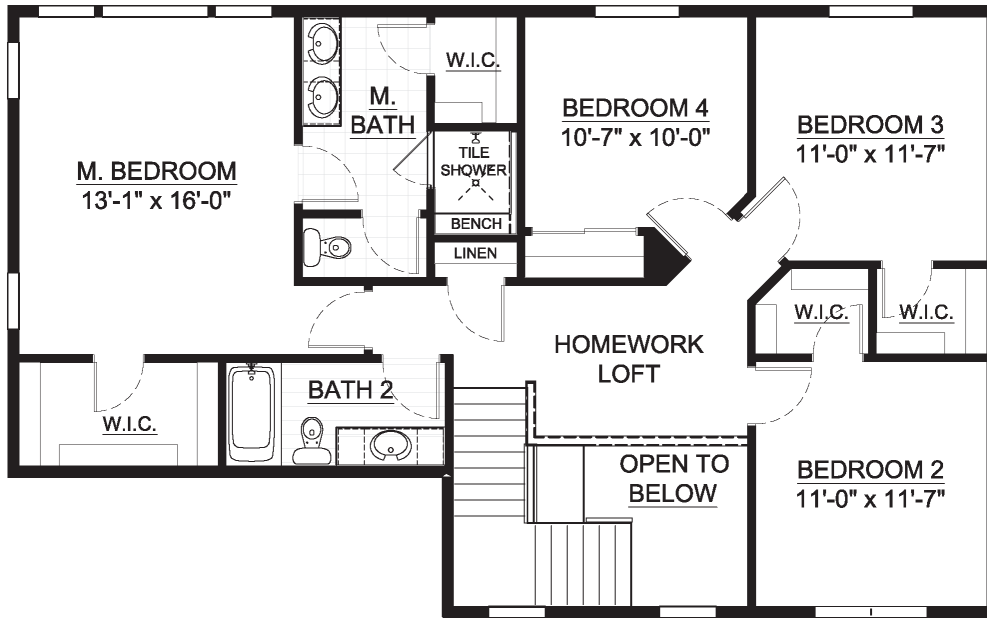
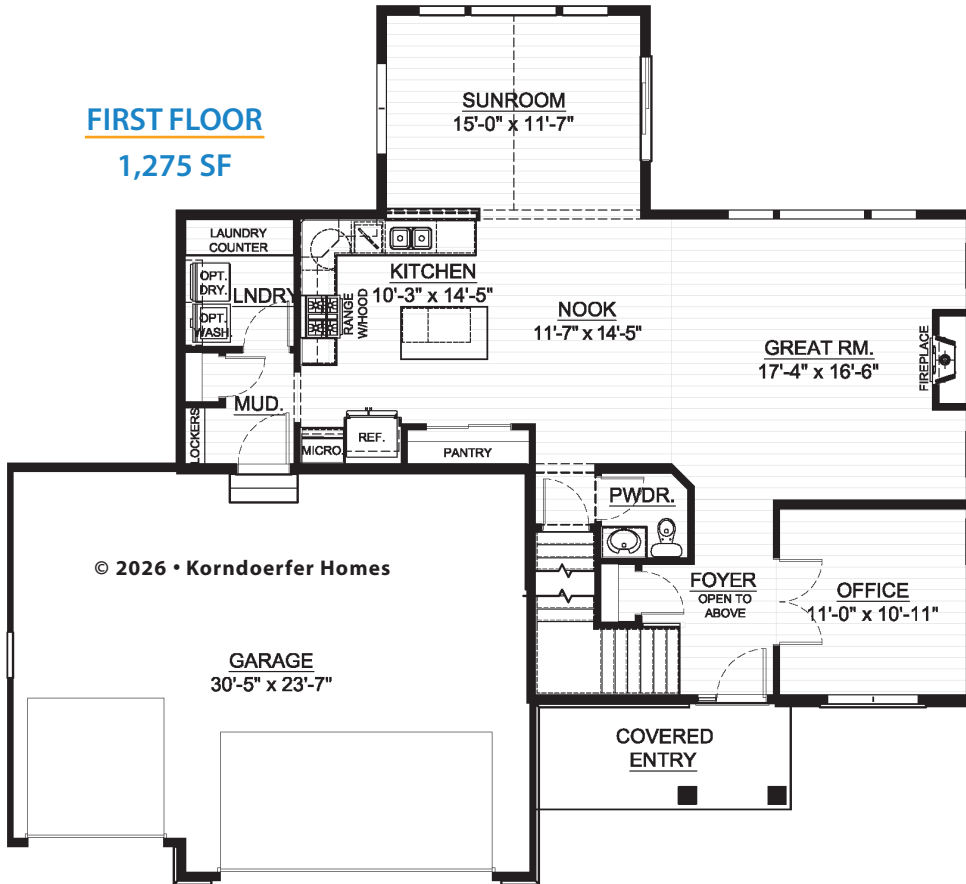
\*\*Offer applies only to 2402 Hoods Creek Path and is not interchangeable or transferable. Incentives have no cash value, may not be used toward down payment, and may not be combined with other offers unless expressly stated. Offers, pricing, terms, and availability are subject to change or withdrawal at any time without notice. See a Korndoerfer Homes New Home Consultant for full details.



# The Norwood Traditional Floor Plan

## FIRST FLOOR

1,275 SF



## SECOND FLOOR

1,097 SF



### ASK RYAN!

Online Sales Consultant  
262-884-9551  
sales@korndorferhomes.com

KORNDORFER  
HOMES  
KORNDORFERHOMES.COM

