

# Fairfield Expanded



Farmhouse



Craftsman



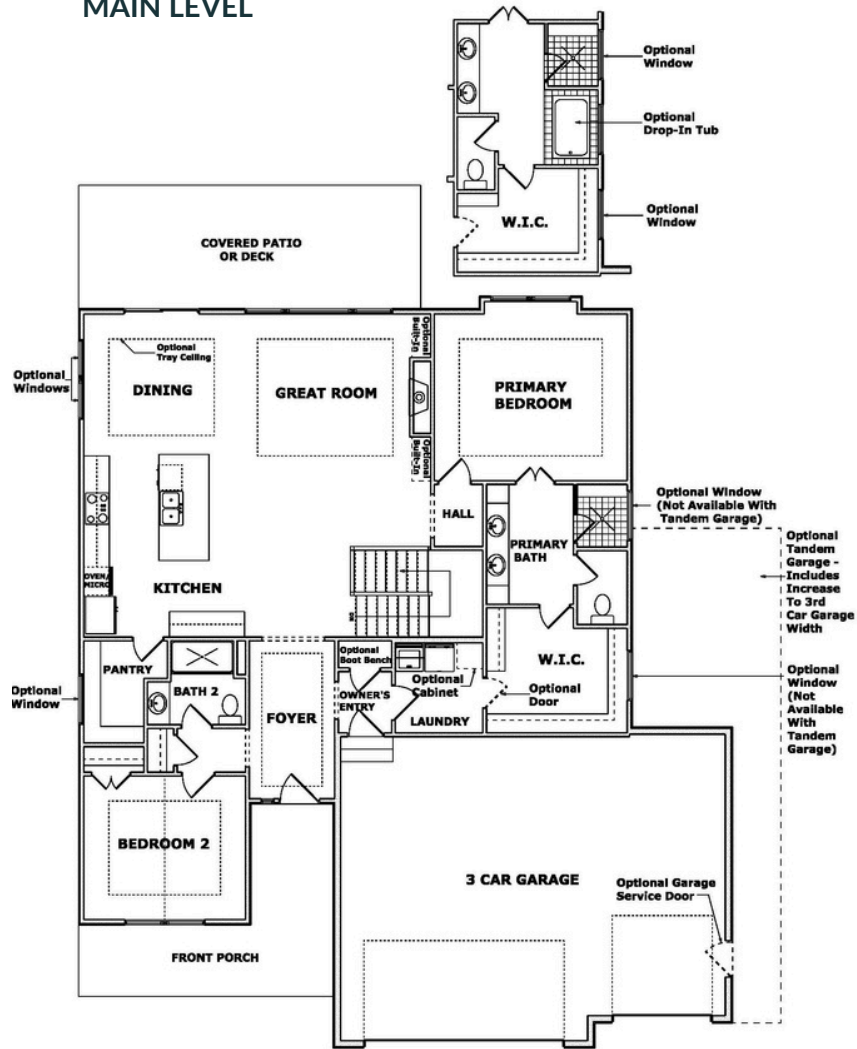
Modern Farmhouse



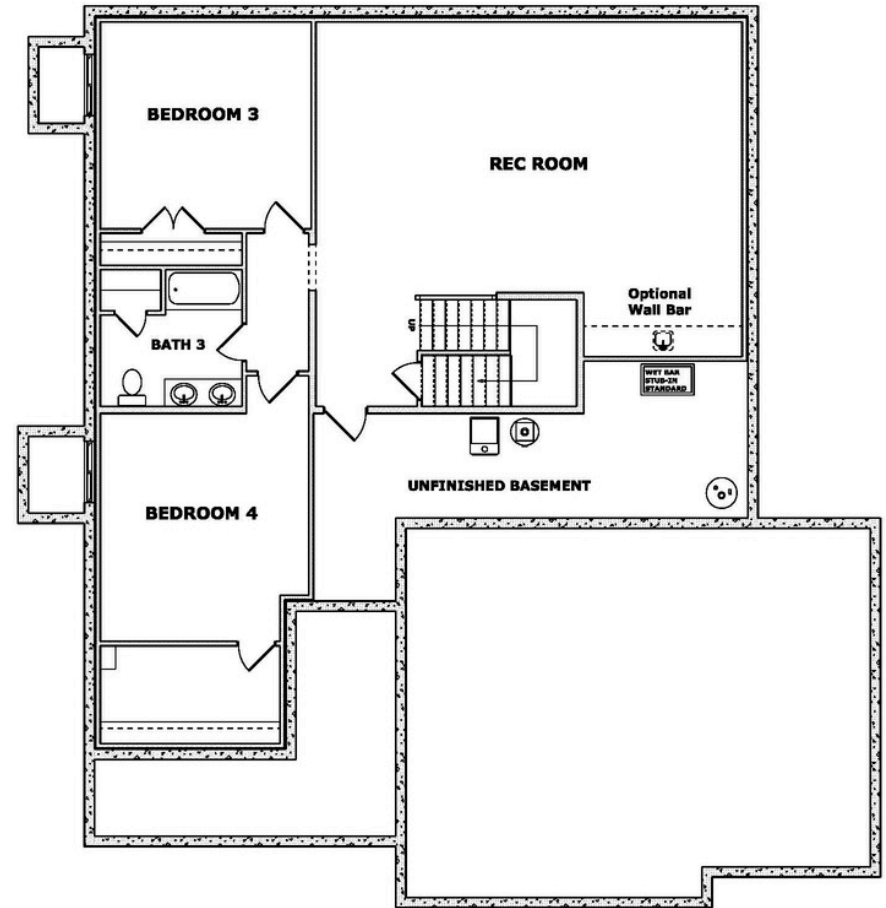
Cape Cod

# Fairfield Expanded

## MAIN LEVEL



## LOWER LEVEL



# Fairfield Expanded

## SIGNATURE FAIRFIELD EXPANDED FEATURES

- Optional expanded tandem garage (additional cost)
- Tray ceiling in Foyer and Great Room
- Tower storage in Primary bath
- Oversized walk-in closet in bedroom 4
- Paint grade boot bench
- Oversized covered patio/deck (walkout and daylight lots)

*Standard Included Features:*

## STRUCTURAL and EXTERIOR

- 10' ceilings on main floor
- 9' foundation walls
- Soffit lighting
- Tray ceiling in primary bedroom
- 8' non insulated garage doors
- Wifi Garage openers for (2) doors and (1) keypad
- Covered patio with exterior fan & light
- Irrigation system
- Landscape standard package
- 30 Yr. composite roof

## CABINETS and COUNTERTOPS

- Custom beech cabinets with hidden hinges, and soft close doors and drawers
- Granite/quartz tops for all solid surfaces throughout home
- Undermount stainless steel sink in Kitchen
- Adjustable shelving in kitchen and pull-out trash can
- Walk-in pantry
- Upper laundry cabinet with shelf and pole

## FIREPLACE, TRIM, & MIRRORS

- Direct vent gas fireplace with 3-piece standard craftsman mantel and tile surround
- Gas fireplace with blower and battery back-up (size is plan specific)
- Trim wrapped mirror in primary bathroom and bath 2
- Stained handrail and balusters with iron spindles
- Brushed nickel doorknobs and hinges
- Long front door handle (black)

## FLOORING and TILE

- Premium laminate flooring in foyer, great room, kitchen, pantry, dining area, owner's entry and laundry
- Tile flooring in primary bathroom and secondary bathrooms
- Carpet in all bedrooms, stairs with 8lb pad
- Wall Tile on kitchen backsplash, primary bathroom shower, and bath 2 shower

## APPLIANCES

- GE stainless steel appliance package: dishwasher, gas cooktop, wall oven, hood insert, and microwave with trim kit.

## ENERGY EFFICIENCY and MORE

- 95% high efficiency gas furnace
- 13.4 SEER2 air conditioner
- Programmable thermostat
- Whole house humidifier
- Pella vinyl low-E thermal windows
- Passive radon system (fan kit not included)
- Sump pump

## ELECTRICAL and LOW VOLTAGE

- 200 AMP panel
- LED light bulbs in all recessed lighting
- 3 CAT6 Data: great room, primary bedroom, lower-level rec room
- Pre-Wired for ceiling fan in great room and bedrooms
- Under cabinet lights in kitchen

## PLUMBING and FIXTURES

- 50 gallon electric water heater
- Lower-level wet bar stub
- Brushed nickel plumbing package through out home
- Gas lines at cooktop and great room fireplace
- Ice maker line for kitchen fridge

## PAINT

- Interior: 1 flat wall color, 1 trim color, and 1 stain color
- Exterior: 1 body color, 1 trim color, and 1 accent color

*\* white, light, or ultra dark colors may incur additional charges*

*\* trim color only applies to front elevation unless community requires 4 sided painted trim*

### STANDARD ALLOWANCES

Lighting: \$2,800

Tile: Standard (Level 1)

Flooring: Standard (Level 1)



*\*\*Standard Features are subject to change without notice and could vary by floor plan, lot, and community.*